



DAMEN DOUBLE HULL OIL TANKER® 8000

"KING FISHER"

GENERAL

YARD NUMBER	9393
DELIVERY DATE	June 2013
BASIC FUNCTIONS	Double Hull Oil Tanker with coated tanks
CLASSIFICATION	LRs ✕ 100 A1, Double Hull Oil Tanker, ESP, ✕ LMC, UMS, IP, LI, SCM, NAV1, spec gr. 1,025 t/m ³ , settings PV +14kPa/ - 3.5 kPa, IMO II
IMO NO.	9556038

DIMENSIONS

LENGTH O.A.	104.52	m
LENGTH B.P.P.	99.92	m
BEAM MLD.	17.00	m
DEPTH	9.50	m
BALLAST DRAFT	3.80	m
SUMMERDRAFT	6.30	m
DEADWEIGHT	7,072	ton
GROSS TONNAGE	4,631	ton

CAPACITIES

CARGO TANK CAPACITY	8,363	m ³
HFO (IFO 380)	258	m ³
MDO (DMB)	43	m ³
LUB.OIL	21	m ³
POTABLE WATER	17	m ³
BALLAST WATER	3,330	m ³
2 SLOP TANKS	172	m ³

PERFORMANCES

Trial speed at summer draft with 90% M.C.R. 12.3 knots

PROPULSION SYSTEM

MAIN ENGINE	MAK, type 8M25C
OUTPUT	2,640 kW at 750 rpm
PROPELLER	CPP, 3,850 mm
BOW THRUSTER	FPP, 400 kW electric motor

NAUTICAL AND COMMUNICATION EQUIPMENT

Radio equipment is according to GMDSS for area A2

AUXILIARY EQUIPMENT

- 2 Diesel generator sets, 525 kVA-420 kW/60Hz
- 1 Emergency generator set, 80 kVA-64 kW/60 Hz
- 1 Shaft generator 435 kVA/60Hz, PTI mode 400 kW
- 1 Thermal oil boiler for HFO tank heating and cargotank cleaning 1,500 kW
- 1 Economiser
- 3 Purifier units for LO/HFO/MDO
- 1 Booster unit
- 1 Sewage treatment plant
- 2 Starting air compressors
- 1 Bilge water separator, acc. to Marpol regulations - 2009
- 1 CO2 and water mist fire fighting system for engine room
- 2 Ballast pumps in the cargo area each 400 m³/h
- 2 General service pumps each 150 m³/h
- 1 Emergency fire fighting pump 50 m³/h
- 1 Freshwater generator 20 t/day

CARGO DECK LAY-OUT AND EQUIPMENT

- 10 Epoxy coated cargo tanks with fixed tank cleaning system, total volume of 8,363 m³.
- 1 Manifold at midship with 3 cross-overs for loading /discharging 3 grades simultaneously, 1 manifold with 2 grades forward
- 1 Vapour return system
- 5 Segregations
- 10 Electric driven deepwell pumps each 200 m³/h at 110 mwc./sg 1
- 1 Hose handling crane cap 1.5 tonnes at 16 m
- 1 Purge air compressor
- 2 Gas freeing fans, 3,000 m³/hr
- 1 Loading computer
- Cargo deck area protected by foam system
- Hydraulic controlled cargo and ballast valves from the Cargo Control Room

DECK LAY-OUT AND EQUIPMENT

- 2 Electric-hydraulic driven bow anchor winches.
- 4 Electric-hydraulic driven mooring winches (2 fore, 2 aft)
- 1 Free fall life boat for 12 persons
- 1 MOB boat with davit

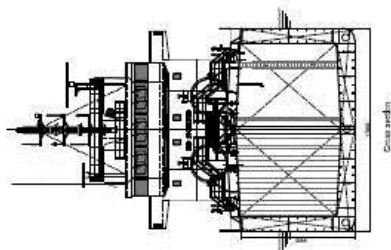
ACCOMMODATION

For captain and crew for a total of 10 persons and 1 guest, all single cabins with sanitary

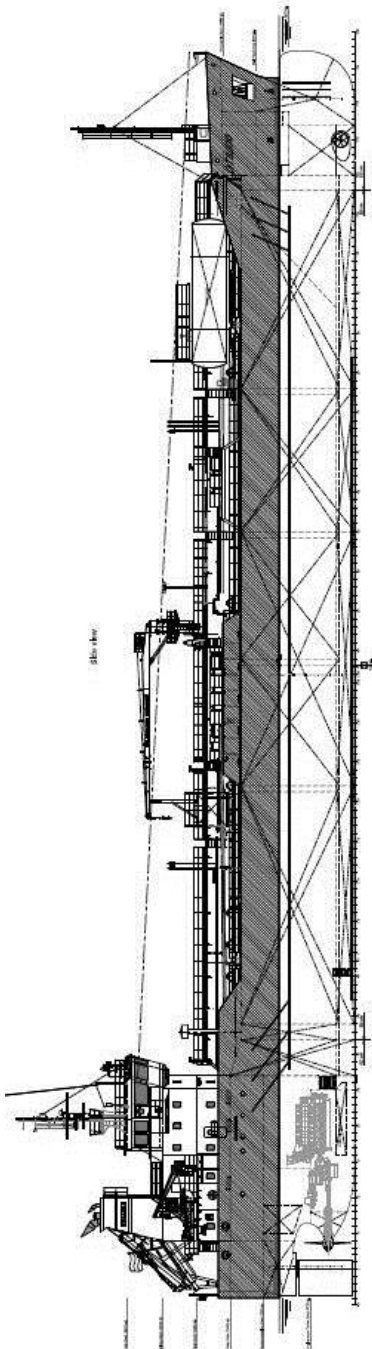
MANAGING OWNER

Overall Management MT Ouse BV
Comm. Management James Fisher Everard Ltd., United Kingdom

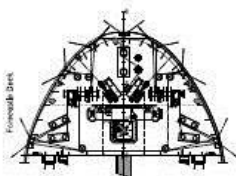
DAMEN



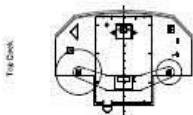
Cross section



Side view



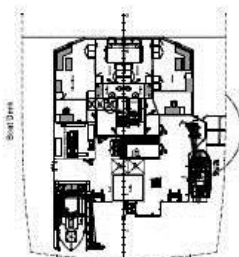
Forepeak Deck



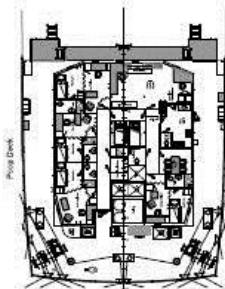
Top Deck



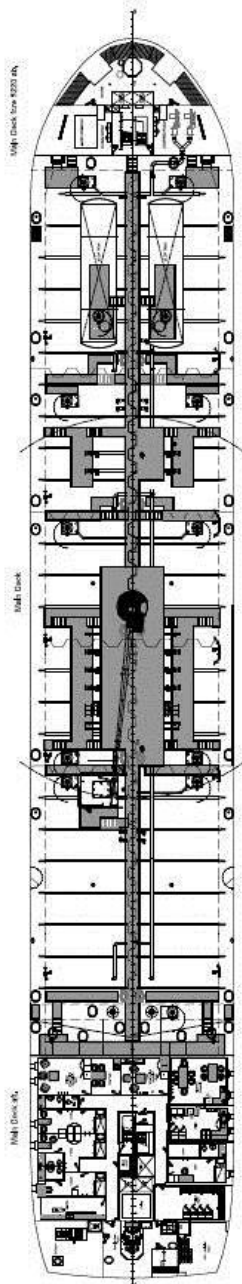
Ship Deck



Bottom Deck



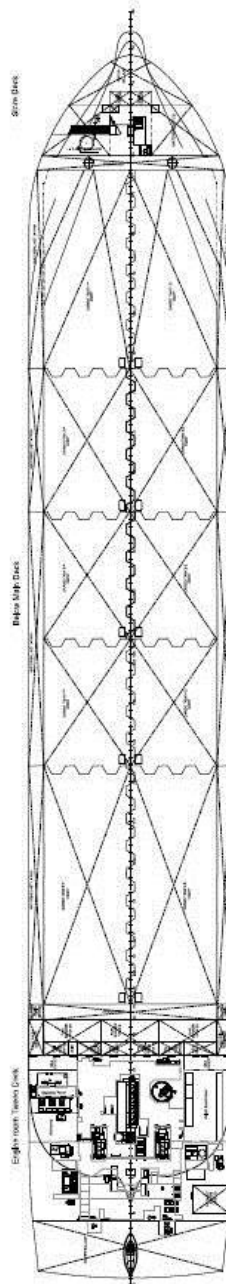
Prop Deck



Upper Deck (see 9232 RH)

Mid Deck

Mid Deck (S)



Stow Deck

Upper Stow Deck

Engine Room, Turbine Deck

DAMEN DOUBLE HULL OIL TANKER[®] 8000

"KING FISHER"

DAMEN

DAMEN SHIPYARDS BERGUM

Member of the DAMEN SHIPYARDS GROUP



Damsingel 4 (Industrieterrein Zuid)
9262 NC Sumar
The Netherlands

P.O. Box 7
9250 AA Bergum

phone +31 (0)511 46 72 22
fax +31 (0)511 46 42 59

info@damen-bergum.nl
www.damen-bergum.nl