



DAMEN CONTAINER FEEDER 800 STANDARD

GENERAL

Basic functions	Transport of containers in the hold(s) and on top of the hydraulic folding type hatches
Classification	DNV GL ✱ 100 A5 FS Ice class 1A, Containership, ✱ MC E3, AUT, equipped for dangerous goods according to SOLAS reg. 19 II-2

DIMENSIONS

Length o.a.	140,64	m
Length b.p.p.	130,00	m
Beam mld.	21,80	m
Main deck (free board deck) at side	9,50	m
Draft design	7,33	m
Deadweight all told at draft design	9.300	t

TONNAGE MEASUREMENT

London-Convention	7.850	GT
-------------------	-------	----

TANK CAPACITIES

Fuel HFO, incl. day and settling tank(s)	880	m ³
Fuel MGO, incl. day and settling tank(s)	97	m ³
Lubrication oil	48	m ³
Dirty oil	20	m ³
Sludge	21	m ³
Sewage	26	m ³
Potable water	73	m ³
Ballast water	4.597	m ³

Containers	TEU	TEU/FEU	30'	45'
In hold	206	12/97	135	97
Deck/hatches	597	51/269	376	232
Total	803	63/366	511	329

PERFORMANCES (APPROX.)

Speed at 7,30 m (100% M.C.R., 15% sea margin, no P.T.O.)	17,0	kn
----------------------------------------------------------	------	----

PROPULSION SYSTEM

- 1 Main engine MAK 6M43C, 6000 kW / 500 r.p.m. (M.C.R.)
- 1 Reduction gearbox with P.T.O.
- 1 Flexible coupling between main engine and gearbox
- 1 Flexible coupling between gearbox and shaft generator
- 1 Controllable pitch propeller, 4900 mm
- 1 Oil lubricated stern tube
- 1 Electrically driven bow thruster, 700 kW, CPP
- 1 Electrically driven stern thruster, 500 kW, CPP
- 1 Rudder, balance type
- 1 Electric/hydraulic steering gear, rotary vane

DECK LAY-OUT

- 2 Electric driven self-tensioning mooring winches, each with one warping head and one rope drum on poop deck
- 2 Electric/hydraulic driven self-tensioning anchor/mooring winches, each with one warping head and one rope drum on the forecastle deck
- 1 Rescue boat/life raft crane
- 1 Freefall lifeboat recovery/provision crane
- 1 Freefall lifeboat
- 1 Rescue boat
- 3 Life rafts
- Container fittings for 20', 30', 40' and 45' containers in holds, 20', 30', 40', 45', 48', 49' containers on deck
- Moveable cell guides in holds for 30', 40' and 45' containers

HOLDS AND HATCH COVERS

Weathertight hatches	Folding type
Hold 1	Dimensions 28,44 m x 18,60/13,20 m
Hold 2	Dimensions 28,44 m x 18,60 m
Hold 3	Dimensions 28,44 m x 18,60 m

AUXILIARY EQUIPMENT

- 1 Shaft generator, output appr. 1,600 kWe/2,000 kVA
- 2 Diesel generator sets, 531 kVA, 425 kWe
- 1 Emergency generator set, 125 kVA, 100 kWe
- 1 Shore supply
- 1 Anti heeling system, 1120 m³/hr
- 1 Bilge water separator acc. Marpol
- 1 CO₂ firefighting system for engine room and cargo hold
- Sprinkler system in hold 1

ACCOMMODATION

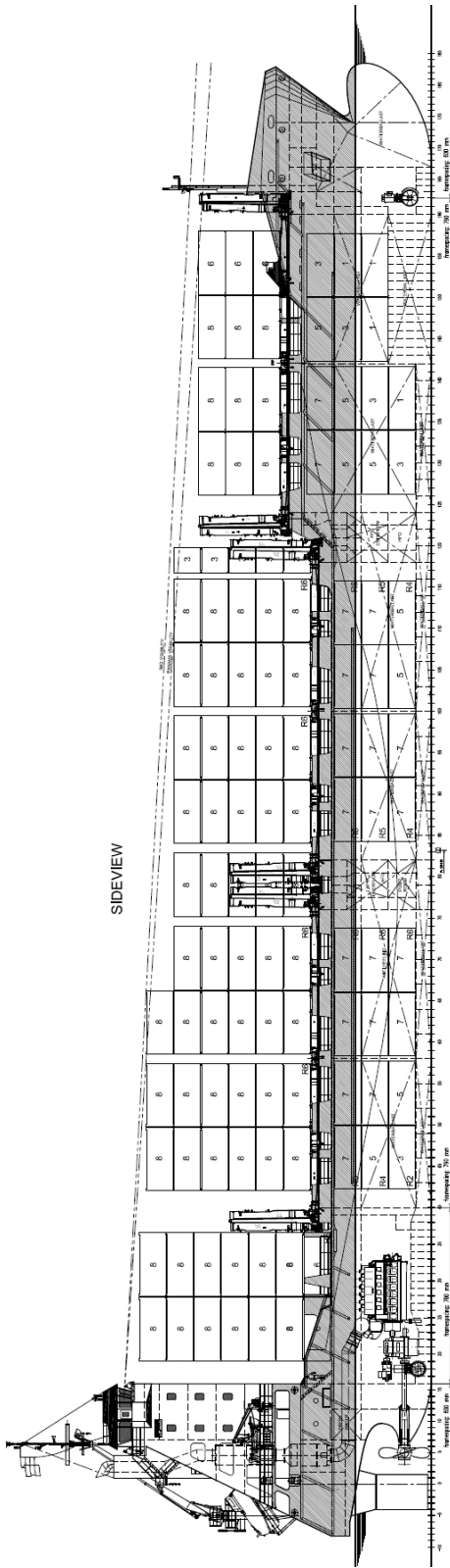
For a crew of 15 persons with heating, ventilation and air-conditioning

NAVIGATIONAL EQUIPMENT

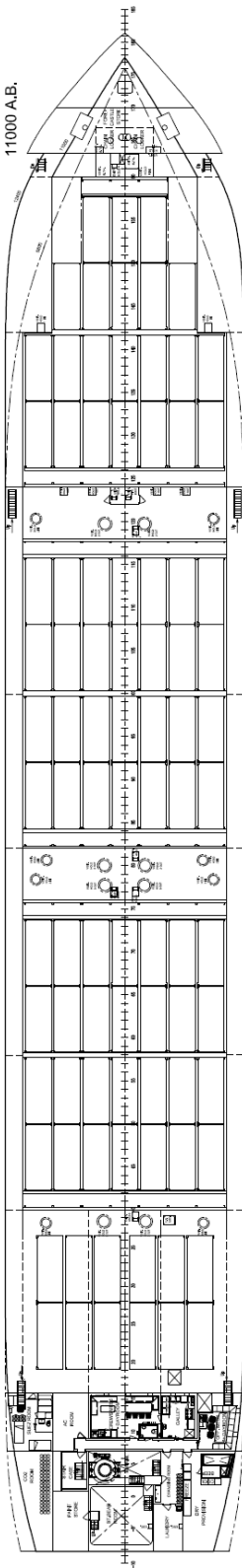
Communication system for GMDSS regulations area A3

OPTIONS

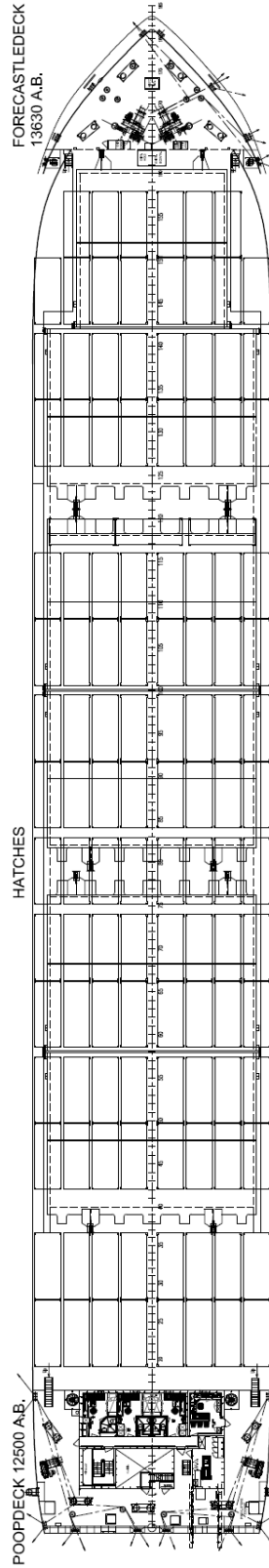
- MGO
- LNG 500 m³
- Tweendecks
- Handling cranes
- Cargo cranes
- Flap rudder



FORECASTLE STORE
11000 A.B.



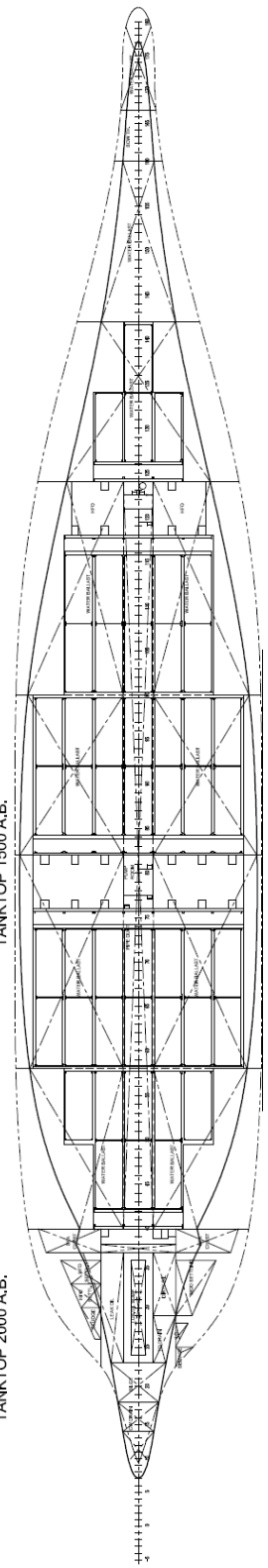
FORECASTLEDECK
13630 A.B.



POOPDECK 12500 A.B.

TANKTOP 1500 A.B.

TANKTOP 2000 A.B.



DAMEN CONTAINER FEEDER 800 STANDARD

DAMEN

DAMEN SHIPYARDS GORINCHEM

Member of the DAMEN SHIPYARDS GROUP 

Industrieterrein Avelingen West 20
4202 MS Gorinchem

P.O. Box 1
4200 AA Gorinchem
The Netherlands

phone +31 (0)183 63 99 11
fax +31 (0)183 63 21 89

info@damen.com
www.damen.com