



DAMEN COMBI FREIGHTER® 8200

M.V. ONEGO ROTTERDAM

GENERAL

YARD NUMBER	9438
DELIVERY DATE	April 2013
BASIC FUNCTIONS	Transport of bulk, steel coils, containers, forest products, general cargo, etc.
CLASSIFICATION	Lloyds Register ✕ 100 A1, ✕ LMC, UMS, SCM Equipped for dangerous goods according to SOLAS reg. 54 II2, excl. Class I and VII. Strengthened for heavy cargo up to 15 t/m ² Ice 1A acc. Swedish-Finnish Regs 2002
IMO NO.	9631345

DIMENSIONS

LENGTH O.A.	118.14	m
LENGTH B.P.P.	115.70	m
BEAM MLD.	15.90	m
DEPTH	8.80	m
BALLAST DRAFT	4.60	m
SUMMERDRAFT	7.20	m
DEADWEIGHT	8,268	ton
GROSS TONNAGE	5,751	ton

CAPACITIES

HOLD CAPACITIES	10,510	m ³ (371,155 cuft)
HFO (IFO 380)	497	m ³
GAS OIL	36	m ³
LUB.OIL CLEAN	34	m ³
DIRTY OIL	10	m ³
SLUDGE	19	m ³
SEWAGE	52	m ³
POTABLE WATER	52	m ³
BALLAST WATER	3,028	m ³

CONTAINER CAP. IN HOLD	171	TEU
CONTAINER CAP. ON DECK	165	TEU
TOTAL NUMBER	336	TEU

PERFORMANCES

Trial speed at max. draft and 2,970 kW output: 13.6 knots

NAUTICAL AND COMMUNICATION EQUIPMENT

Radio equipment is according to GMDSS for area A3

PROPULSION SYSTEM

MAIN ENGINE	1x MAK, type 6M32C
OUTPUT	2,970 kW at 600 rpm
PROPELLER	1x CPP, 4,250 mm
BOW THRUSTER	FPP, 400kW, electrically driven

HATCHES & TWEENDECK

Weatherdeck hatches pontoon type, full tweendeck pontoon type, three positions, operated by gantry crane and cargo cranes.

AUXILIARY EQUIPMENT

3 diesel generator sets 438 kVA each
 1 shaft generator, 585 kVA
 1 emergency generator set 120kVA
 2 starting air compressors
 2 HFO separators
 1 LO separator
 1 booster unit
 2 fuel oil trim pump
 1 bilge water separator acc. to Marpol Regulations
 2 general service pumps
 1 fire fighting pump
 1 CO₂ fire fighting system for the engine room and holds.

DECK LAY-OUT AND EQUIPMENT

Cargo cranes 2x60 ton at 16m reach / 34 ton at 28m
 Anti heeling system
 Steering gear type balance rudder, rotary vane gear
 Container fittings in tank top and on hatch covers
 Lashing eyes in hold and outside of coaming
 Hold ventilation: 105,000 m³/hrs
 Fresh water generator of 6m³/ 24 hours

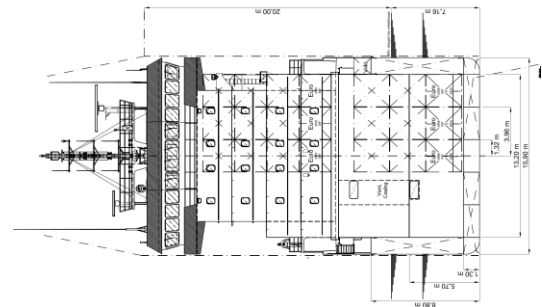
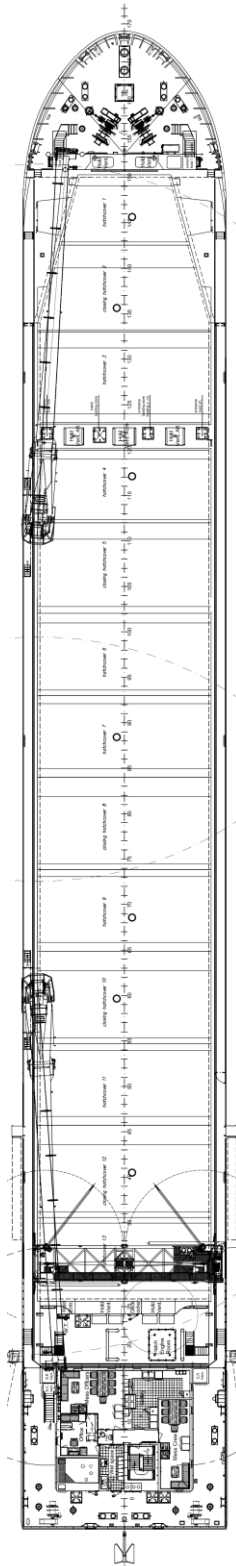
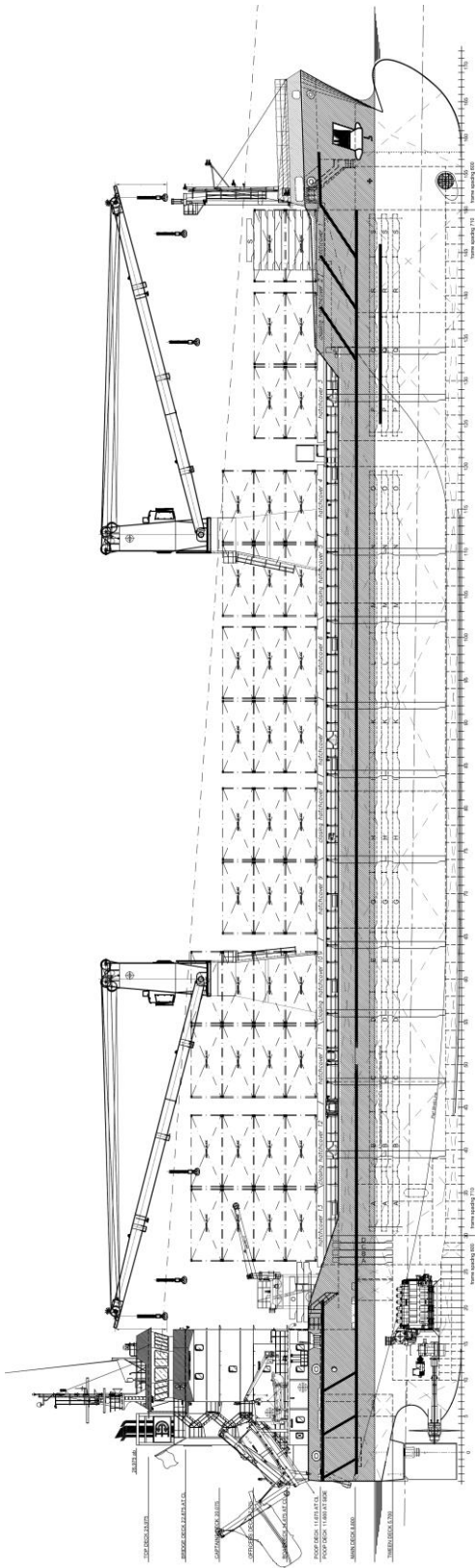
ACCOMMODATION

For captain, officers and crew for a total of 14 persons with heating, ventilation and air-conditioning.

MANAGING OWNER

HighSeas Shipping Eight B.V., The Netherlands

DAMEN



DAMEN COMBI FREIGHTER® 8200

M.V. ONEGO ROTTERDAM

DAMEN

DAMEN SHIPYARDS BERGUM

Member of the DAMEN SHIPYARDS GROUP



Damsingel 4 (Industrieterrein Zuid)
9262 NC Sumar
The Netherlands

P.O. Box 7
9250 AA Bergum

phone +31 (0)511 46 72 22
fax +31 (0)511 46 42 59

info@damen-bergum.nl
www.damen-bergum.nl