



DAMEN COMBI FREIGHTER[®] 8200

"M.V. MARFAAM"

GENERAL

YARD NUMBER	9425
DELIVERY DATE	November 2011
BASIC FUNCTIONS	Transport of bulk, steel coils, containers, forest products, general cargo, etc.
CLASSIFICATION	Lloyds Register ✕ 100 A1, ✕ LMC, UMS, SCM Equipped for dangerous goods according to SOLAS reg. 54 II2, excl. Class I and VII. Strengthened for heavy cargo up to 15 t/m ² Ice 1A acc. Swedish-Finnish Regs 2002
IMO NO.	9526100

DIMENSIONS

LENGTH O.A.	118.14	m
LENGTH B.P.P.	112.29	m
BEAM MLD.	15.90	m
DEPTH	8.80	m
BALLAST DRAFT	4.60	m
SUMMERDRAFT	7.20	m
DEADWEIGHT	8.429	ton
GROSS TONNAGE	5.422	ton

CAPACITIES

HOLD CAPACITIES	10.510	m ³ (371.155 cuft)
HFO (IFO 380)	491	m ³
GAS OIL	57	m ³
LUB.OIL CLEAN	34	m ³
DIRTY OIL	9	m ³
SLUDGE	19	m ³
SEWAGE	50	m ³
POTABLE WATER	52	m ³
BALLAST WATER	2.946	m ³

CONTAINER CAP. IN HOLD	171	TEU
CONTAINER CAP. ON DECK	170	TEU
TOTAL NUMBER	341	TEU

PERFORMANCES

Trial speed at max. draft and 2.970 kW output: 13.6 knots

NAUTICAL AND COMMUNICATION EQUIPMENT

Radio equipment is according to GMDSS for area A3

PROPULSION SYSTEM

MAIN ENGINE	1x MAK, type 9M 25 C
OUTPUT	2.970 kW at 750 rpm
PROPELLER	1x CPP, 4250 mm
BOW THRUSTER	FPP, 400kW, electrically driven

HATCHES & TWEENDECK

Weatherdeck hatches pontoon type, tweendecks pontoon type, two positions, operated by a gantry crane.

AUXILIARY EQUIPMENT

2 diesel generator sets 260kW each
 1 shaft generator, 530 kVA
 1 emergency generator set 120kVA
 2 starting air compressors
 2 HFO separators, 1 MGO separator
 1 LO separator
 1 booster unit
 2 fuel oil trim pump
 1 bilge water separator acc. to Marpol Regulations
 2 general service pumps
 1 fire fighting pump
 1 CO₂ fire fighting system for the engine room and holds.

DECK LAY-OUT AND EQUIPMENT

Steering gear type balance rudder, rotary vane gear
 Container fittings in tank top and on hatch covers
 Lashing eyes in hold and outside of coaming
 Hold ventilation: 105.000 m³/hrs
 Fresh water generator of 2m³/ 24 hours

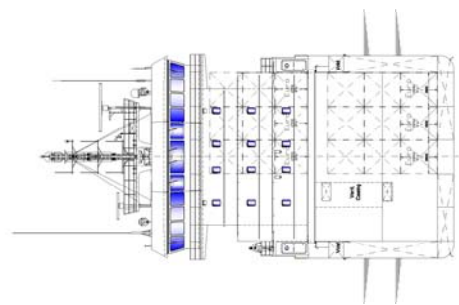
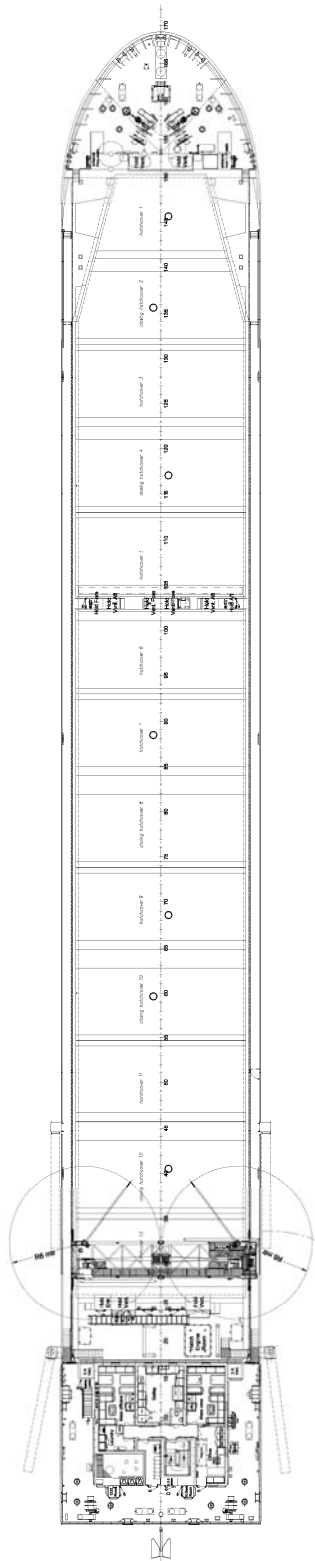
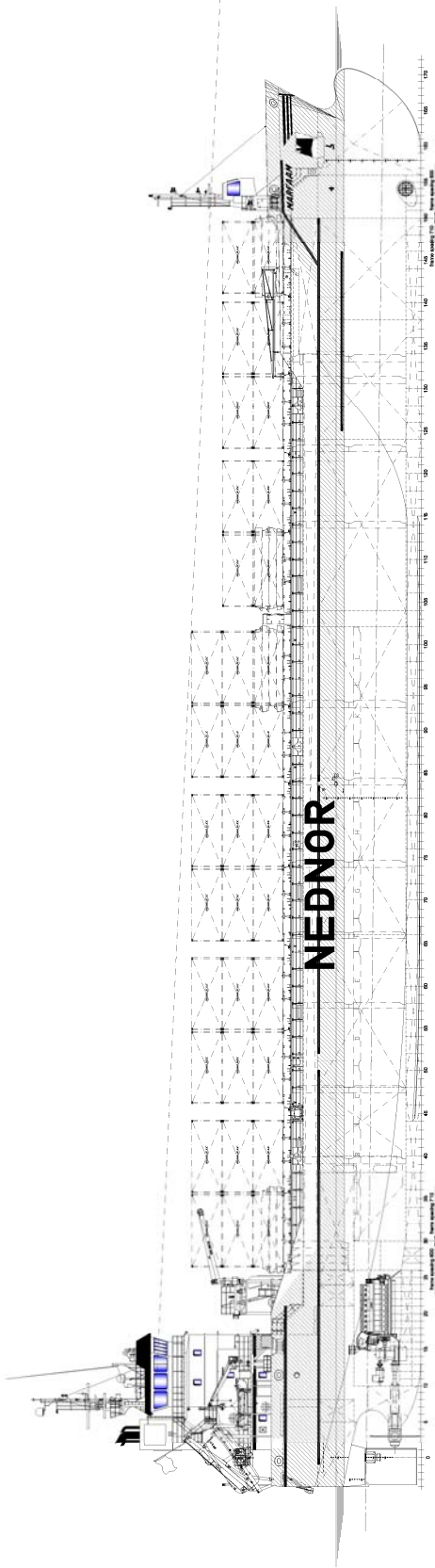
ACCOMMODATION

For captain, officers and crew for a total of 12 persons with heating, ventilation and air-conditioning.

MANAGING OWNER

Visser Shipping Company B.V., The Netherlands

DAMEN



DAMEN COMBI FREIGHTER[®] 8200

"M.V. MARFAAM"

DAMEN

DAMEN SHIPYARDS BERGUM

Member of the DAMEN SHIPYARDS GROUP



Damsingel 4 (Industrieterrein Zuid)
9262 NC Suameer
The Netherlands

P.O. Box 7
9250 AA Bergum

phone +31 (0)511 46 72 22
fax +31 (0)511 46 42 59

info@damen-bergum.nl
www.damen-bergum.nl