



COMBI FREIGHTER 3850

STANDARD

PICTURE OF SIMILAR VESSEL

GENERAL

Basic functions	Transporting of general cargo, e.g. bulk, steel coils, forest products
Classification	LRoS \approx 100A1, Container Cargoes on the cargo hatch covers, Strengthened for heavy cargo up to 15 T/m ² , Bottom Strengthened for Operating Aground and Loading and Unloading Aground, *IWS \approx LMC, UMS, BMTS* Dangerous cargo to SOLAS II-2 regulation 19 (excluding I and VII)

DIMENSIONS

Length overall	89,52 m
Length b.p.p.	84,99 m
Beam moulded	12,50 m
Depth moulded	7,00 m
Draft design	5,48 m
Deadweight	3.830 T
Tonnage measurement	2.545 GT

TANK CAPACITIES (APPR.)

Ballast water	1.340 m ³
Fuel oil	240 m ³
Potable water	60 m ³
Sewage	12 m ³
Lubrication oil	9 m ³
Bilge water	4 m ³
Dirty oil	6 m ³
Sludge	6 m ³
Urea	10 m ³

HOLDS

Hold (box shaped)	5.250 m ³ 185.400 Cft
Dimensions hold (LxBxH)	62,50 x 10,10 x 8,40 (m)
Grain bulkhead	2x Moveable, 10 stowage positions

CONTAINERS

In hold	108 TEU
On deck	64 TEU
Total	172 TEU

PERFORMANCES

Speed, d= 3,20 m	11,8 Kn
100% MCR approx.	

PROPULSION

Main engine	ABC 6DZC-Diesel (MGO), with SCR (Tier III), 1.104 kW at 800 rpm
Gearbox	Reverse reduction type
Stern tube	Oil lubricated (EAL)
Propeller	Fixed pitch, 2.600 mm
Steering gear	Electric-hydraulic
Rudder	Spade type
Bow thruster	Electric, fixed pitch, 280 kW

ELECTRICAL EQUIPMENT

Generator set	1x Diesel, 398 kVA - 50 Hz 1x Diesel, 135 kVA - 50 Hz 1x Diesel emergency, 88 kVA - 50 Hz
Shore supply	1x 230V/400V, 85A, 50 m cable

DECK LAY-OUT

Winch(es)	1x Electric-hydraulic anchor/mooring, with 2x warping heads
Hatches	1x Electric-hydraulic, hatch cover gantry type
Lifesaving	3x Life rafts 1x Rescue boat

SECONDARY SHIP SYSTEMS

Compressor(s)	2x Starting air
Separator(s)	1x Fuel oil filter 1x Lubrication oil filter 1x Bilge water acc. Marpol
Pump(s)	1x Ballast Water Treatment unit 2x General service 1x Emergency firefighting
Firefighting system	CO ₂ for engine room and cargo hold
Ventilation	Hold minimum 6 air changes per hour

ACCOMMODATION

Crew	9 persons with heating, ventilation and air-conditioning
------	--

NAUTICAL AND COMMUNICATION EQUIPMENT

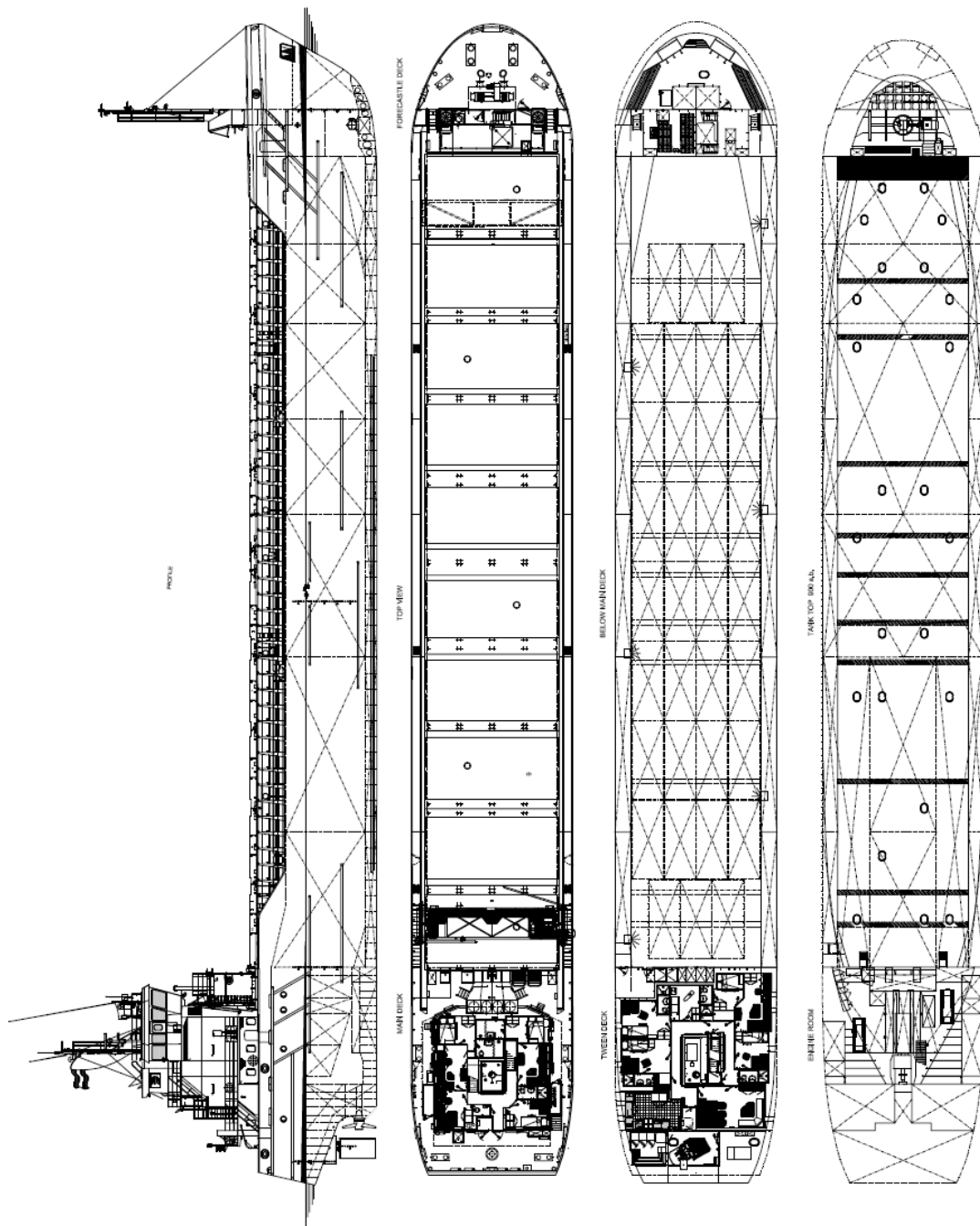
Radio telephone set	According to GMDSS for area A3
---------------------	--------------------------------

SPECIAL EQUIPMENT - OPTIONS

Condition based maintenance	
Controllable pitch propeller in combination with shaft alternator	
FC driven PTO generator	
Freshwater maker	
Main engine suitable for HFO	
Main engine suitable for LNG	
Main engine, output of 1.600 kW	
Sewage plant	
Tweendeck panels, full coverage of the hold	

COMBI FREIGHTER 3850

STANDARD



DAMEN

DAMEN SHIPYARDS GROUP

Avelingen-West 20
4202 MS Gorinchem
The Netherlands

P.O. Box 1
4200 AA Gorinchem
The Netherlands

phone +31 (0)183 63 99 22
fax +31 (0)183 63 21 89

info@damen.com
www.damen.com

© No part of the leaflet may be reproduced in any form, by print, photo print, microfilm, or any other means, without written permission from Damen Shipyards Group