



DAMEN COMBI FREIGHTER® 3850

M.V. "HARINGVLIET"

GENERAL

YARD NUMBER	9413
DELIVERY DATE	December 2012
BASIC FUNCTIONS	Transport of bulk, steel coils, containers, steel and forest products, general cargo, etc. Lloyds Register ✕ 100 A1, ✕ LMC, UMS, SCM
CLASSIFICATION	Equipped for dangerous goods according to SOLAS reg. 54 (II), excl. Class I and VII. Tanktop strengthened for heavy cargo up to 15 t/m ² <i>Descriptive note: loading / onloading aground</i>
IMO NO.	9625229

DIMENSIONS

LENGTH O.A.	88,60	m
LENGTH B.P.P.	84,99	m
BEAM MLD.	12,66	m
DEPTH	7,00	m
BALLAST DRAFT	3,20	m
SUMMERDRAFT	5,425	m
DEADWEIGHT	3.800	ton
GROSS TONNAGE	2.545	ton

CAPACITIES

HOLD CAPACITIES	5.250	m ³ (185.400 cuft)
MDO/HFO	156	m ³
GAS OIL	55	m ³
LUB.OIL CLEAN	6.7 + 1.9	m ³
DIRTY OIL	4	m ³
SLUDGE	4	m ³
SEWAGE	12	m ³
POTABLE WATER	55	m ³
BALLAST WATER	1.375	m ³

CONTAINER CAP. IN HOLD	108	TEU
CONTAINER CAP. ON DECK	80	TEU
TOTAL NUMBER	188	TEU

PERFORMANCES

Trial speed at ballast draft and 1.520 kW output: 12,3 knots

NAUTICAL AND COMMUNICATION EQUIPMENT

Radio equipment is according to GMDSS for area A3

PROPULSION SYSTEM

MAIN ENGINE	1x MAK, type 8M 20 C, running on HFO fuel (IFO 380) or gasoil
OUTPUT	1.520 kW at 1000 rpm
PROPELLER	1x CPP, 2.600 mm
BOW THRUSTER	FPP, 280 kW, electrically driven

HATCHES & TWEENDECK

Weather deck hatches dim. approx. 62,70 x 10,10 m
Steel pontoon hatches with gantry crane
Tweendeck panels at half height (incl. 2 grain bulkheads)

AUXILIARY EQUIPMENT

- 1 Shaft generator, 330 kVA-50Hz
- 1 Diesel generator set, Sisu, 175 kVA-50Hz
- 1 Emergency/harbour generator set, Sisu, 120 kVA-50Hz
- 2 Starting air compressors
- 1 HFO separator
- 1 LO separator
- 1 GO separator
- 1 Booster-unit
- 2 Fuel oil trim pumps
- 1 Bilge water separator, acc. to Marpol regulations
- 2 General service pumps, each 150 m³/hr at 2,3 bar
- 1 Fire fighting pump
- 1 Freshwater pressure set
- 1 CO₂ fire fighting system for engine room and cargo hold
- 1 steering gear unit

DECK LAY-OUT AND EQUIPMENT

- 1 Elec. driven bow anchor winch with two warping heads
- 1 Elec. driven capstan aft
- Rudder, fishtail type
- Container fittings in tank top and on hatch covers
- Lashing eyes in hold and lashing bollards on outside of coaming
- Electrically driven hold ventilation for 6 air changes per hour

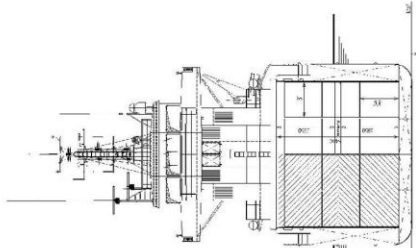
ACCOMMODATION

For captain and crew for a total of 8 persons with heating, ventilation and air-conditioning

MANAGING OWNER

Beheermaatschappij MS Haringvliet BV

CROSS SECTION



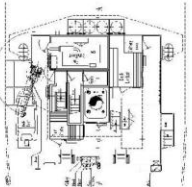
BRIDGEDECK



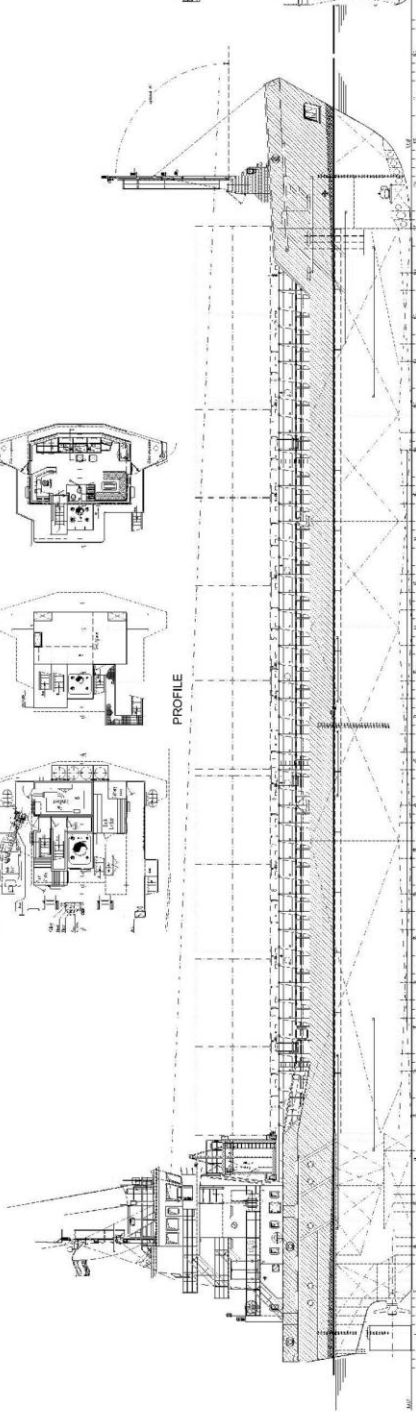
VOIDDECK



BOATDECK

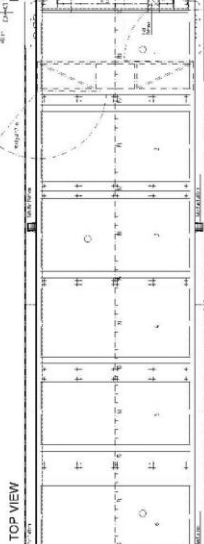


PROFILE

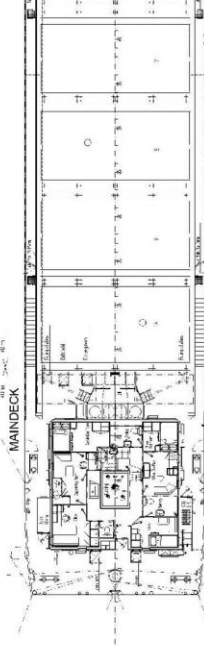


STORE DECK

FORECASTLE DECK



TOP VIEW

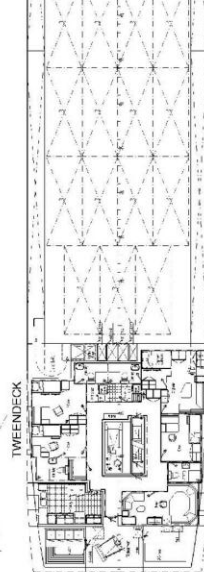


MANDECK

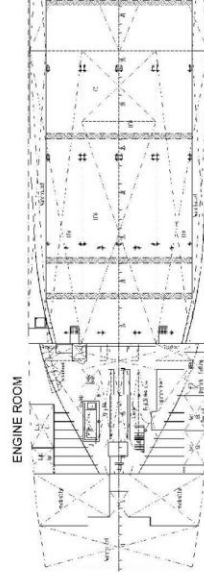
TWENDECK



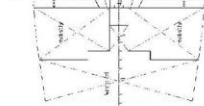
BELOW MANDECK



TANKTOP, 900 a.b.



ENGINE ROOM



DAMEN COMBI FREIGHTER® 3850

M.V. "HARINGVLIET"



DAMEN SHIPYARDS BERGUM

Member of the DAMEN SHIPYARDS GROUP



Damsingel 4 (Industrieterrein Zuid)
9262 NC SUMAR
The Netherlands

P.O. Box 7
9250 AA BURGUM

phone +31 (0)511 46 72 22
fax +31 (0)511 46 42 59

info@damen-bergum.nl
www.damen-bergum.nl