



DAMEN COMBI FREIGHTER[®] 13600

"M.V. STELLAR MAESTRO"

GENERAL

YARD NUMBER
BASIC FUNCTIONS

567501
Transport of containers, bulk, steel coils, forest products, general cargo LR +100 A1, +LMC, UMS, SCM Ice class 1A. St. Lawrence Seaway. Containers in holds and on hatches. Equipped for dangerous goods acc. to SOLAS reg. 19 II-2, excl. Class VII. Strengthened for heavy cargoes. Antigua & Barbuda
9549566

CLASSIFICATION
REGULATIONS

FLAG
IMO NUMBER

DIMENSIONS

LENGTH O.A. 146.25 m
LENGTH P.P. 136.99 m
BEAM MLD. 20.10 m
DEPTH MLD. 11.45 m
DRAUGHT 8.25 m
DEADWEIGHT 13600 ton
GROSS TONNAGE 9750 GT

TANK CAPACITIES

HOLD 1 4.005 m³ (= 141.435 cu.ft.)
HOLD 2 13.252 m³ (= 467.990 cu.ft.)
TOTAL HOLDS 17.257 m³ (= 609.425 cu.ft.)
HFO (RMG 35) 731 m³
MGO (DMA) 91 m³
LUBRICATION OIL 38 m³
DIRTY OIL 34 m³
SLUDGE 17 m³
SLUDGE 17 m³
SEPARATOR WATER 39 m³
POTABLE WATER 121 m³
BALLAST WATER 6.371 m³
CONTAINERS IN HOLDS 312 TEU stack load 100 ton/TEU
CONTAINERS ON DECK 392 TEU stack load 50 ton/TEU
CONTAINERS TOTAL 704 TEU

PERFORMANCE

SPEED 15.5 kn at 8.25m draft with 85%MCR, no PTO and no sea-margin

PROPULSION SYSTEM

MAIN ENGINE MAK 6M43
POWER 6000 kW
PROPELLER 4950 mm, 4 blades, CPP
BOW THRUSTER 730 kW, 4 blades, CPP
RUDDER Balance type
STEERING GEAR Rotary vane

HOLDS AND HATCH COVERS

WEATHERDECK HATCHES Hydraulic multi-folding type
TWEENDECK HATCHES 4 pontoons, uniform load 5.0 t/ m²
HOLD 1 Dimensions 26.93 m x 15.80/10.48 m
HOLD 2 Dimensions 69.82 m x 15.80 m
TANKTOP LOAD 18 ton/m² uniform

AUXILIARY EQUIPMENT

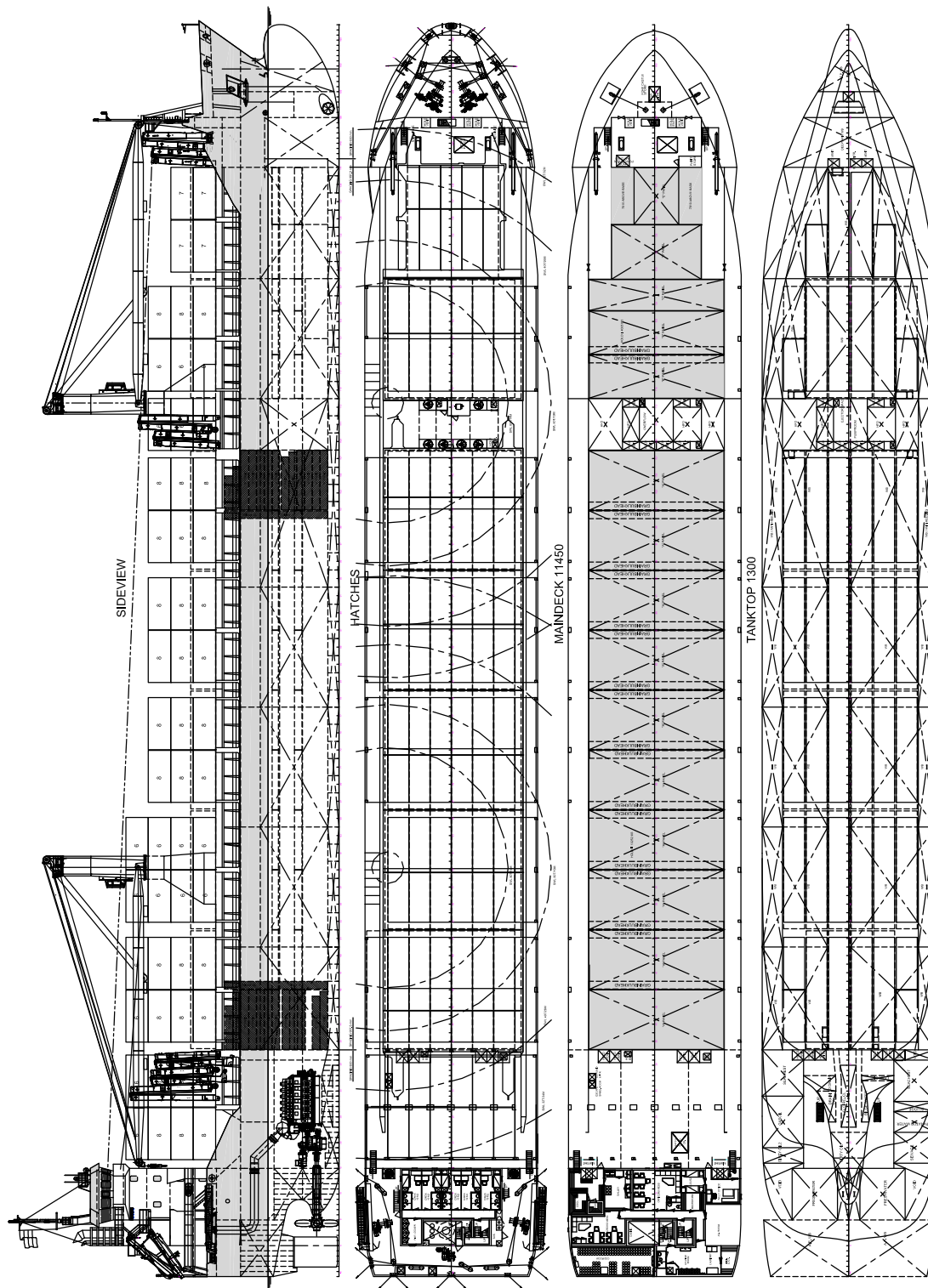
SHAFT GENERATOR 1x 1.250 kVA, 50 Hz
DIESEL GENERATORSETS 3x 563 kVA, 50 Hz
EMERGENCY GEN. SET 1x 188 kVA, 60 Hz
ANTI HEELING SYSTEM 1.150 m³/hr
FIRE FIGHTING CO₂ system for engine room and cargo holds
FIXED WATER SPRAY SYSTEM In hold 1

DECK LAY-OUT

ANCHOR/MOORING WINCHES 2x electro-hydraulic winches on forecastle deck, with a single drum and warping head
MOORING WINCHES 2x electro-hydraulic winches on poop deck, with a single drum and warping head
CARGO CRANES 2x 80(60)/40(32) ton / 14(19)/26(34) m
DECK CRANE 1x for free fall boat, rescue boat and life raft
CONTAINER FITTINGS For 20' and 40' on tanktop and hatch covers
LASHING EYES In holds and on coaming supports
REEFER PLUGS 80 on main deck
GRAINBULKHEAD 1 existing of 2 pcs. in hold 1, with 2 storepos.
GRAINBULKHEAD 1 existing of 2 pcs. in hold 2, with 17 storepos.

ACCOMMODATION

For a crew of 14 persons and 4 spare with heating, ventilation and air-conditioning



DAMEN COMBI FREIGHTER® 13600

"M.V. STELLAR MAESTRO"

DAMEN

DAMEN SHIPYARDS BERGUM

Member of the DAMEN SHIPYARDS GROUP



Damsingel 4
Industrieterrein Zuid
9262 NC Sumar

P.O. Box 7
9250 AA Burgum
The Netherlands

phone +31 (0)511 46 72 22
fax +31 (0)511 46 42 59

info@damen-bergum.nl
www.damen-bergum.nl