



# DAMEN COMBI COASTER<sup>®</sup> 2500

M.V. "CK PEARL"

## GENERAL

YARD NUMBER	9418
DELIVERY DATE	September 2012
BASIC FUNCTIONS	Transport of bulk, steel coils, containers, forest products, general cargo, etc.
CLASSIFICATION	Bureau Veritas ✕ Hull ✕ Mach General Cargo Ship / Container Ship Unrestricted Navigation ✕ AUT-UMS Strength Bottom Heavy Cargo
IMO NO.	9463877

## DIMENSIONS

LENGTH O.A.	87.50	m
LENGTH B.P.P.	84.30	m
BEAM MLD.	11.45	m
DEPTH	5.40	m
AIRDRAFT in BALLAST	6.50	m
BALLAST DRAFT	2.80	m
SUMMERDRAFT	4.15	m
DEADWEIGHT	ca. 2.570	ton
GROSS TONNAGE	1.767	ton

## CAPACITIES

HOLD CAPACITIES	3.425	m <sup>3</sup> (121.000 cuft)
GAS/ MDO OIL	135	m <sup>3</sup>
LUB.OIL CLEAN	2.2	m <sup>3</sup>
DIRTY OIL	2.2	m <sup>3</sup>
SLUDGE	2.2	m <sup>3</sup>
SEWAGE	6	m <sup>3</sup>
POTABLE WATER	28	m <sup>3</sup>
BALLAST WATER	1.300	m <sup>3</sup>

CONTAINER CAP. IN HOLD 54 TEU

## PERFORMANCES

Trial speed at ballast draft and 1.104 kW output: 11.2 knots

## NAUTICAL AND COMMUNICATION EQUIPMENT

Radio equipment is according to GMDSS for area A3

## PROPULSION SYSTEM

MAIN ENGINE	1x ABC, type 6 MDZC, running on MDO (DMB)
OUTPUT	1104 kW at 800 rpm
PROPELLER	1x FPP, 2000 mm in nozzle
BOW THRUSTER	FPP, 267 kW, diesel driven, 4 outlet channels

## HATCHES

Weather deck hatches dim. approx. 56,70 x 9,30 m  
Steel pontoon hatches with gantry crane

## AUXILIARY EQUIPMENT

- 2 Diesel Generator sets, Sisu, 137 kVA-50 Hz
- 1 Emergency/harbour generator set, Sisu, 71 kVA-50Hz
- 2 starting air compressors
- 1 MDO Filter separator
- 1 LO Filter separator
- 1 Fuel oil trim pimp
- 1 Bilge water separator, acc. To Marpol regulations
- 2 General service pumps, each 150 m<sup>3</sup>/hr at 2,3 bar
- 1 Fire fighting pump
- 1 Freshwater pressure set
- 1 CO<sub>2</sub> fire fighting system for engine room
- 1 steering gear unit

## DECK LAY-OUT AND EQUIPMENT

- 1 Hydr. driven bow anchor winch with two warping heads
- 1 Hydr. driven stern anchor winch with one warping head
- Rudder, fishtail type
- Lashing eyes in hold and on outside of coaming
- 2 Moveable grain bulkheads with 13 stowage positions
- Electrically driven hold ventilation for 6 air changes per hour

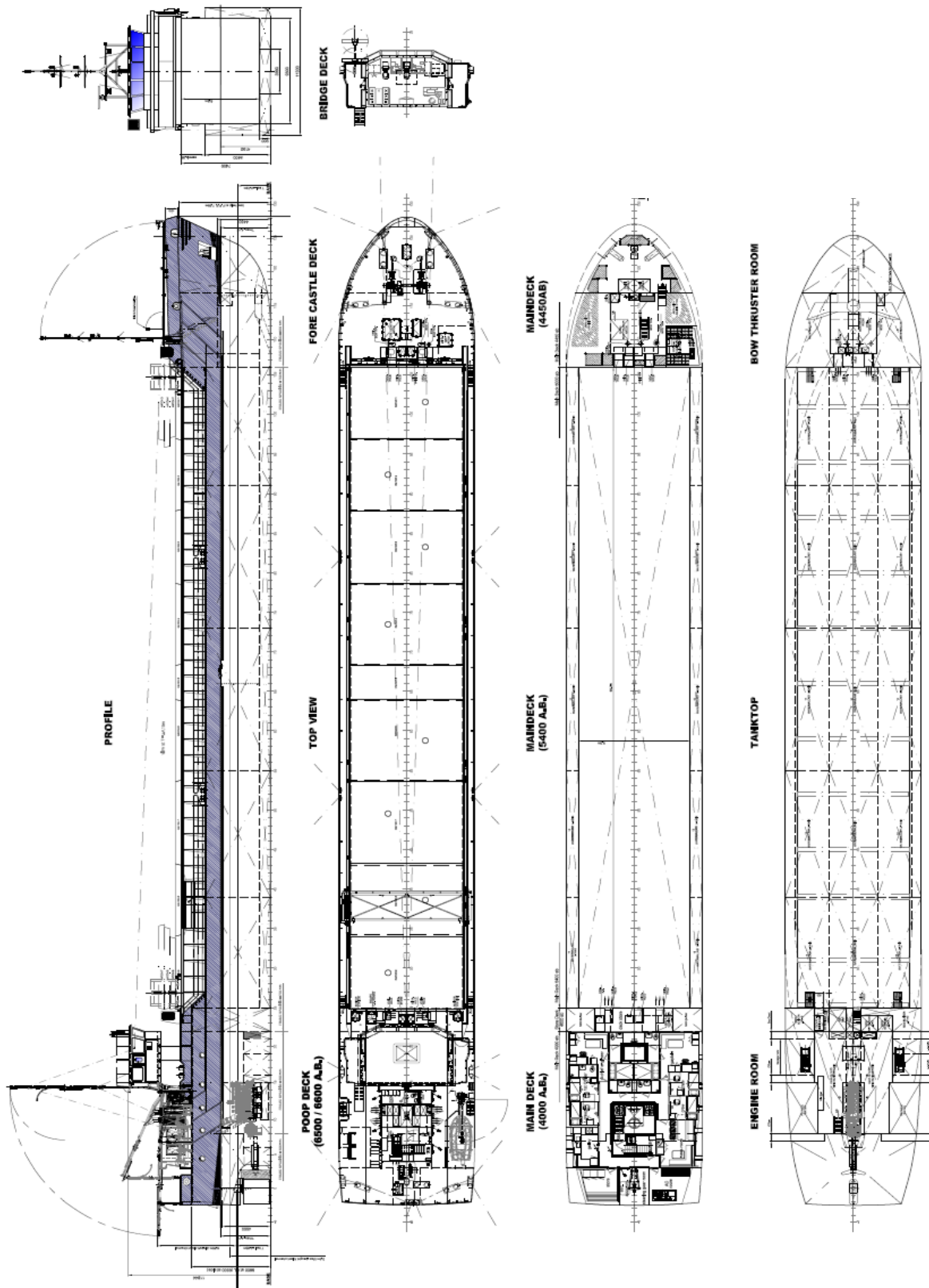
## ACCOMMODATION

For captain and crew for a total of 6 (+2) persons with heating, ventilation and air-conditioning

## MANAGING OWNER

United Shipping Company Holding, The Netherlands

**DAMEN**



# DAMEN COMBI COASTER<sup>®</sup> 2500

M.V. "CK PEARL"

**DAMEN**

DAMEN SHIPYARDS BERGUM

Member of the DAMEN SHIPYARDS GROUP



Damsingel 4 (Industrieterrein Zuid)  
9262 NC SUMAR

P.O. Box 7  
9250 AA BURGUM  
The Netherlands

phone +31 (0)511 46 72 22  
fax +31 (0)511 46 42 59

info@damen-bergum.nl  
www.damen-bergum.nl