



DAMEN COMBI COASTER[®] 2500

M.V. "UNION SILVER"

GENERAL

YARD NUMBER	9377
DELIVERY DATE	January 2011
BASIC FUNCTIONS	Transport of bulk, steel coils, containers, forest products, general cargo, etc.
CLASSIFICATION	Bureau Veritas ✳ Hull ✳ Mach General Cargo Ship / Container Ship Unrestricted Navigation ✳ AUT-UMS
IMO NO.	STRENGTH BOTTOM Heavy Cargo 9374909

DIMENSIONS

LENGTH O.A.	87.50	m
LENGTH B.P.P.	84.30	m
BEAM MLD.	11.45	m
DEPTH	5.40	m
AIRDRAFT in BALLAST	6.50	m
BALLAST DRAFT	2.80	m
SUMMERDRAFT	4.15	m
DEADWEIGHT	ca. 2.570	ton
GROSS TONNAGE	1.767	ton

CAPACITIES

HOLD CAPACITIES	3.425	m ³ (121.000 cuft)
GAS/ MDO OIL	135	m ³
LUB.OIL CLEAN	2.2	m ³
DIRTY OIL	2.2	m ³
SLUDGE	2.2	m ³
SEWAGE	6	m ³
POTABLE WATER	28	m ³
BALLAST WATER	1.300	m ³

CONTAINER CAP. IN HOLD 54 TEU

PERFORMANCES

Trial speed at ballast draft and 1.104 kW output: 11.2 knots

NAUTICAL AND COMMUNICATION EQUIPMENT

Radio equipment is according to GMDSS for area A3

PROPULSION SYSTEM

MAIN ENGINE	1x ABC, type 6 MDZC, running on MDO
	DMB
OUTPUT	1104 kW at 800 rpm
PROPELLER	1x FPP, 2000 mm in nozzle
BOW THRUSTER	FPP, 267 kW, diesel driven, 4 outlet channels

HATCHES

Weather deck hatches dim. approx. 56,70 x 9,30 m
Steel pontoon hatches with gantry crane

AUXILIARY EQUIPMENT

- 2 Diesel Generator sets, Sisu, 137 kVA-50 Hz
- 1 Emergency/harbour generator set, Sisu, 71 kVA-50Hz
- 2 starting air compressors
- 1 MDO Filter separator
- 1 LO Filter separator
- 1 Fuel oil trim pimp
- 1 Bilge water separator, acc. To Marpol regulations
- 2 General service pumps, each 150 m³/hr at 2,3 bar
- 1 Fire fighting pump
- 1 Freshwater pressure set
- 1 CO₂ fire fighting system for engine room
- 1 steering gear unit

DECK LAY-OUT AND EQUIPMENT

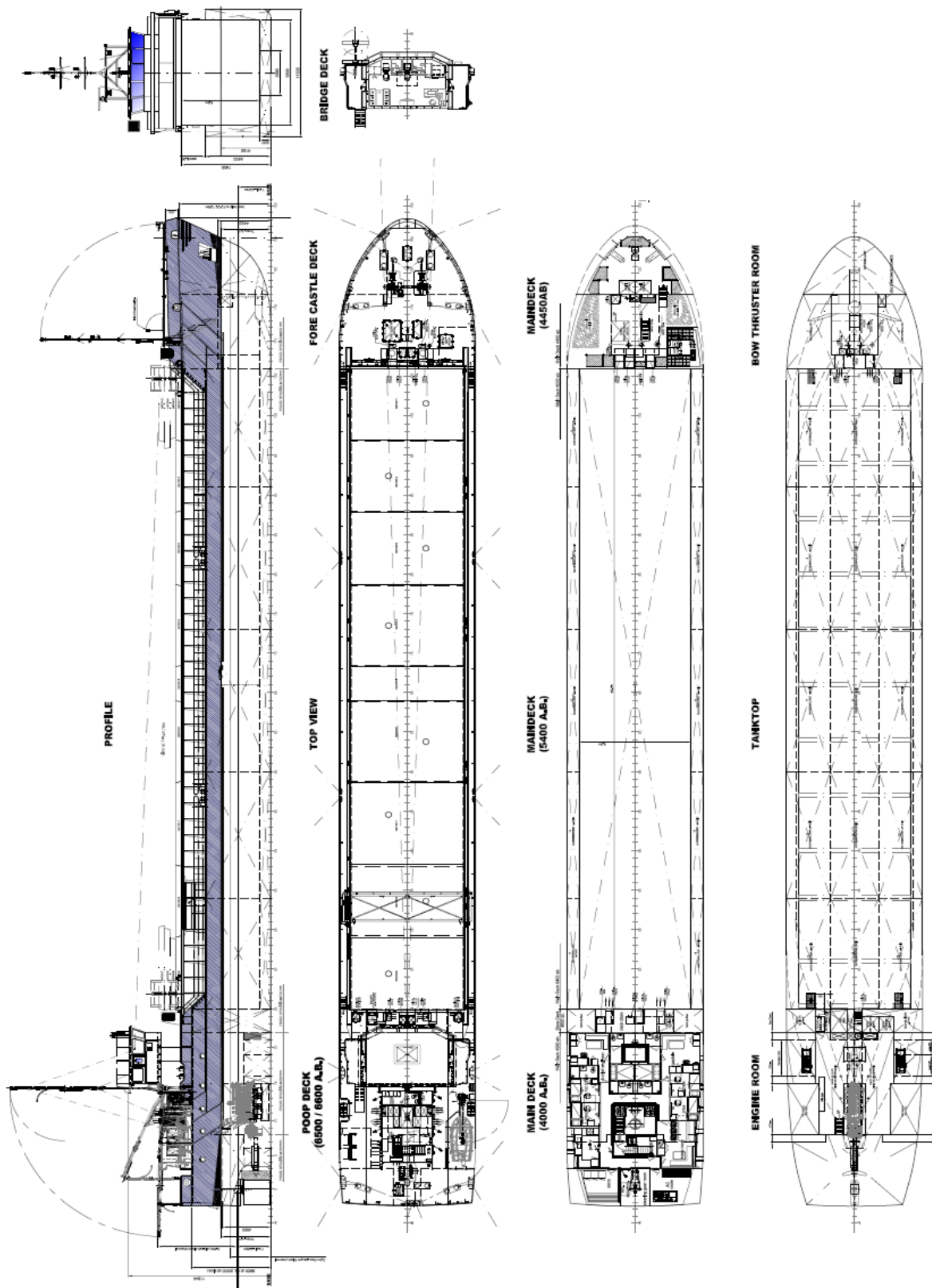
- 1 Hydr. driven bow anchor winch with two warping heads
- 1 Hydr. driven stern anchor winch with one warping head
- Rudder, fishtail type
- Lashing eyes in hold and on outside of coaming
- 2 Moveable grain bulkheads with 13 stowage positions
- Electrically driven hold ventilation for 6 air changes per hour

ACCOMMODATION

For captain and crew for a total of 6 (+2) persons with heating, ventilation and air-conditioning

MANAGING OWNER

Union Transport Group plc, Bromley UK



DAMEN COMBI COASTER[®] 2500

M.V. "UNION SILVER"

DAMEN

DAMEN SHIPYARDS BERGUM

Member of the DAMEN SHIPYARDS GROUP



Damsingel 4 (Industrieterrein Zuid)
9262 NC Suameer

P.O. Box 7
9250 AA Bergum
The Netherlands

phone +31 (0)511 46 72 22
fax +31 (0)511 46 42 59

info@damen-bergum.nl
www.damen-bergum.nl