

## DAMEN STAN PONTOON® B27

### GENERAL

TYPICAL APPLICATIONS  
TYPICAL AREA OF OPERATION  
CLASSIFICATION

Deck Cargo, RoRo Cargo  
Deep sea, Coastal waters, Harbours, Inland waters  
Lloyd's Register + 100 AT Pontoon  
IWS for non-propelled and unmanned vessels

### DIMENSIONS

LENGTH MOULDED	91,50	m
BEAM MOULDED	27,40	m
DEPTH MOULDED	6,10	m
DRAUGHT MAX	4,90	m
FREE DECK SPACE	2.490	m <sup>2</sup>
DEADWEIGHT MAX.	9.800	ton

### CAPACITIES

DECK LOAD	20 ton/m <sup>2</sup>
BALLAST TANKS	17 pcs. : 13.751 m <sup>3</sup>
DECK THICKNESS	20 mm extra heavy deck

### ARRANGEMENT

PUMP ROOM	On starboard the pump room with manifold is located with all preparations for plug and play installation of optional equipment.
LASHING STORE	On portside a lashing store is located for storing equipment.
SAFETY	All spaces are provided with double exits
LIFE SAVING	2 lifebuoys
FIFI	3 fire extinguishers

### DESIGN CONDITIONS

SEA WATER TEMPERATURE	0° to +35° C
OUTSIDE AIR TEMPERATURE	-5° to +45° C

### STANDARD EXECUTION

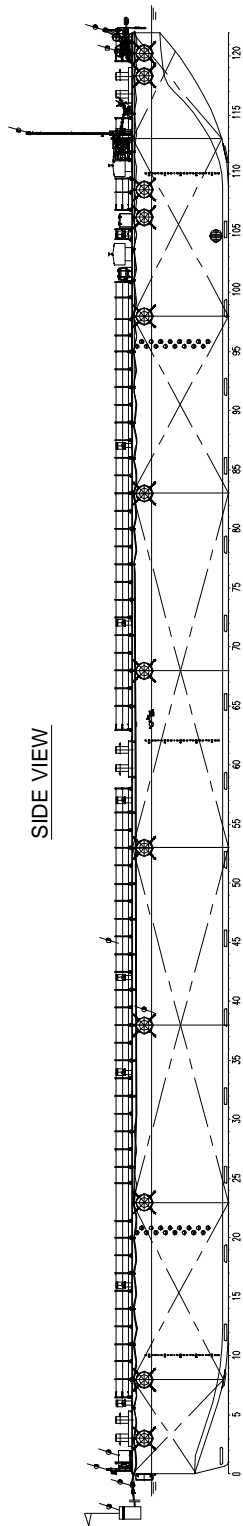
BALLAST SYSTEM	Ballast lines DN 250 to all tanks
TOWING BRACKETS	One on PS and one on SB at foredeck
FAIR LEADS	At the foreside of the towing brackets
BOLLARDS	6 pcs. standard, insert plates at every section
DRAUGHT MARKS	At fore, mid and aft on PS and SB every 20 cm
BOARDING LADDERS	2 on SB and 2 on PS in recesses of the hull
CATHODIC PROTECTION	Zinc anodes on underwater part of the hull
MANHOLES	Flush bolted manholes
ENTRY / ESCAPE	Gas-spring hatch on coming and easy escape manhole for pump room and lashing store
HATCHES	Both pump room and lashing store have a large flush-bolted hatch
EMERGENCY TOWING PIN	1 pc. flush mounted in the bow
RAMP RECESS	RoRo ramp recess at bow (10 x 1.5m) and stern (14 x 1.5m)
LIFTING EYES	Four lifting eyes flush with main deck and covered with bolted steel plates to lift the pontoon

### OPTIONAL EQUIPMENT (PLUG AND PLAY)

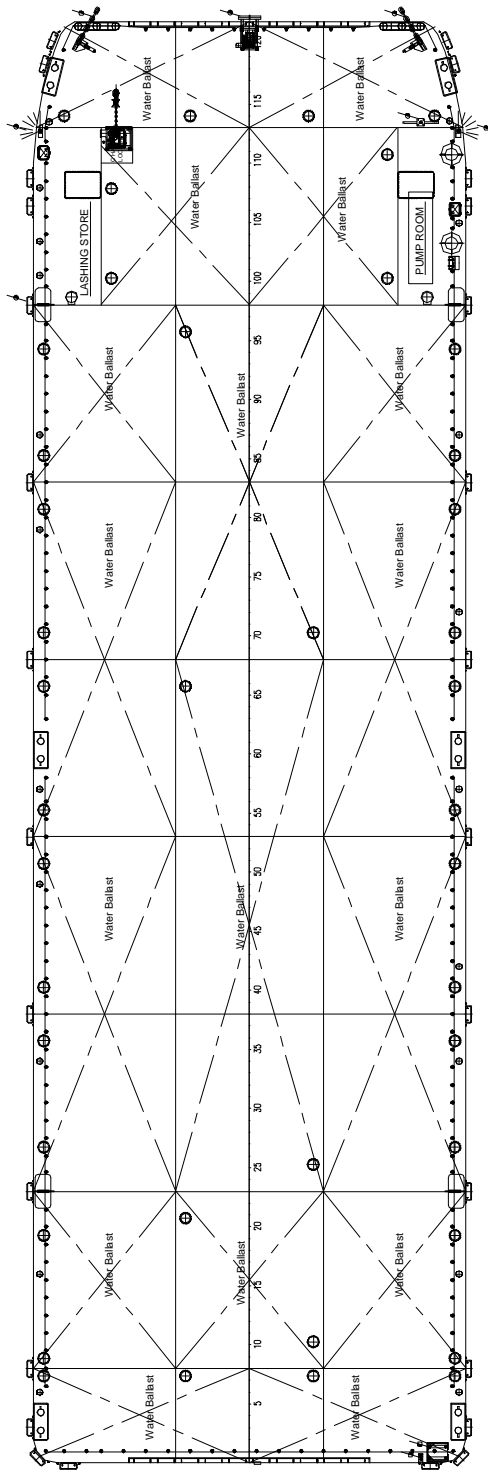
BALLAST PUMP	Two 400 m <sup>3</sup> /h ballast pump
DE-AERATION CAPS	Standard de-aeration caps for all tanks
GENERATOR SET	Caterpillar C4.4, 94 ekW
FENDERING	Tyre fender system
TOWING ARRANGEMENT	Chains and towing bridle
EMERGENCY TOWING	Emergency towing wire with buoy
RECOVERY WINCH	At the bow for retrieval of towing bridle
NAVIGATION LIGHTING	Navigation lights according to the standard for international towage
ANTI-FOULING	Anti-fouling paint system
RAILING	Removable stanchions with wire guard rails
RAMP PANELS	1.5 meter width and 12 meter length
ANCHOR / MOORING SYSTEM	On foreship one anchor/mooring winch is equipped with warping head, mooring lines, anchor and chains
EMERGENCY ANCHOR	At the stern on sliding ramp

\* Mentioned deadweight is calculated and excluding optional equipment

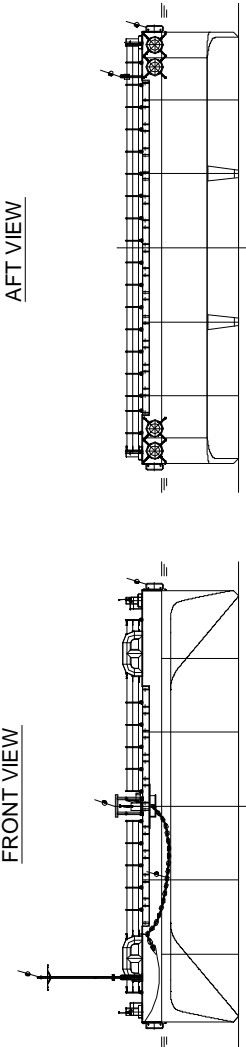
\* Picture shows an Artist Impression of a Stan Pontoon B27 with full option package



SIDE VIEW



TOP VIEW



FRONT VIEW

AFT VIEW

# DAMEN STAN PONTOON<sup>®</sup> B27

**DAMEN**

DAMEN SHIPYARDS GORINCHEM

Member of the DAMEN SHIPYARDS GROUP



Industrieterrein Avelingen West 20  
4202 MS Gorinchem

P.O. Box 1  
4200 AA Gorinchem  
The Netherlands

phone +31 (0)183 63 99 11  
fax +31 (0)183 63 21 89

info@damen.nl  
www.damen.nl