



STAN PONTOON 8916 SD

“Takhta” / “Tyr” / “Tolstovka” / “Tambovka” / “Troistkoye” / “Tokur” / “Talakan”

GENERAL

Yard numbers	522506-12
Delivery date	May 2018
Typical applications	Deck Cargo, RoRo Cargo
Typical area of operation	Coastal waters, Harbours, Inland waters, Shallow draft
Classification	K★Pontoon, R3-RSN
Flag	Cyprus
Owner	Combi Lift GmbH

DIMENSIONS

Length moulded	89,25 m
Beam moulded	16,50 m
Depth moulded	3,00 m
Draught max.	1,83 m
Draught design inland	1,20 m
Deadweight inland	1000 ton

CAPACITIES

Deck load	8 ton/m ²
Void spaces	19 pcs
Deck thickness	10 mm extra heavy deck

DESIGN CONDITIONS

Sea water temperature	-05° to +35° C
Outside air temperature	-15° to +45° C

DECK LAYOUT

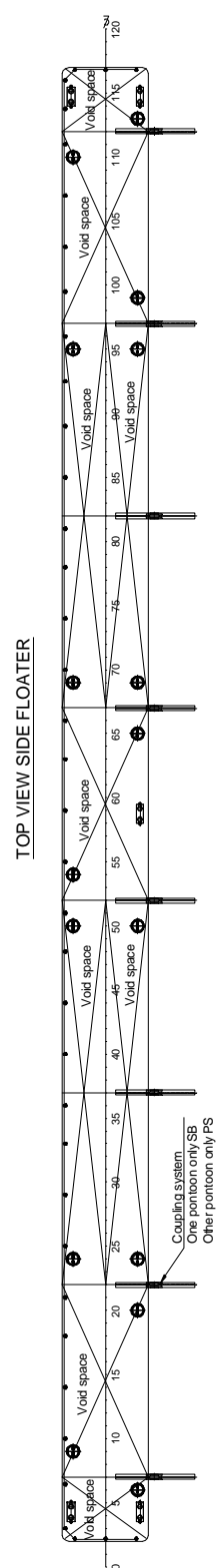
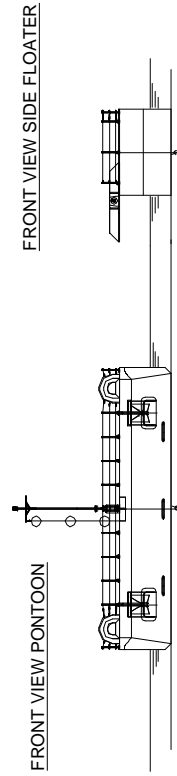
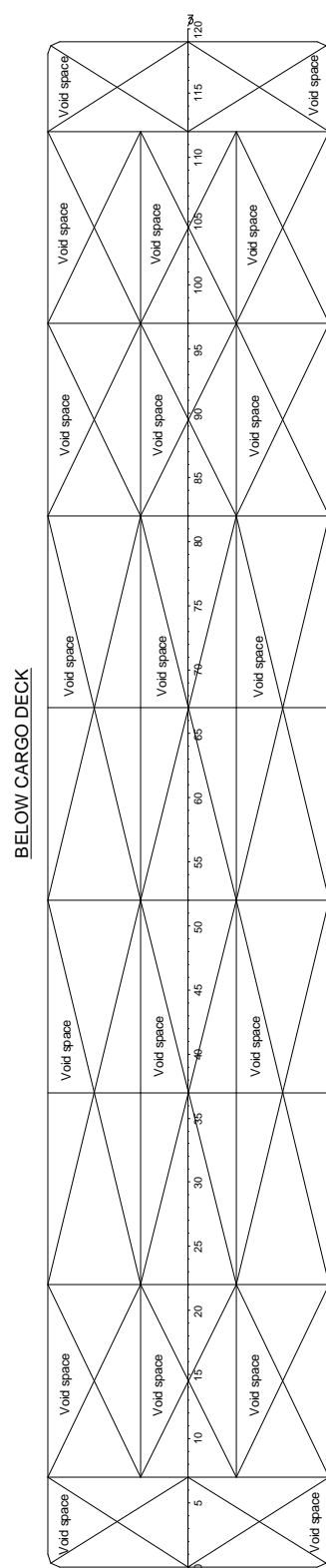
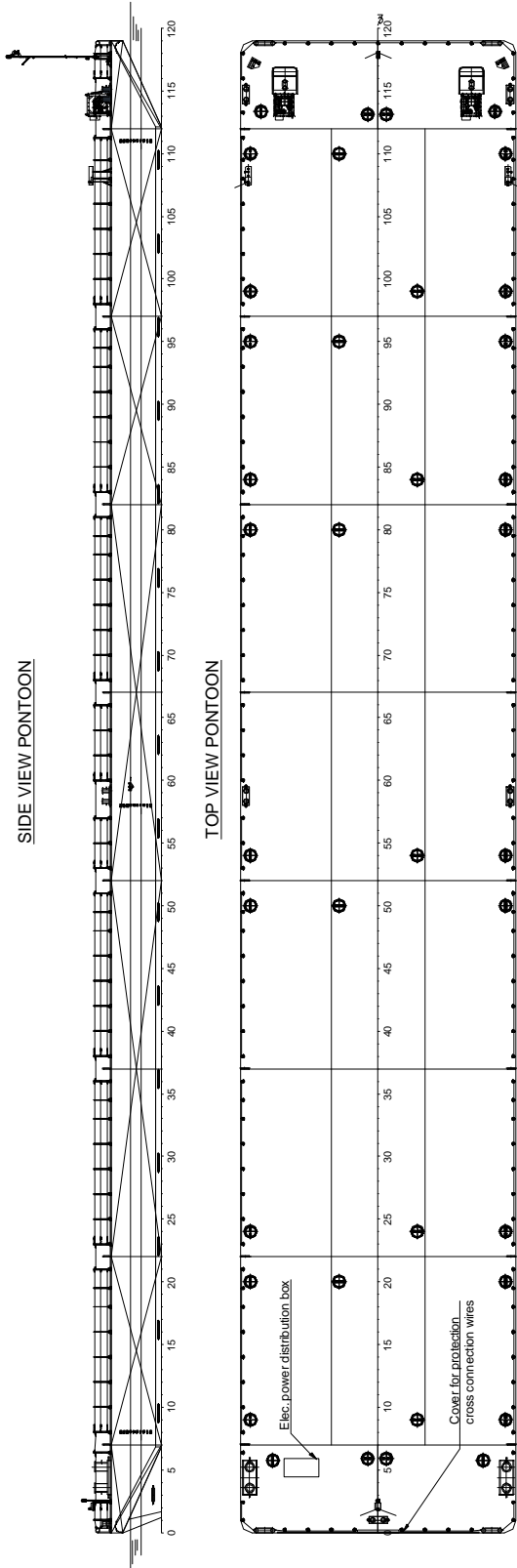
Towing brackets	One on PS and one on SB at fore deck
Fair leads	At the foreside of the towing brackets
Bollards	7 pcs, the aft two are also suitable for connection to a pusher
Deck edge round bar	A cover at the stern for protection of cross connection wires
Draught marks	At fore, midship and aft on PS and SB every 20 cm
Cathodic protection	Anodes on underwater part of the hull
Manholes	Flush bolted manholes
Anchor winches	At the bow two electrical anchor winches are provided with anchors and cables
Mooring ropes	Four mooring ropes are provided
Electrical system	Electrical distribution box on main deck for power distribution to winches and portable ballast pumps
Towing arrangement	Chains, towing bridle and emergency wire
Railing	Removable stanchions with wire guard rails
Masts	Mast and light stands for navigation lights
Navigation	Solar powered navigation lights
Coupling system	At both PS and SB 8 coupling eyes are provided to connect to side floaters

SIDE FLOATERS

Yard numbers	522513-16
Ships' name	“Zeya 1” / “Zeya 2” / “Zeya 3” / “Zeya 4”
Typical applications	Decrease the draft of main pontoon in shallow waters
Length moulded	86,25 m
Beam moulded	5,00m
Depth moulded	3,00 m
Coupling system	At main deck 8 connection beams and connection pins are provided for connection to the main pontoon.
Bollards	5 pcs
Draught marks	At fore, midship and aft on PS and SB every 20 cm
Manholes	Flush bolted manholes
Valves	4 voids are provided with gate valves below waterline operated from main deck

STAN PONTOON 8916 SD

“Takhta” / “Tyr” / “Tolstovka” / “Tambovka” / “Troistkoye” / “Tokur” / “Talakan”



DAMEN SHIPYARDS GROUP

Avelingen-West 20
4202 MS Gorinchem
The Netherlands

P.O. Box 1
4200 AA Gorinchem
The Netherlands

phone +31 (0)183 63 99 22
fax +31 (0)183 63 21 89

info@damen.com
www.damen.com