



DAMEN INFIELD CABLE LAYER 5000

CONCEPT

GENERAL

Basic functions	Infield cable laying
Classification	DNV
	✱1A1, Cable Laying Vessel, SF, E0, Dynpos AUTR, COMF – V(3) C(3), HELDK-SH, DK+, ICS, BIS
Flag	TBD

DIMENSIONS

Length o.a.	116.90 m
Length b.p.p.	111.50 m
Beam mld.	24.00 m
Depth mld.	9.80 m
Draught summer (base)	6.60 m
Deadweight (summer)	5700 t
Cargo deck area	1400 m ²

TANK CAPACITIES

Ballast water	3000 m ³
Fuel oil (service)	1600 m ³
Potable water (service)	300 m ³
Sewage	40 m ³
Heeling water	1300 m ³

PERFORMANCES (APPROX.)

Speed (at summer draught)	13.0 kn
Bollard pull	120 t

PROPULSION SYSTEM

Type	Diesel-electric
Propulsion power	2x electric motors 3000 kW each, frequency driven
Propellers	2x azimuth thrusters; FP, 3000 mm diameter
Bow thruster	2x 1500 kW, 2500 mm, tunnel 1x 1400 kW, 2650 mm, retractable

AUXILIARY EQUIPMENT

Networks	690 V, 440 V, 230 V - 60 Hz
Main generator sets	5x 2200 ekW at 900 rpm
Emerg. generator set	1x 250 ekW at 1800 rpm

DECK LAY-OUT

Anchor mooring winch	2x Electric, with rope drum and one warping head
Mooring winche	2x Electric, with 2 split type drum and one warping head
Deck crane	1x 25 t at 30 m
A-frame winch	1x 25 t hoisting winch below deck
Helicopter deck	Suitable for a Helicopter with 16 m rotor and a maximum weight of 9 t
Lifeboats	2x 50 persons
Fast rescue craft	1x 6.5m FRC

CABLE LAY EQUIPMENT

A-frame	1x 25 t, outreach 10m
Cable reels	8x For pre-cut lengths for inter array cables
Turntable	1x 3000t, 20m outer diameter
Cable tensioners	1x 10t 1x 30t
Abandon & Recovery winch	1x Pull 5t
Reel drive system	1x Hydraulically powered
ROV	1x Working class ROV (OFE)

ACCOMMODATION

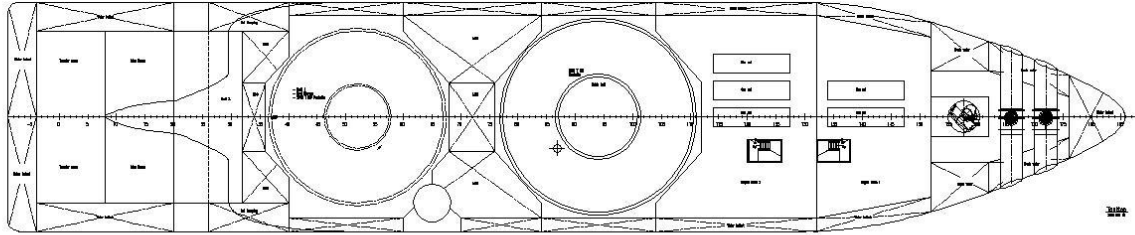
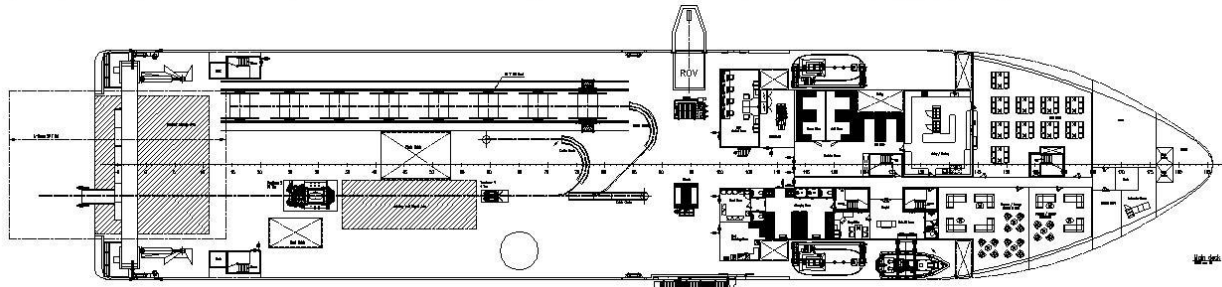
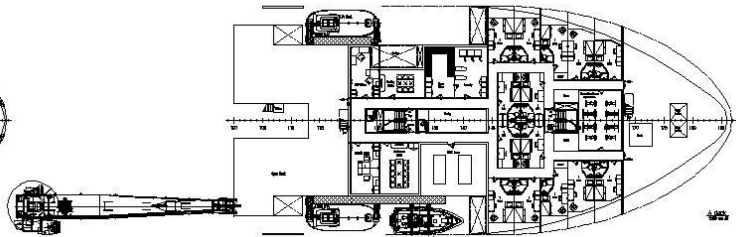
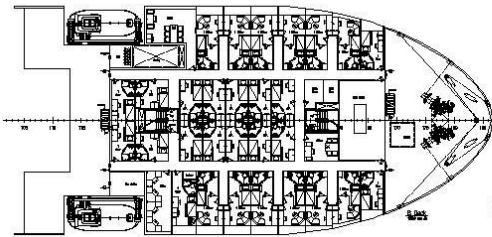
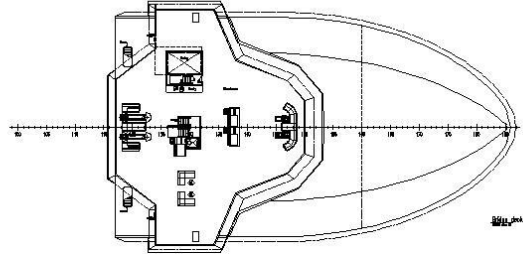
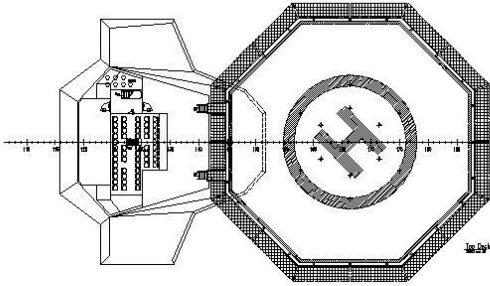
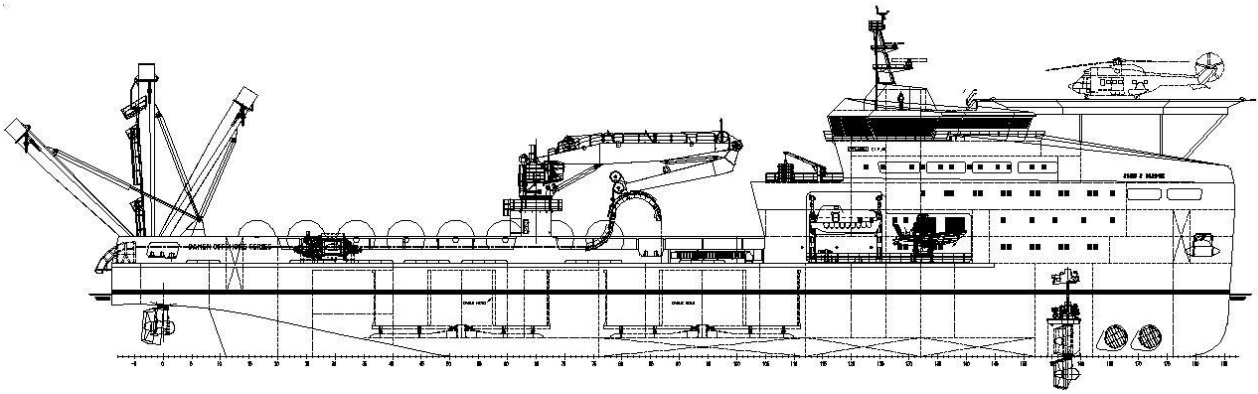
Officer and VIP	21 Persons
Crew	18 Persons
Special personnel	21 Persons
Total capacity	60 Persons

NAUTICAL AND COMMUNICATION EQUIPMENT

Radar systems	1x X-band + S-band, ECDIS
DP – system	DP-2
GMDSS	Area 3

OPTIONAL

Turntable	1x 2000t, 18m outer diameter
A-frame	1x 65 t, outreach 10m
Extended accommodation	100 Persons (total capacity)



DAMEN INFIELD CABLE LAYER 5000

CONCEPT

DAMEN

DAMEN SHIPYARDS GORINCHEM

Member of the DAMEN SHIPYARDS GROUP



Industrieterrein Avelingen West 20
4202 MS Gorinchem

P.O. Box 1
4200 AA Gorinchem
The Netherlands

phone +31 (0)183 63 99 11
fax +31 (0)183 63 21 89

info@damen.nl
www.damen.nl

DSGo-D&P-3-0-0612

Registered at the Chamber of Commerce, no. 23036357, under the name BV Scheepswerf Damen Gorinchem.
All our offers are without engagement unless stated otherwise.
All activities carried out in accordance with the VNSI General Yard Conditions (Netherlands Shipbuilding Industry Association).