



MULTI-ROLE AVIATION TRAINING VESSEL 2300

GENERAL

Primary mission	Training of: Helicopter air crew, Flight deck crew, Helicopter control
Secondary missions	Officer Sea Familiarization Training, Consort Duties, Operational diving support (mine warfare), Practice weapon recovery, Air Traffic Control
Classification	LR ✕ 100 A1, Shipright ACS (B), *IWS WDL (5 t/m2 maindeck aft to fr. 35) ECO (BWT, GW, IHM, OW P) ✕ LMC, UMS, NAV1 Descriptive notes: AIR, Shipright (BWMP(T), SERS), Training Vessel SPS-code
Statutory / Flag	Level II Class 2a, 4, 5, 6 and 7 i.a.w. applicable parts of DEF(AUST) 5000.
Naval aviation standard	

DIMENSIONS

Length o.a.	93.96 m
Beam mld.	14.40 m
Depth mld.	7.00 m
Draught summer / design (base)	3.90 / 3.68 m
Deadweight (design draught)	425 t
Mission deck area, load	240 m ² 5 t/m ²

TANK CAPACITIES

Ballast water	390 m ³
Fuel oil (service)	372 m ³
Potable water (service)	139 m ³
Aviation fuel F44 / JP-5	77 m ³

PERFORMANCES

Speed (at design draught)	17.0 kn at 100% MCR, Sea State 4
Endurance	14 days
Range	4400 nm at 85% MCR, Sea State 4

ACCOMMODATION

Crew	22 persons
RAN special personnel	71 persons
RAN special personnel, daytime only	20 persons

AUXILIARY EQUIPMENT

Networks	440V 60 Hz / 230V / 24 V
Main generator sets	4x Caterpillar C18, 425 ekW
Emerg. generator set	1x Caterpillar C9, 238 ekW
Sea keeping	Active fin stabilizers

PROPULSION SYSTEM

Main engines	2x Caterpillar 3516C-TA (C-rating)
Propulsion power	4700 bkW at 1800 rpm
Gearboxes	2x Reintjes LAF 1173 I
Propellers	2x CPP, D 2,80 m
Rudders	2x flap, spade type, independent
Bow thruster	1x FPP 400 kW, electrical motor driven

DECK LAY-OUT

Anchor mooring winch	1x electro- hydraulic with two mooring drums
Capstans aft	2x electric motor driven, 5t pull
Aft deck crane	1x offshore knuckleboom crane SWL 1.6t @ 16.6m
Fwd deck crane	1x knuckleboom crane SWL 1.4t@16mtr (harbour)
Mission deck cranes	1x overhead gantry crane SWL 2.0 t 1x telescopic lifting beam 2.5 t @ 4.0m, reconfigurable to 5.0 t @ 4.0m
Mission deck winch	1x electro- hydraulic winch, 200m rope drum, SWL 2.5 t, reconfigurable 5.0 t
Lifeboats	2x 48p each + 2x Zodiac 50p MES
Crash Boat	1x Zodiac ZH630
Container hatches	2x hydr. hatches for storage of 2x 20 ft or 4x 10ft containers on mission deck

NAUTICAL AND COMMUNICATION EQUIPMENT

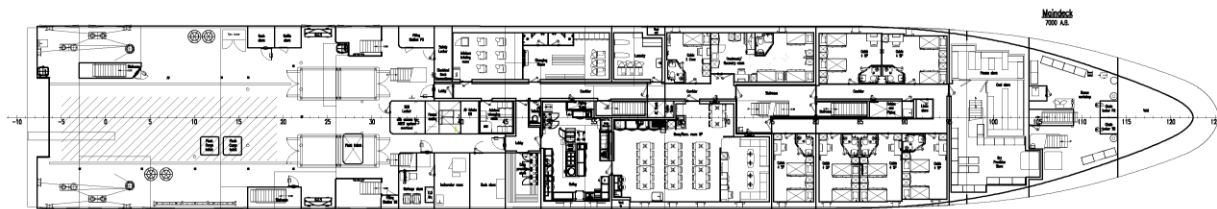
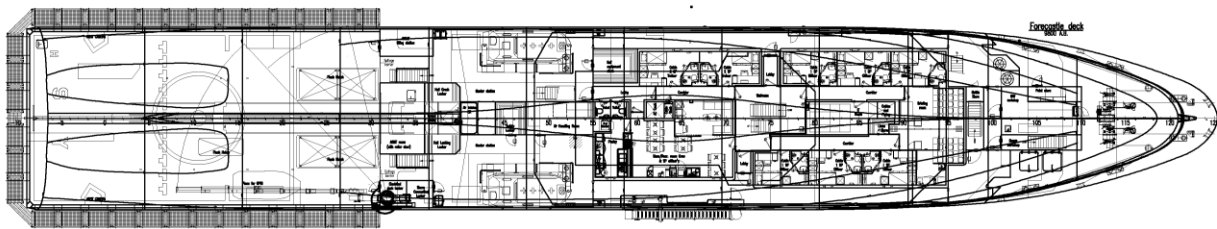
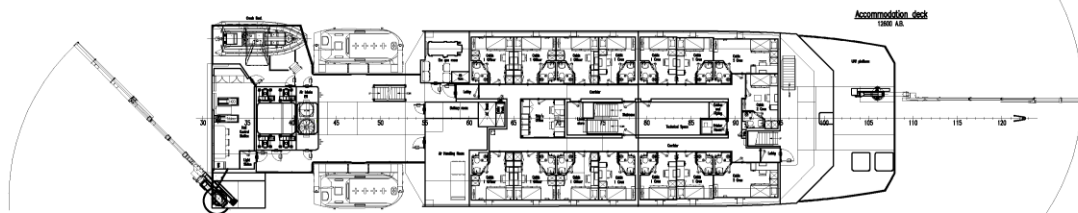
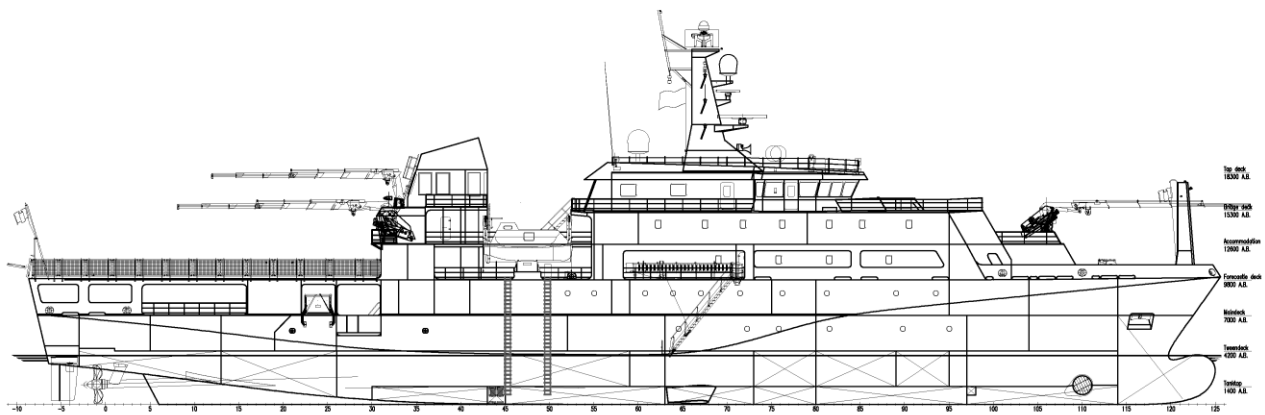
Bridge system	Alphatron bridge, with dual ECDIS Transas
Radar systems	JRC 1x X-band + 1x S-band
DP-system	Kongsberg DP, IMO Class 0
GMDSS	areas A1, A2 and A3
Comms	Iridium, VSAT, SAR signal dir. finder
Flight deck COMMS	Thales FOCON network with wireless flight-deck communications

AVIATION (TRAINING) FACILITIES

Flight deck, for helicopter types	MRH90, MH60R and EC135
Take-off and landing	day and night, up to top of Sea State 3
Lighting and visual aids	AGI, NVG-compatible
Secure-and-traverse syst.	Indal Technologies ASIST
Re-fueling	on-deck, and HIFR
Aviation radar	Terma Scanter 6002, low-level air & surface radar, 2D X-band, stabilised
Helicopter emergency equipm.	crash kit, crash boat, helic. flotation bags
Unmanned Aviation syst.	Prepared for UAS, independent of flight deck

DAMEN

MULTI-ROLE AVIATION TRAINING VESSEL 2300



DAMEN

DAMEN SHIPYARDS GROUP

Avelingen-West 20
4202 MS Gorinchem
The Netherlands

P.O. Box 1
4200 AA Gorinchem
The Netherlands

phone +31 (0)183 63 99 22
fax +31 (0)183 63 21 89

info@damen.com
www.damen.com

© No part of the leaflet may be reproduced in any form, by print, photo print, microfilm, or any other means, without written permission from Damen Shipyards Group