



DAMEN OFFSHORE PATROL VESSEL 950

MAI 1105 - STEFAN CEL MARE

GENERAL

YARD NUMBER	555056
DELIVERY DATE	September 2010
BASIC FUNCTIONS	Patrol the maritime border of Romania and the European Union
CLASSIFICATION	Bureau Veritas I ✕ HULL ✕ MACH, Special service / Patrol boat, Unrestricted Service, ✕AUT-UMS
FLAG	Romanian
OWNER	General Inspectorate of the Border Police, Romania

DIMENSIONS

LENGTH O.A.	66.00 m
LENGTH B.P.P.	64.05 m
BEAM MLD.	10.25 m
DEPTH MLD.	4.70 m
DRAUGHT SUMMER	2.90 m
DISPLACEMENT (SUMMER)	925 t

TANK CAPACITIES

BALLAST WATER	69 m ³
FUEL OIL	149 m ³
POTABLE WATER	32 m ³
DISPERSANT	1 m ³

PERFORMANCES (TRIALS)

SPEED (AT 2.90 M DRAUGHT)	20.6 kn
---------------------------	---------

PROPULSION SYSTEM

MAIN ENGINES	2x MTU 16V 4000 M73
PROPULSION POWER	2x 2560 kW at 1970 rpm
PROPELLERS	2x 2300 mm, CPP
BOW THRUSTER	1x 160 kW, 990 mm, FPP

AUXILIARY EQUIPMENT

GENERATOR SETS	3x MAN D2855 LXE30, each 176 ekW at 1500 rpm, 400 V, 50 Hz
EMERG. GENERATOR SET	1x MAN D0824LE201, 80 ekW at 1500 rpm, 400 V, 50 Hz

DECK LAY-OUT

ANCHOR MOORING WINCH	1x Electric-hydraulic, with two warping heads
CAPSTANS	2x Electric, each 5 t pull
FAST RESCUE CRAFT	1x 6.7 m, 260 HP diesel engine, duo prop.

ACCOMMODATION

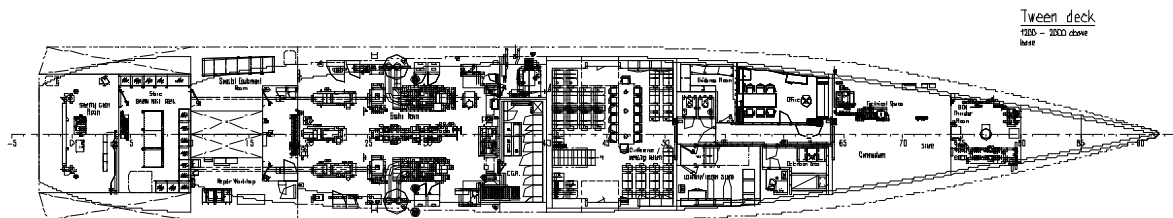
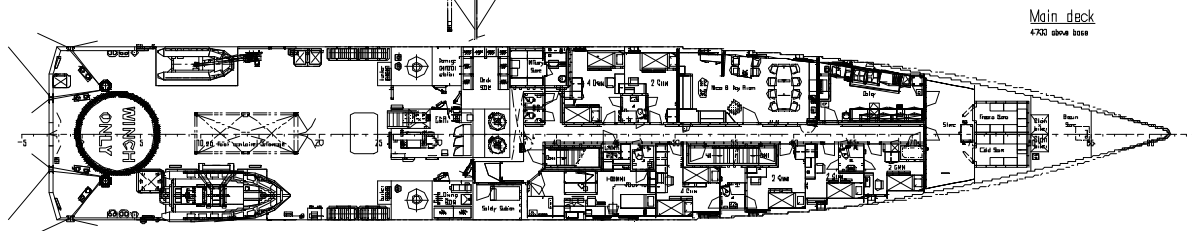
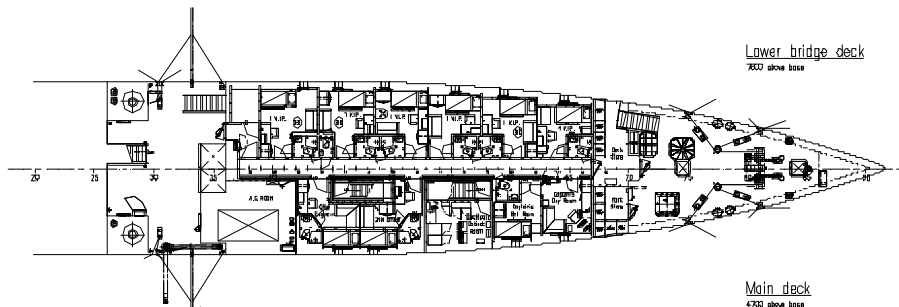
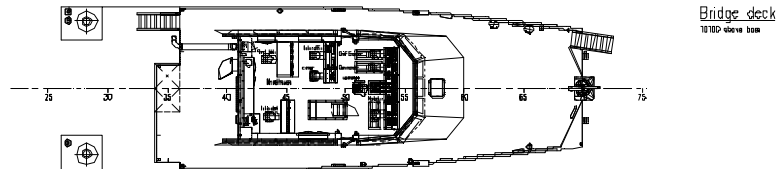
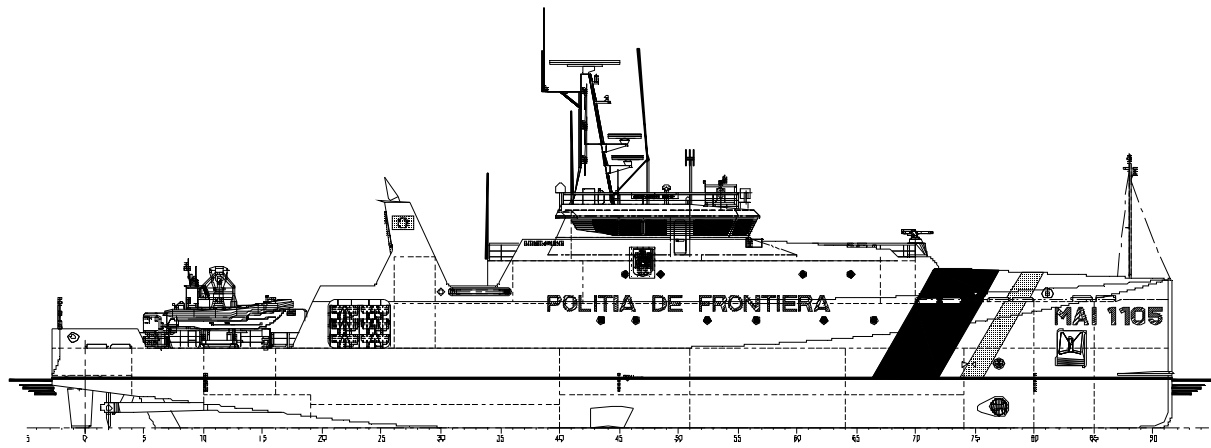
CREW	19 persons
PASSENGERS	6 persons
SURVIVORS OR SIMILAR	75 persons

NAUTICAL AND COMMUNICATION EQUIPMENT

RADAR SYSTEM	2x X-band
GMDSS	Area A3

COMBAT AND SURVEILLANCE SYSTEMS

SURVEILLANCE RADAR	1x Terma Scanter 2100
EO/IR SYSTEM	1x FLIR Talon
WEAPONS	1x Oto Melara 12.7 mm turret gun



DAMEN OFFSHORE PATROL VESSEL 950

MAI 1105 - STEFAN CEL MARE

DAMEN

DAMEN SHIPYARDS GORINCHEM

Member of the DAMEN SHIPYARDS GROUP



Industrieterrein Avelingen West 20
4202 MS Gorinchem

P.O. Box 1
4200 AA Gorinchem
The Netherlands

phone +31 (0)183 63 99 11
fax +31 (0)183 63 21 89

info@damen.nl
www.damen.nl