



DAMEN MODULAR MULTI CAT 2210 "TELESTO"

GENERAL

Yard number	523043
Basic functions	The Damen Modular Multi Cat 2210 is a multipurpose vessel for coastal, sheltered/inland water services, built in steel derived from standard design
Description	The entire hull of the Vessel consists of modules, some of these as container sized units. These modules are called Damen Modular Barges and can be coupled together with a class approved coupling system, the Damen Link. Because of this modular system, the entire Vessel can be transported by ship, truck or train to her final place of destination and assembled locally.
Classification	Bureau Veritas/St. Vincent flag Class I • Hull • Mach, Special Service / Workboat / Caspian Sea / Coastal area outside Caspian Sea / AUT-UMS

DIMENSIONS

Length o.a.	22.50 m
Length pontoon	20.70 m
Beam o.a.	10.10 m
Depth at sides	1.80 m
Draught (empty)	0.85 m
Draught (shallow operation)	1.00 m

CAPACITIES

Fuel	8.70 m ³
Fresh water	1.00 m ³
Sewage	2.00 m ³
Max. deck load	6.80 t/m ²
Cargo deck area (approx.)	46 m ²
Max. cargo capacity	20 t

PERFORMANCES (approx.)

Speed (deep water)	7 kn
Speed (shallow operation)	3 kn
Bollard pull (deep water)	6 t
Bollard pull (shallow operation)	3 t

PROPULSION AND STEERING SYSTEM

Propulsion type	2 x diesel driven deck mounted hydraulically driven rudder propeller
Main Engine	2x Volvo Penta D7CTA – 265hp
Total power	390kW
Steering capability	2x 65° fore and aft

PRIMARY SHIP SYSTEMS

Deckwash / fifi pump	2x (1 fixed/1 portable)
----------------------	-------------------------

ELECTRICAL SYSTEM

Network	24 V / 230 V / 400 V
Main generator set	1 x 32 kVA

DECK LAY-OUT

Heila Deck crane	1x HLRM 65-3S
Hydraulic main winch	1 x 30 t
Anchor	2x 180 kg
Anchor winch	1x
Bollard (double)	4x

LIFE SAVING EQUIPMENT

Life buoy	2x
Life jacket	4x
Fire extinguisher	7x
First-aid kit	1x
Life rafts (6 pax)	2x

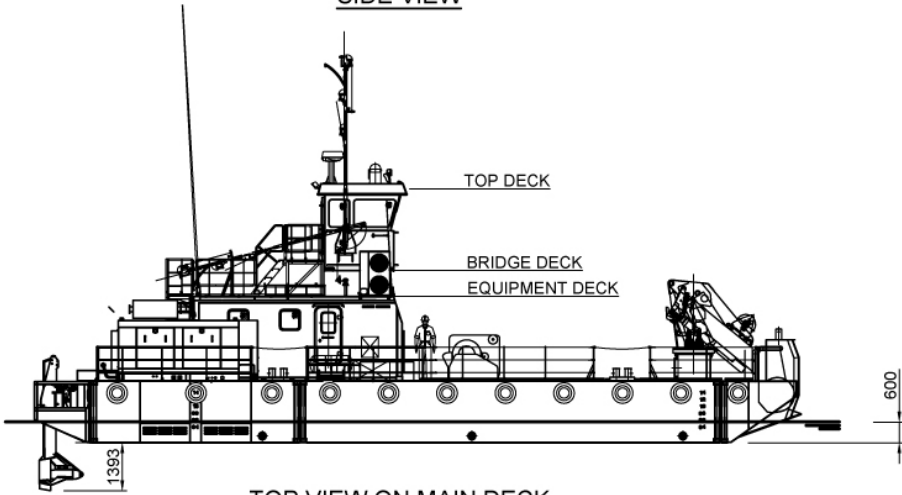
SUPERSTRUCTURE

Accommodation as per mlc2006	2 pax
Toilet	1x
Shower	1x
Wheelhouse	Efficient layout, unobstructed view in all directions, good overview vessel.
Fan coil air-conditioning unit with heating unit inside	4x

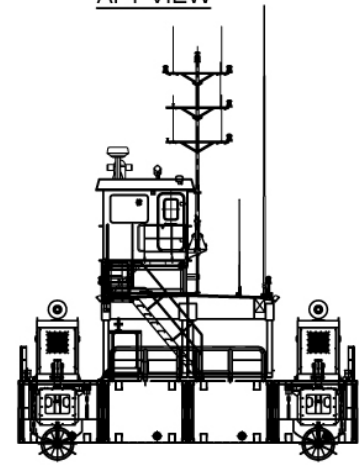
NAUTICAL AND COMMUNICATION EQUIPMENT

Navigation lights	All necessary navigations lights are installed.
GMDSS A2 unit	1x
Search light	1x
Horn	1x
Radar	1x
GPS	1x
Compass	1x
Echosounder	1x
Barometer	1x
Thermometer	1x

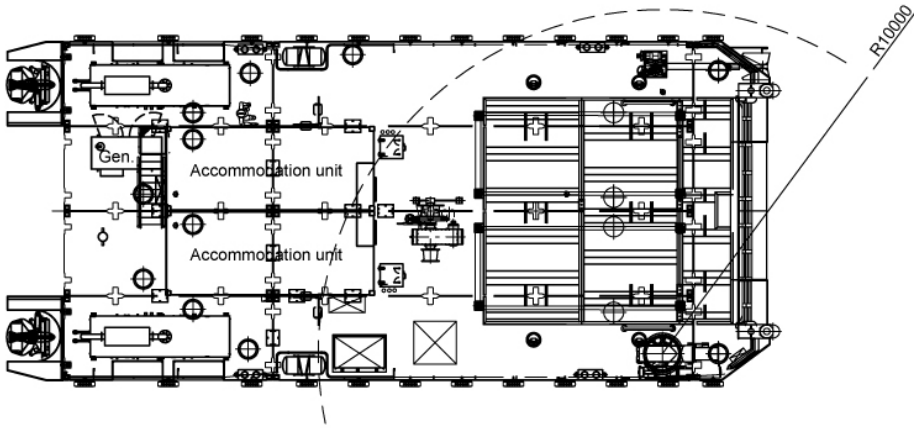
SIDE VIEW



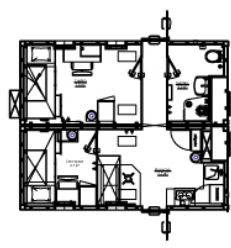
AFT VIEW



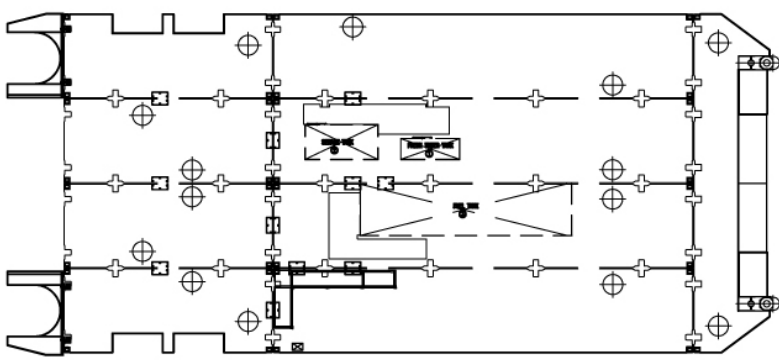
TOP VIEW ON MAIN DECK



ACCOMMODATION



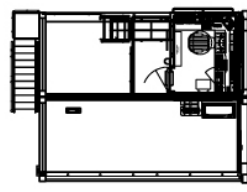
TOP VIEW BELOW MAINDECK



EQUIPMENT DECK



BRIDGE DECK



TOP DECK



DAMEN MODULAR MULTI CAT 2210

"TELESTO"



DAMEN SHIPYARDS GORINCHEM

Member of the DAMEN SHIPYARDS GROUP 

Industrieterrein Avelingen West 20
4202 MS Gorinchem

P.O. Box 1
4200 AA Gorinchem
The Netherlands

phone +31 (0)183 63 99 11
fax +31 (0)183 63 21 89

info@damen.com
www.damen.com

© No part of the leaflet may be reproduced in any form, by print, photo print, microfilm, or any other means, without the written permission from Damen Shipyards Gorinchem.