



MODULAR FLOATING DRYDOCKS

LONG TERM COST CONTROL IN SHIP REPAIR

DAMEN

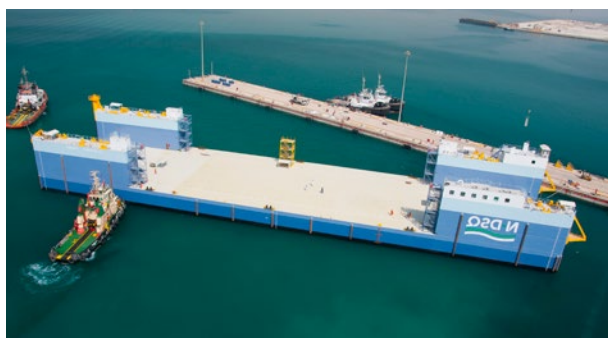
VESSELS DO NOT BELONG IN DRYDOCKS. SHIP OWNERS ARE ALWAYS LOOKING FOR WAYS TO MINIMISE COSTS, OPTIMISE MAINTENANCE AND KEEP VESSELS IN OPERATION.



JUST THE WAY YOU WANT IT

Our modular and monohull floating drydocks are designed to meet your specific needs.

Our drydocks are built to last! Proven technology is applied to deliver a construction with the longest possible life. What's more, the modular nature of the construction means you can remove bottom sections piece-by-piece for inspection and maintenance on board the dock itself. This way, you have full control of your in-house maintenance programme for minimal downtime.



LOAD OUT & RECOVERY DRYDOCK

Following increased demand for heavy lift and ship-to-shore transport, all our designs can be tailored to incorporate a load-out capacity relative to the size of the drydock. If such capabilities are the main aim, we can supply a LOR-Drydock (Load-Out and Recovery). The product is equally suited to facilitation of onshore repairs via a transfer area.

EFFICIENT

We have put our years of experience in ship repair and maintenance into innovative and efficient designs. Docking in a Damen drydock requires minimal preparation and only a few man hours.

The side walls are designed to offer flexibility in the placing of cranes, generator sets, control rooms and other equipment.



EASY TO OPERATE

Because of the clear layout of the control panel the drydock is easy to operate.



BUSINESS AS USUAL

With our modular approach, looking after your drydock is no different to everyday business. When the bottom sections are placed in the dock they can easily be inspected and maintained – in precisely the same manner as your clients' vessels.


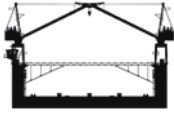



PROVEN TECHNOLOGY

MAXIMUM FLEXIBILITY



MARITIME KNOW-HOW

At the core of our drydock designs is an understanding of the needs of today's maritime industry. We provide the means to manage a modern repair project, facilitating fast vessel-to-shore transport and reduced waiting times, ensuring sufficient capacity for time-leading items.

					
ENTRANCE WIDTH (m)	55 or 120 New Panamax or Drilling Rigs	36 Panamax	26 Seawaymax	20	20
LENGTH (m)	120 - 240	180 - 360	80 - 180	50 - 110	50 - 90
KEELBLOCK DRAFT (m)	9.0	8.0	6.0	6.0	6.0
LIFTING CAP. (t)	12,000 - 23,000	8,500 - 15,500	3,500 - 9,000	1,500 - 4,500	1,000 - 4,000
CENTER LINE CAP. (t/m)	100	100	50	50	50
DOCK FLOOR LOAD (t/m ²)	15	15	10	10	10



MAXIMUM FLEXIBILITY

A drydock can be designed to meet your current needs, but what about the future? Our modular range can be adapted as your business grows. An additional section can easily be added - even afloat - when the need arises. This flexibility is also beneficial for residual value.

DAMEN

DAMEN SHIPYARDS GORINCHEM

Member of the DAMEN SHIPYARDS GROUP



Avelingen-West 20
4202 MS Gorinchem

P.O. Box 1
4200 AA Gorinchem
The Netherlands

phone +31 (0)183 63 99 11
fax +31 (0)183 63 21 89

info@damen.com
www.damen.com