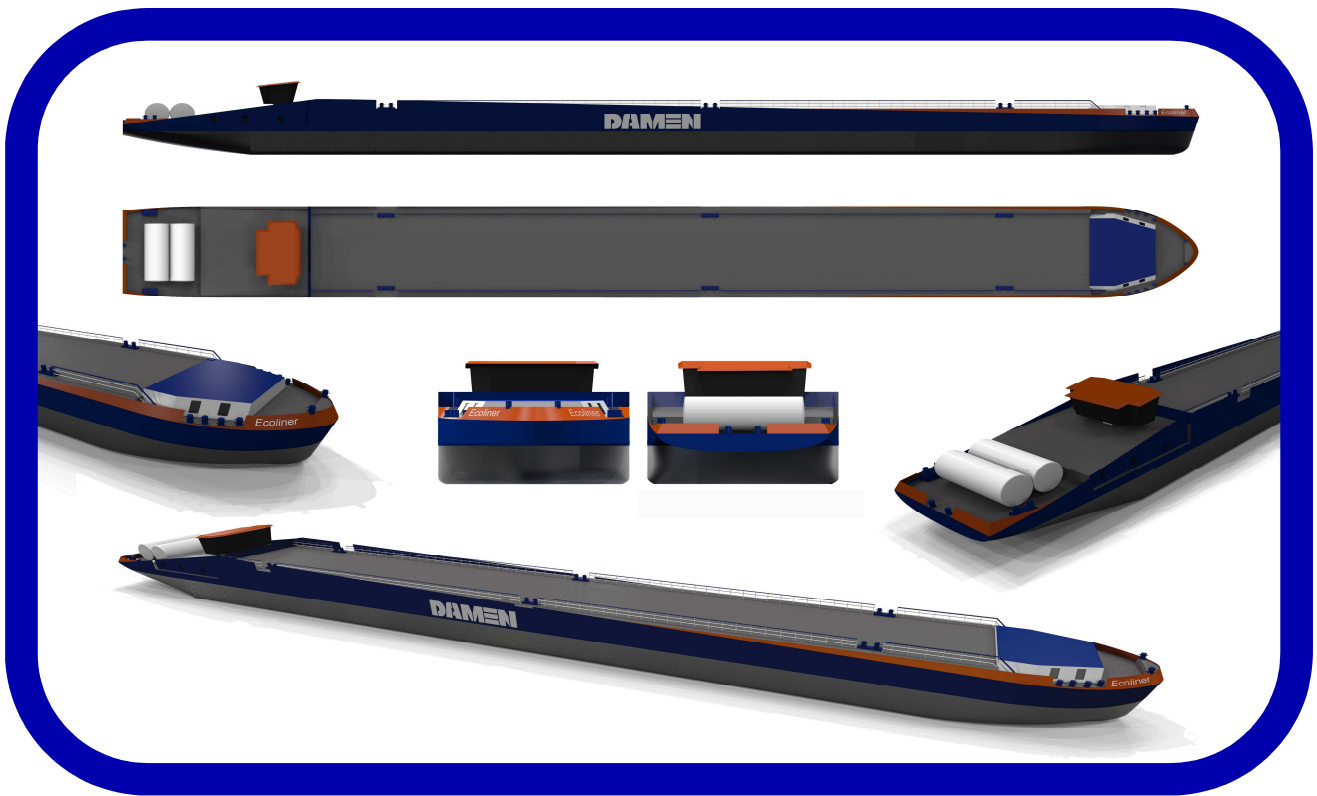


Damen ECOLINER Type C

"Ecoliner"



General

Building Yard	: Bodewes Binnenvaart B.V.
Yard Number	: 947
Delivery	: December 2013
Execution	: Chemical Tanker type C
Classification	: Bureau Veritas

Main Dimensions

Length o.a.	: 110 m
Breadth mld.	: 11,45 m
Depth	: 5,75 m
Draft max.	: 3,65 m
Deadweight at 3,30 m.	: 2600 t.
Cargo tank cap. (100%)	: 3770 m ³
Airdraft	: 4,65 m

Tank capacities

Gas Storage approx.	: 55 m ³
Freshwater appr. (total)	: 14 m ³
Lubricating oil appr. (total)	: 2 m ³
Dirty oil (aft) appr.	: 2 m ³
Ballast tanks aft. appr.	: 100 m ³
Ballast tanks midship appr.	: 1390 m ³
Ballast tanks forship appr.	: 120 m ³

Cargo zone

Cargo tanks	: 10 pcs. cont. appr. 377 m ³ each tank (100%)
Slop tanks	: 2 pcs. approx. 28 m ³
Loading pressure	: 50 kPA
Max. loading density	: 1,0 kg/dm ³
Cargo pumps	: 2 pcs. Kampers cargopumps type 2C232 / 100LHE 500 m ³ /h
Deck piping	: Galvanised piping single part cargo system

Owner : QaGroup

Propulsion system

Gas generators	: 4 pcs. Stamford with gas engine
Capacity	: 4 x 280 kW
Thrusters	: Z-drives or Pods
Capacity	: 2 x 500 kW
Bowthruster	: Channel
Capacity	: 400 kW

Machinery

Ventilation	: E.R. Fore and Aft and Cargo tanks
Overpressure	: Accomodation fore- and aft, Wheelhouse
Anchor winches	: Anchors 2x1150+1x1150kg
Pumps (general)	: Self priming centrifugal pumps
Fire-fighting installation	: FM200/Novac

Accommodation and wheelhouse

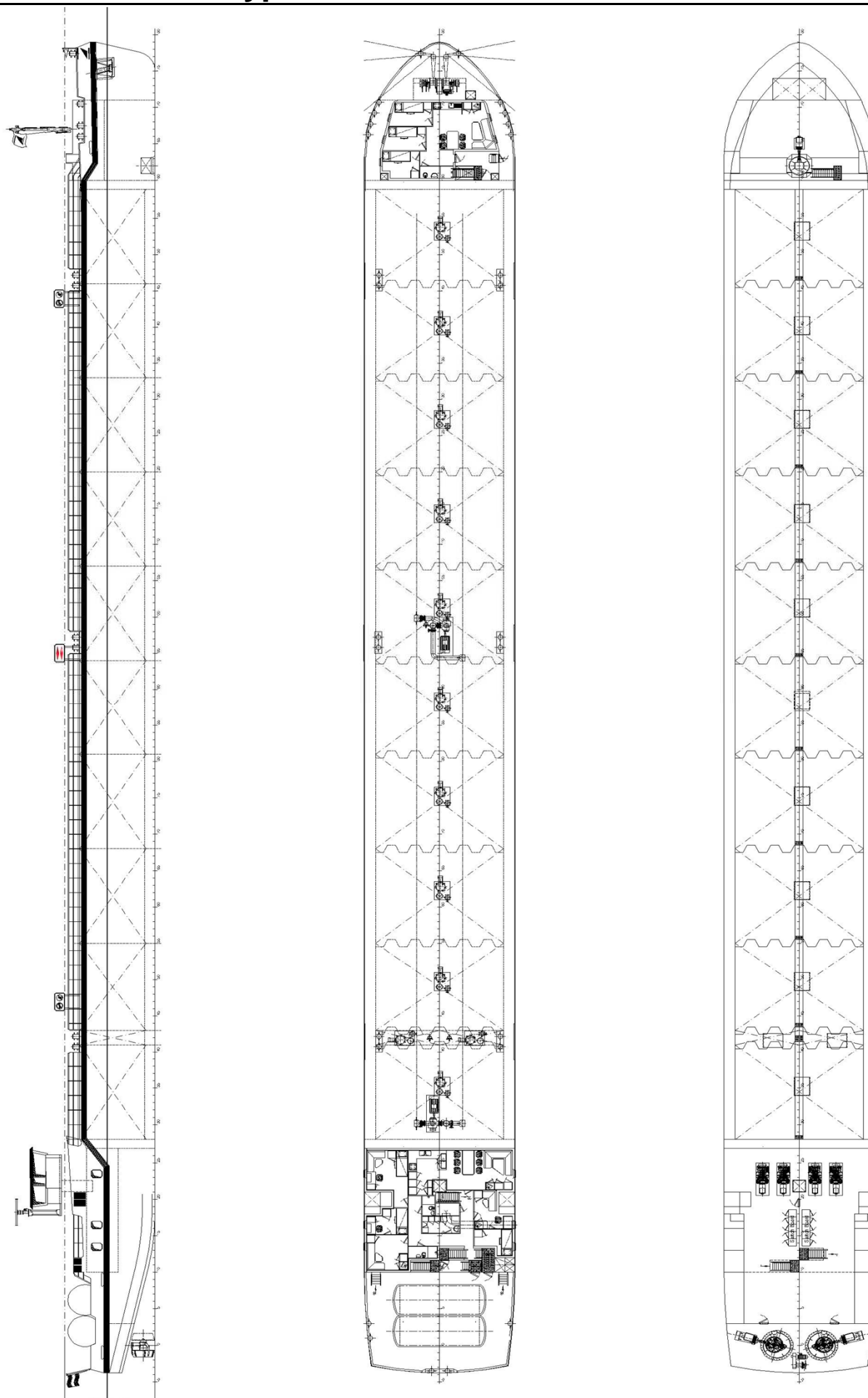
Wheelhouse	: Large wheelhouse with lowerable top part, installed on wheelhouse lift.
Accommodation	: Aft: Entrance, toilet, Messroom with Kitchen, Hall, Bathroom and 3 Bedrooms
	: Fore: Messroom / Kitchen, Bathroom and 3 Bedrooms

Electrical installation

Power current	: 230/400/480 V, 50/60 Hz
DC Current	: 24V DC

Navigation equipment

Radar	: 1 pce. Type River radar
VHF	: 2 pcs. Mariphones
Combi Pilot	: Radio Zeeland/Alphatron
Intercom	: Radio Zeeland/Alphatron
Echosounding	: Radio Zeeland/Alphatron
Tachograph	: Nufatron type NT-01
Chartplotter	: Tresco
AIS	: Shiptron



BODEWES BINNENVAART B.V.

Rijndijk 19, 6566 CG Millingen aan de Rijn - The Netherlands - Tel.: +31(0) 481-438238 Fax: +31(0) 481-433166 e-mail: info@bodewes-binnenvaart.nl

Member of the Damen Shipyards Group