



DAMEN STAN TENDER[®] 1905 "LNG EXPRESS"

GENERAL

YARDNUMBER	542409
OWNER	Fratelli Neri S.p.A.
FLAG	Italy
DATE OF DELIVERY	January 2011
HULL MATERIAL	Steel
SUPERSTRUCTURE	Aluminium
BASIC FUNCTIONS	Crew supply, Pilot and Patrol duties
CLASSIFICATION	RINA C * Hull ● MACH special services, Coastal Area

DIMENSIONS

LENGTH O.A.	19.80 m
BEAM O.A.	5.30 m
DEPTH AT SIDES	2.70 m
DRAUGHT MAX	1.67 m

TANK CAPACITIES

FUEL	6.15 m ³
FUEL OIL HEADER TANK	0.35 m ³
FRESH WATER	0.44 m ³
WASTE WATER	0.33 m ³

PERFORMANCE (TRIALS)

SPEED	24.0 kn.
-------	----------

PROPULSION SYSTEM

MAIN ENGINES	2 x Caterpillar C32 ACERT B rating
TOTAL POWER	1640 bkW at 2100 rpm
GEARBOXES	2 x Reintjes WVS 430/1
PROPELLERS	2 x Fixed pitch propellers

ELECTRICAL EQUIPMENT

GENERATOR SETS	1 x 16.0 kW, 20.0 kVA
NETWORKS	24 d.c., 230V / 400V 50 Hz

DECK LAY-OUT

ANCHOR EQUIPMENT	1 x 48.0 kg, Pool TW
FENDERING SIDE	Rubber with hacorit top
FENDERING BOW	M-shaped rubber fender and foam filled bow fender w/ bow skirt

AUXILIARY SYSTEMS

A.C. SYSTEM	60.000 BTU
E.R. VENTILATION	2 x 12,000 m ³ / hr
BILGE PUMP	Reikon 10 m ³ / hr at 2 bar

LIFE SAVING EQUIPMENT

LIFE BUOYS	3
LIFE JACKETS	14
LIFE RAFT	1 x 14 persons Solas type approved
FIRE EXTINGUISHERS	2 x 5 kg CO ₂ , 2 x 6 kg dry powder, 1 x 9 l foam

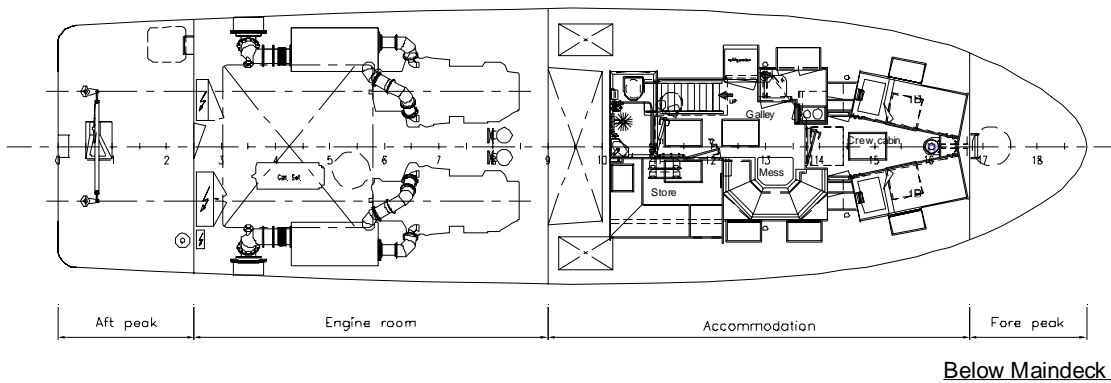
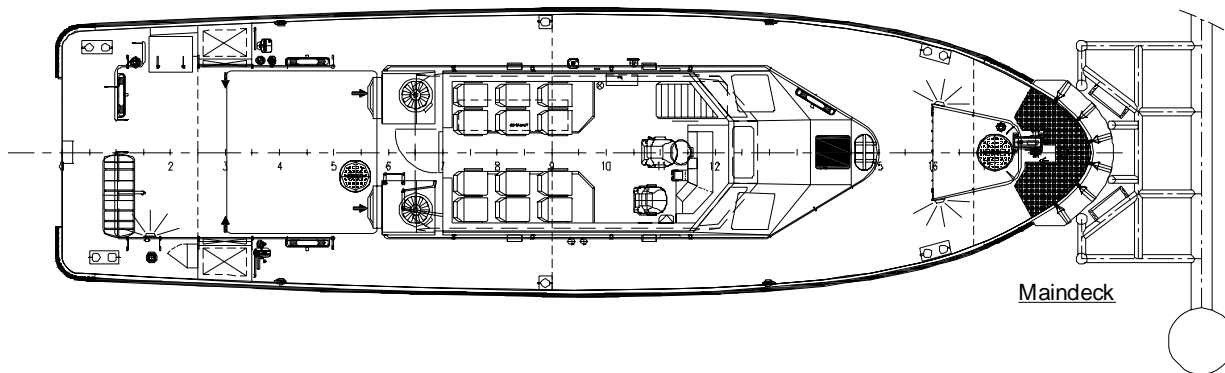
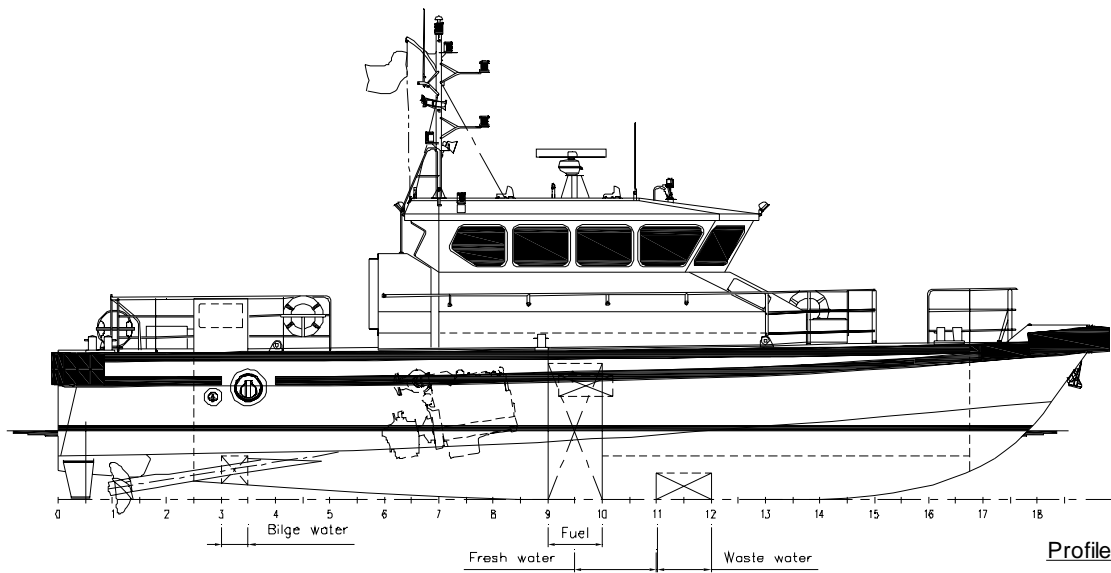
ACCOMMODATION

CREW	2 persons
PASSENGERS	12 persons (seats)

NAUTICAL AND COMMUNICATION EQUIPMENT

SEARCHLIGHT	1 x 250W 24V
COMPASS	Ritchie HB 71
ECHO SOUNDER	JRC -JFE 380
VHF	Sailor RT 6210
VHF DSC-A	Sailor RT 5022
RADAR	JRC JMA5212
GPS-	JRC JLR 7500
NAVTEX	JRC NCR-333
LOUDHAILER / INTERCOM	Alphacall, healing speaker HP15

GMDSS A1 compliant



DAMEN STAN TENDER[®] 1905

"LNG EXPRESS"

DAMEN

DAMEN SHIPYARDS GORINCHEM

Member of the DAMEN SHIPYARDS GROUP



Industrieterrein Avelingen West 20
4202 MS Gorinchem

P.O. Box 1
4200 AA Gorinchem
The Netherlands

phone +31 (0)183 63 99 11
fax +31 (0)183 63 21 89

info@damen.nl
www.damen.nl