



STAN PATROL 4207

STANDARD

GENERAL

Hull material	Aluminium
Superstructure	Aluminium
Basic functions	Patrol duties, maritime safety, securing economical waters, search and rescue
Classification	Bureau Veritas I ✱ Hull • MACH • AUT UMS Light Ship / Fast Patrol Boat Sea Area 3

DIMENSIONS

Length overall	42.8 m
Beam overall	7.1 m
Depth at side	3.8 m
Draught max	2.5 m
Crew	Up to 18 persons

TANK CAPACITIES

Fuel oil	29.8 m ³
Fresh water	6.3 m ³
Waste water (black)	2.1 m ³
Waste water (grey)	6.1 m ³
Dirty oil/ bilge water	1.3 m ³

PERFORMANCES

Speed	Up to 26.5 kn
Range at max speed	700 nm

PROPULSION SYSTEM

Main engines	2x Caterpillar/ MTU
Total Power	Up to 4700 bkW
Gearboxes	2x Reintjes
Propulsion	2x controllable pitch propellers
Bow thruster	1x 75 kW

ELECTRICAL EQUIPMENT

Network	24V dc, 230V/400V 50 Hz a.c.
Generator sets	1x 86.0 ekW – 107.0 kVA

DECK LAY-OUT

Anchor equipment	1x HPP Pool TW, chain and line
Anchor winch	1x electrically driven
Slipway	

SHIP SYSTEMS

General service pump	1x electrically driven
Fuel separator	1x dynamic
Engine room ventilation	2x 26.500 m ³ /hr
Fire extinguishing	Hand operated fire extinguishers. Fixed fire-fighting system in engine room (Novec 1230)
Stabilizer system	Hydraulically driven

ACCOMMODATION

Main deck	Cabins, officers room, galley and mess, sanitary spaces and stores
Below main deck	Cabins, sanitary spaces and store
Air conditioning	Up to 325.000 BTU/hr

NAUTICAL AND COMMUNICATION EQUIPMENT

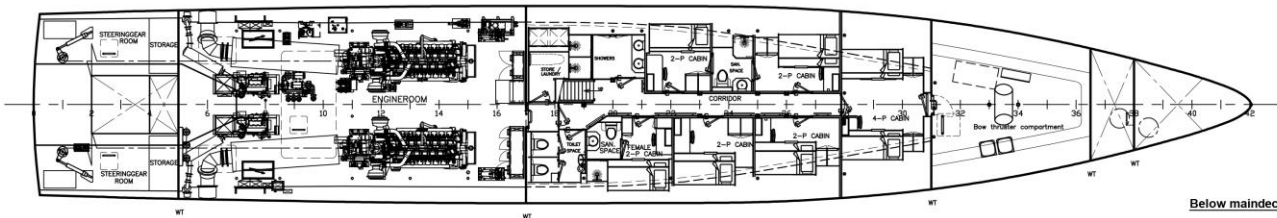
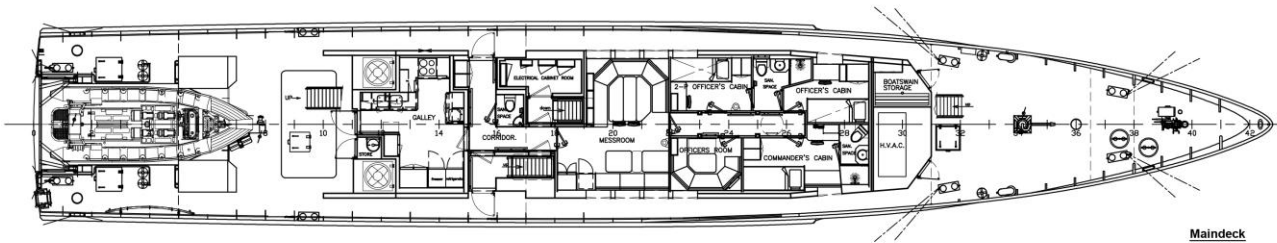
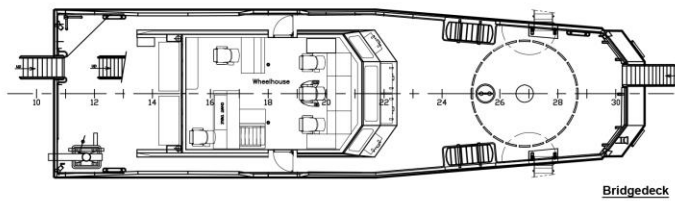
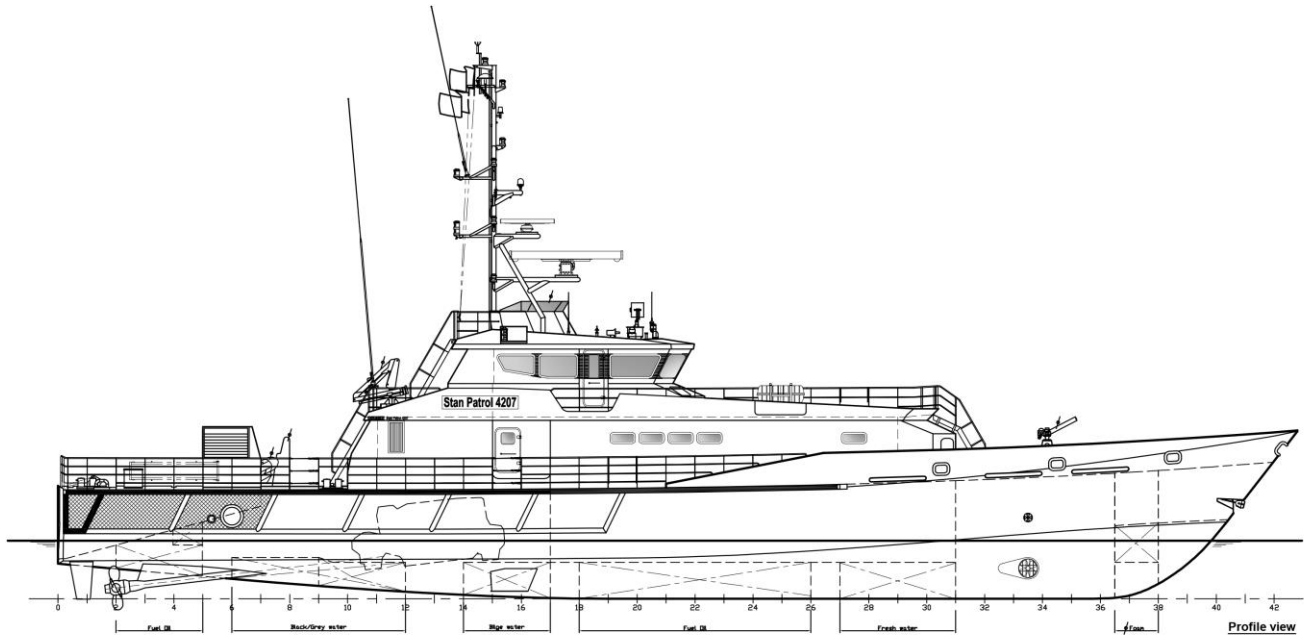
Searchlight	1x
Radar	1x X-band, 1x S-band
ECDIS	1x
GPS	1x
AIS	1x
Compass	1x Magnetic
Autopilot	1x
Echo sounder	1x
CCTV system/loudhailer	1x
External communications	GMDSS A2
Weather system	1x

OPTIONAL

Bilge water separator	
Fresh water maker	
Sewage treatment plant	
Foldable deck crane	
Daughter craft	
Second searchlight	
Second radar	
Chart plotter	
Night vision camera	
External communication	GMDSS A3
Fleet broadband	
Military equipment/ballistic protection	

STAN PATROL 4207

STANDARD



ITEMS MARKED  ARE OPTIONAL EQUIPMENT

DAMEN

DAMEN SHIPYARDS GROUP

Items marked with  are optional equipment

Avelingen-West 20
4202 MS Gorinchem
The Netherlands

P.O. Box 1
4200 AA Gorinchem
The Netherlands

phone +31 (0)183 63 99 22
fax +31 (0)183 63 21 89

info@damen.com
www.damen.com

© No part of the leaflet may be reproduced in any form, by print, photo print, microfilm, or any other means, without written permission from Damen Shipyards Group