



DAMEN STAN PATROL[®] 1605

"SPA 1605 - BURDI, SLOUG, BESHER, IZREG"

GENERAL

YARDNUMBER	532262-65
OWNER	Libyan Naval Forces
DATE OF DELIVERY	November 2012
HULL MATERIAL	Aluminium
SUPERSTRUCTURE	G.R.P.
BASIC FUNCTIONS	Crew / Patrol duties

DIMENSIONS

LENGTH O.A.	16.15 m
BEAM O.A.	5.40 m
DEPTH AT SIDES	1.85 m
DRAUGHT MAX	0.85 m

TANK CAPACITIES

FUEL OIL	2.00 m ³
FRESH WATER	0.25 m ³
WASTEWATER	0.20 m ³

PERFORMANCES (TRIALS)

SPEED	30.0 kn.
-------	----------

PROPULSION SYSTEM

MAIN ENGINES	2x Caterpillar C18
TOTAL POWER	1000 bkW (1340 bhp) at 2100 rpm
CLUTCH	Twindisk HPTO 244
WATERJETS	Rolls Roys FF 375S, waterjets

ELECTRICAL EQUIPMENT

NETWORK	24V d.c., 220V
GENERATOR SET	1x 11 bkW/ 13.5 kVA, 50 Hz

DECK LAY-OUT

ANCHOR EQUIPMENT	1x 24 kg H.H.P.	
ANCHOR WINCH	1 Electrical winch Muir, type VRC RB 1200	
FENDERING	Foam fender	
DECK SPACE AFT	8.8 m ²	95 sq.ft.
DECK SPACE FWD	5.6 m ²	60 sq.ft.

AUXILIARY EQUIPMENT

BILGE PUMP	Electric 24V
------------	--------------

LIFE SAVING EQUIPMENT

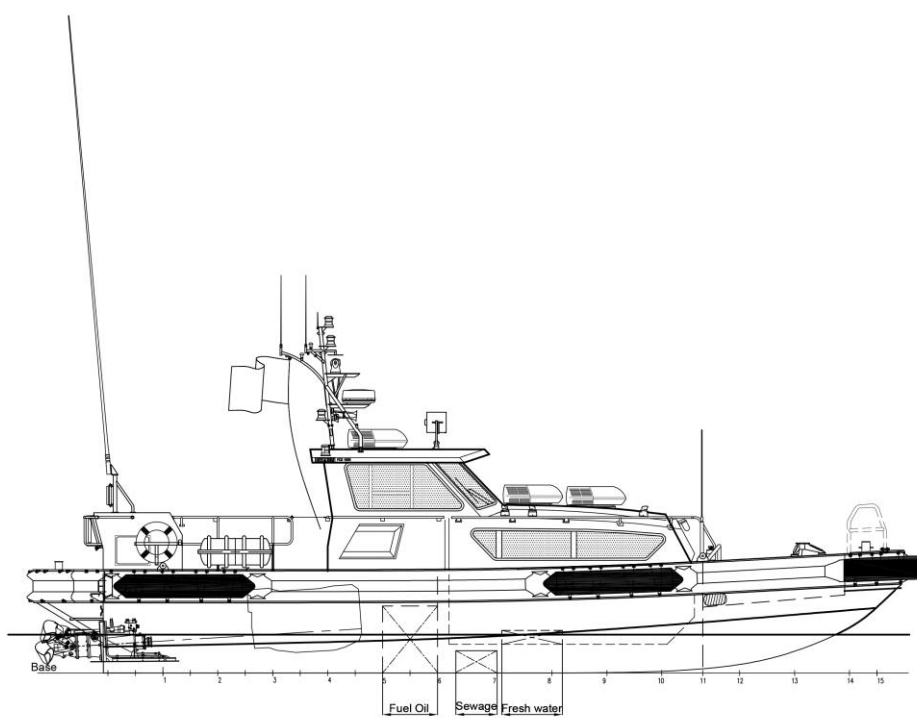
LIFE BUOYS	2
LIFE JACKETS	6
LIFE RAFTS	1x 6 persons
FIRE EXTINGUISHER	1x 2 kg CO ₂ , 2x 6 kg dry powder

ACCOMMODATION

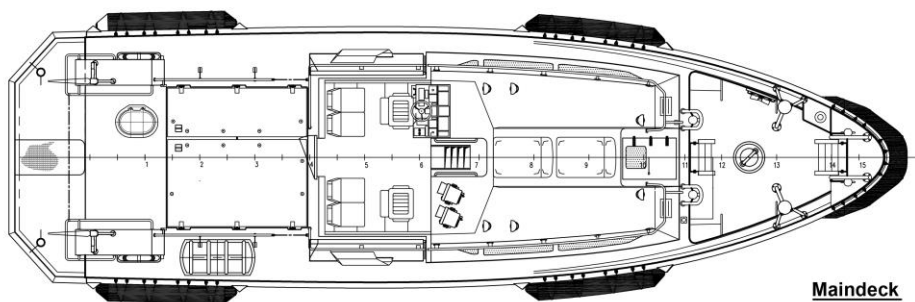
PASSENGERS	6 persons
WHEELHOUSE	1 motion damping seat 1 navigator seat 4 coach type seats 3 bench, toilet and shower Air-conditioning in the wheelhouse and crew accommodation.
BELOW MAIN DECK	
AIR CONDITIONING	

NAUTICAL AND COMMUNICATION EQUIPMENT

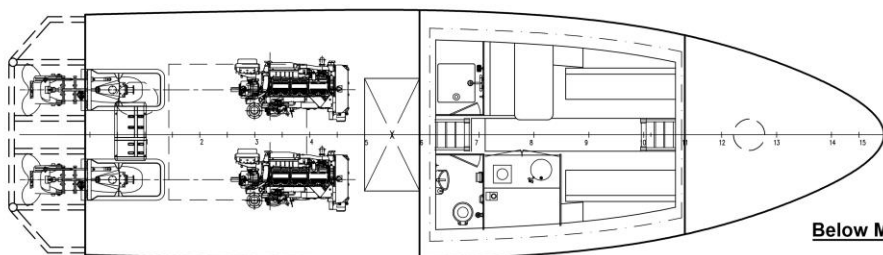
SEARCHLIGHT	1x Pesch 500W 24V
COMPASS	Ritchie type helmsman
ECHO SOUNDER	Raytheon ST60
VHF'S	2x Sailor RT 2048
RADARS	2x Furuno FR 1832 Mk 2
GPS	Furuno GP 32
SBS	Furuno FS-1562-15
AIS	AIS transponder
CAMERA	Optical nightvision camera



Profile



Maindeck



Below Maindeck

DAMEN STAN PATROL[®] 1605

"SPA 1605 - BURDI, SLOUG, BESHAR, IZREG"

DAMEN

DAMEN SHIPYARDS GORINCHEM

Member of the DAMEN SHIPYARDS GROUP



Industrieterrein Avelingen West 20
4202 MS Gorinchem

P.O. Box 1
4200 AA Gorinchem
The Netherlands

phone +31 (0)183 63 99 11
fax +31 (0)183 63 21 89

info@damen.nl
www.damen.nl