



STAN PATROL 1605

STANDARD

GENERAL

| | |
|-----------------|--|
| Hull material | Aluminium |
| Superstructure | FRP |
| Basic functions | Patrol, surveillance and safety duties |

DIMENSIONS

| | |
|------------------------|-----------------|
| Length overall | 16.5 m |
| Beam overall | 5.4 m |
| Depth at side | 1.8 m |
| Draught max | 0.8 m |
| Crew | Up to 3 persons |
| (industrial) personnel | Up to 4 persons |

TANK CAPACITIES

| | |
|-------------|--------------------|
| Fuel oil | 2.0 m ³ |
| Fresh water | 0.2 m ³ |
| Waste water | 0.1 m ³ |

PERFORMANCES

| | |
|--------------------|---------------|
| Speed | Up to 35.5 kn |
| Range at max speed | 210 nm |

PROPULSION SYSTEM

| | |
|--------------|---------------------------------|
| Main engines | 2x Caterpillar C18 TA/TTA |
| Total Power | Up to 1000 bkW |
| Gearboxes | 2x Twin Disc |
| Propulsion | 2x Rolls Royce FF375S waterjets |

ELECTRICAL EQUIPMENT

| | |
|---------|-------------------------------|
| Network | 24V dc, 230V/400V, 50 Hz a.c. |
|---------|-------------------------------|

DECK LAY-OUT

| | |
|------------------|---------------------------------|
| Anchor equipment | 1x 24 kg Pool TW chain and line |
| Fendering | Foam fender |
| Bowfender | Foam filled |

SHIP SYSTEMS

| | |
|----------------------|---|
| General service pump | 1x manually driven |
| Fire extinguishing | Hand operated fire extinguishers. Fixed fire-fighting system in engine room (Aerosol) |

ACCOMMODATION

| | |
|------------------|--|
| Main deck | Seats for industrial personnel and helmsman seat |
| Below main deck | Seats and toilet |
| Air conditioning | Up to 40.000 BTU/hr |

NAUTICAL AND COMMUNICATION EQUIPMENT

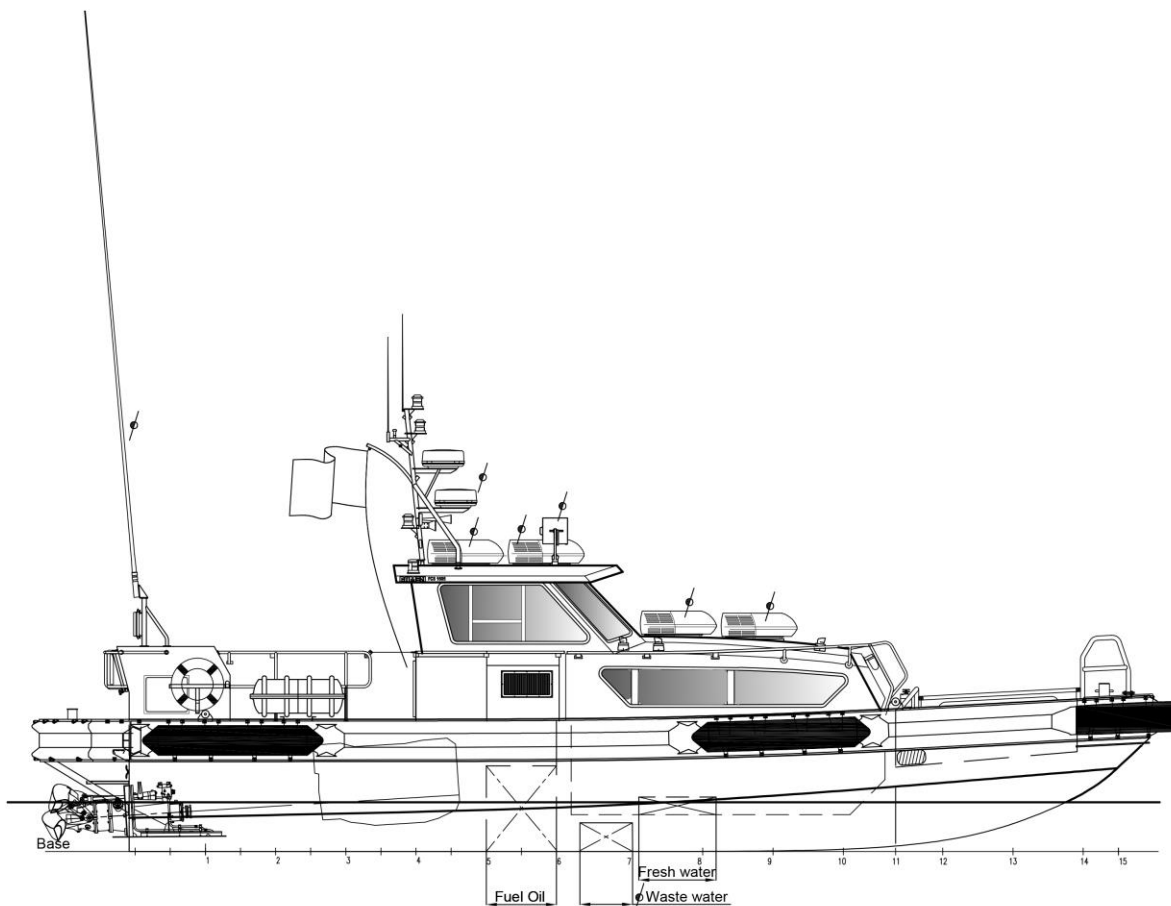
| | |
|------------------------|---------------|
| Searchlight | 1x |
| Radar | 1x |
| GPS | 1x |
| Compass | 1x Magnetic |
| Echo sounder | 1x |
| Internal communication | 1x Loudhailer |
| VHF | 1x |

OPTIONAL

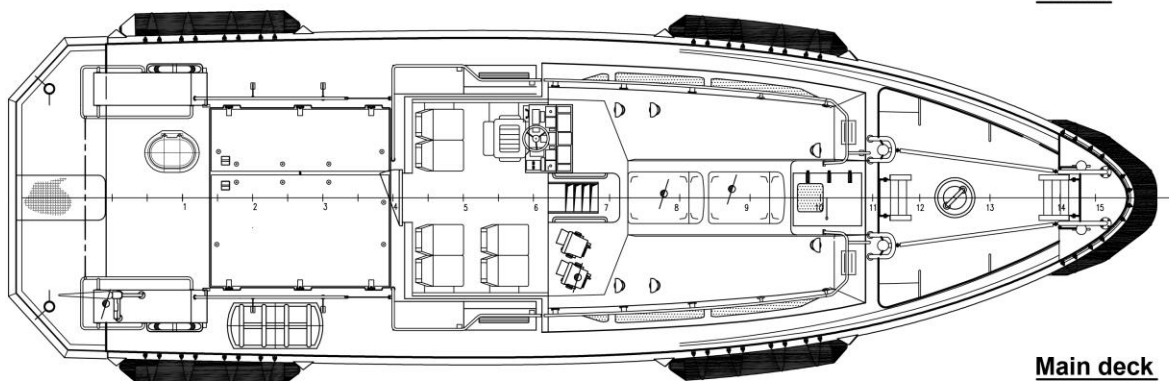
| | |
|--------------------------------|---|
| Classification | Bureau Veritas I ✱ Hull • MACH Light Ship / Fast Utility Vessel Sea Area 2 |
| Electrically driven bilge pump | |
| Engine room ventilation | 2x 10.000 m ³ /hr |
| Generator sets | 1x 11.0 ekW - 13.5 kVA |
| Settee/ pantry | |
| Shower | |
| Second searchlight | |
| Second radar | |
| AIS | |
| External communication | GMDSS A1/A2 |

STAN PATROL 1605

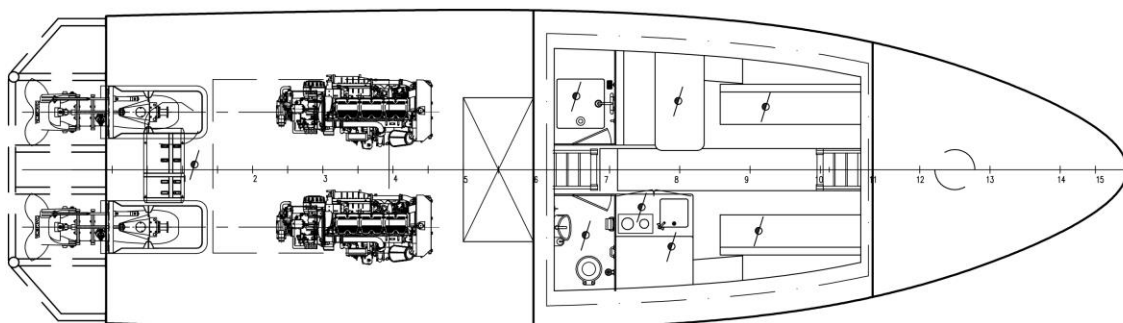
STANDARD



Profile



Main deck



Lower deck



Items marked with  are optional equipment

DAMEN SHIPYARDS GROUP

Avelingen-West 20
4202 MS Gorinchem
The Netherlands

P.O. Box 1
4200 AA Gorinchem
The Netherlands

phone +31 (0)183 63 99 22
fax +31 (0)183 63 21 89

info@damen.com
www.damen.com

© No part of the leaflet may be reproduced in any form, by print, photo print, microfilm, or any other means, without written permission from Damen Shipyards Group