



DAMEN SEARCH AND RESCUE 1906

SELF-RIGHTING & ALL WEATHER

GENERAL

| | |
|-----------------|--|
| HULL MATERIAL | Aluminium |
| SUPERSTRUCTURE | FRP Composite |
| BASIC FUNCTIONS | Search and Rescue |
| DESIGN | KNRM/De Vries Lentsch/DAMEN |
| CLASSIFICATION | Lloyds Register * 100 A1, SSC, Patrol, HSC, G3 [*] LMC Self-righting |

DIMENSIONS

| | |
|----------------|---------|
| LENGTH O.A. | 19.30 m |
| BEAM O.A. | 6.55 m |
| DEPTH AT SIDES | 1.90 m |
| DRAUGHT MAX | 1.10 m |

CAPACITIES

| | |
|---------------------|---------------------|
| FUEL OIL | 4.90 m ³ |
| CREW | 4 |
| SURVIVORS | 120 |
| RANGE AT FULL SPEED | 300 nm |

SPECIAL FEATURES

| | |
|------------------|--|
| STABILITY | Self-righting |
| DAMAGE STABILITY | 2 compartment 50% bottom damage 2 separated engine rooms |

PERFORMANCES (TRIALS)

| | |
|-------------------|----------|
| SPEED | 31 knots |
| MAX. BOLLARD PULL | 7 tons |

PROPULSION SYSTEM

| | |
|--------------|--------------------------------|
| MAIN ENGINES | 2x MTU 8V2000 M84L |
| TOTAL POWER | 1790 kW (2400 bhp) at 2450 rpm |
| GEARBOXES | 2x ZF 2000 |
| PROPULSION | 2x Hamilton 570 |

ELECTRICAL EQUIPMENT

| | |
|---------|-------------------|
| NETWORK | 230/50 Hz, 24V/DC |
|---------|-------------------|

DECK LAY-OUT

| | |
|------------------|--|
| ANCHOR EQUIPMENT | 1x Fortress FX125, 10m chain, 70m line |
| TOWING | Towing bollard on aft deck |
| FENDERING | Custom made 900x450mm foam filled |

LIFE SAVING EQUIPMENT

| | |
|--------------------|---------------------------------------|
| RESCUE PLATFORM | 3.50 m at the stern, hydraulic driven |
| LIFE RAFT | 1x 6 persons |
| FIRE EXTINGUISHERS | 6, CO ² and AFFF types |
| RESCUE | 2x Stretcher transport system |

AUXILIARY EQUIPMENT

| | |
|------------------------|------------------------------------|
| ENGINE ROOM AIR INTAKE | Open during roll-over |
| GENERAL SERVICE PUMPS | 24V submersibles |
| FUEL SYSTEM | 1 Header tank, roll-over proof |
| EXHAUST SYSTEM | Duplex steel, with water injection |

ACCOMODATION

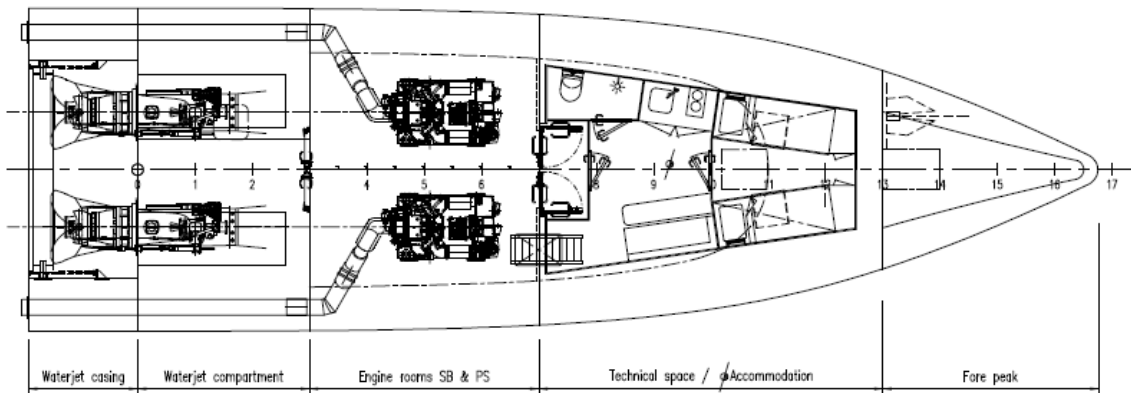
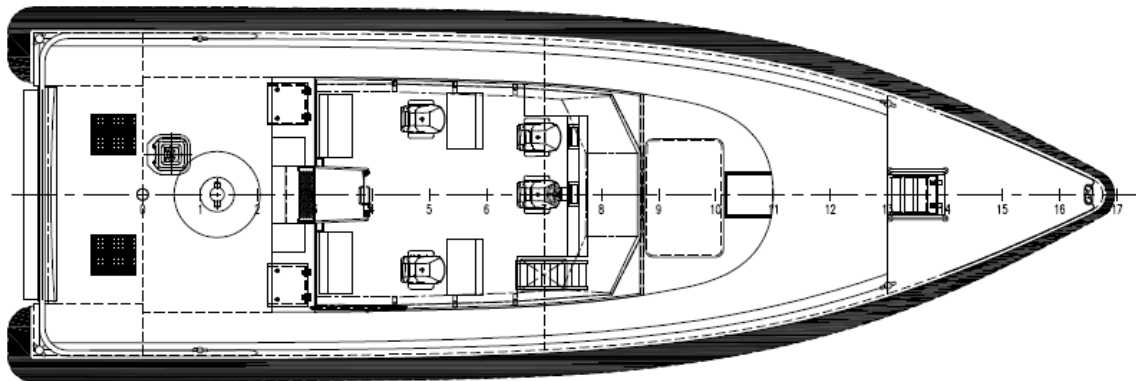
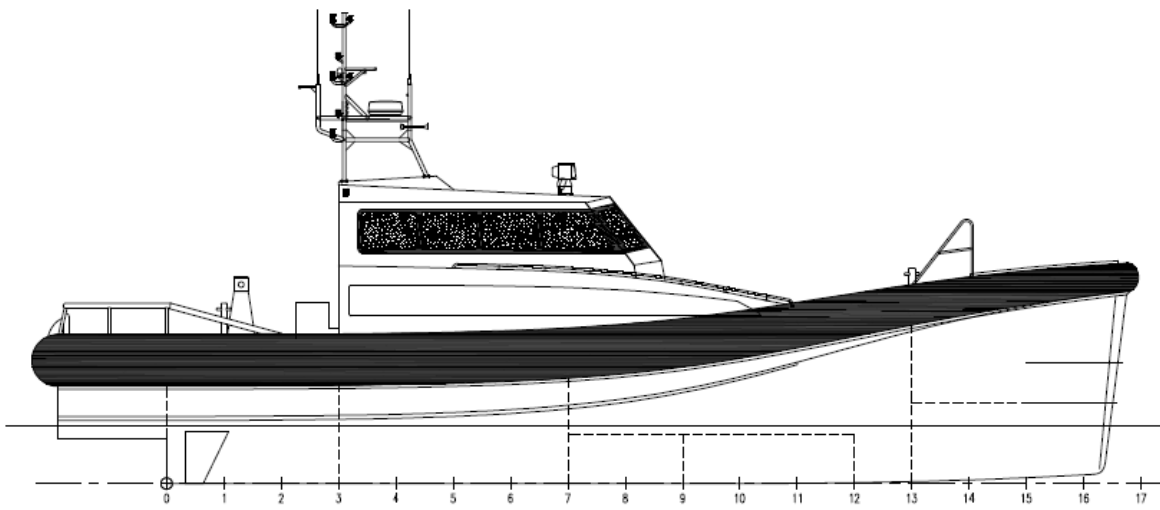
| | |
|-----------------|---|
| BELOW MAIN DECK | Large technical space, two bunks, sanitary space and pantry |
| WHEELHOUSE | 4x Norsap seats, dashboard, desks and bunks |
| SEATS | Ullman Biscaya jockey seats |

NAUTICAL, SURVEILLANCE AND COMMUNICATION EQUIPMENT

| | |
|------------------|---|
| SEARCHLIGHTS | Remote controlled |
| NAVIGATION SYTEM | Raymarine C120 series with radar, gps, chart plotter, echo sounder and two displays |
| COMMUNICATION | GMDSS A1 |

OPTIONALS

| | |
|---------------|---|
| FLYING BRIDGE | Half height platforms behind wheelhouse |
| WINDOWS | Electrical heated front windows |
| WINDOWS | Extra strong 3 layered front windows |
| PROPULSION | Delayed stop of engines during roll-over (30 sec), to keep engines running during roll-over |
| FUEL SYSTEMS | Separate systems for each engine |
| COMFORT | AC system with hydraulic powered compressor |
| TOWING LINES | 1x220m, 1x110 32mm Tipto Twelve R-2 |
| SALVAGE PUMPS | 2x 60 m ³ /h Hatz pump |
| NAVIGATION | Second radar |
| | Thermal imager |
| | Colorlight 2x 250W searchlight |
| COMMUNICATION | GMDSS A2 |



DAMEN SEARCH AND RESCUE 1906

SELF-RIGHTING & ALL WEATHER

DAMEN

DAMEN SHIPYARDS GORINCHEM

Member of the DAMEN SHIPYARDS GROUP



Industrieterrein Avelingen West 20
4202 MS Gorinchem

P.O. Box 1
4200 AA Gorinchem
The Netherlands

phone +31 (0)183 63 99 11
fax +31 (0)183 63 21 89

info@damen.nl
www.damen.nl