



FAST CREW SUPPLIER 3307

STANDARD

GENERAL

Hull material Aluminium
 superstructure Aluminium
 Basic functions Crew and cargo duties
 Classification Bureau Veritas

I * Hull • MACH
 Crew Boat
 Sea Area 3

DIMENSIONS

Length overall 34.2 m
 Beam overall 7.3 m
 Depth at sides 3.3 m
 Draught 2.5 m
 Cargo deck area 75.0 m²
 Deck load 2.5 t/m²
 Crew Up to 6 persons
 (Industrial) personnel Up to 75 persons

TANK CAPACITIES

Fuel oil 36.4 m³
 Fresh water 2.5 m³
 Sewage 2.4 m³
 Bilge water/ dirty oil 1.2 m³
 Liquid cargo 41.5 m³

PERFORMANCES

Speed UP to 28.0 kn
 Range at max speed 1000 nm

PROPULSION SYSTEM

Main engines 3x Caterpillar / MTU
 Total Power Up to 3250 bkW
 Gearboxes 3x Reintjes WVS series
 Propulsion 3x Fixed pitch propellers
 Bow thruster 1x 75 kW, Hydraulic

ELECTRICAL EQUIPMENT

Network 24V d.c. 230V/400V, 50 Hz
 Generator sets 2x 51.5 ekW – 64.5 kVA

DECK LAY-OUT

Anchor equipment 1x HHP Pool TW, 105 kg
 Fendering Aluminium fender on deck level, heavy duty rubber fender transom corners and tyre fender along side

SHIP SYSTEMS

General service pumps Electrically driven
 Engine room ventilation 38.000 m³/hr
 Fuel separator 1x non-self cleaning
 Fire extinguishing Hand operated fire extinguishers, Fixed fire-fighting system in engine room (Aerosol)

ACCOMMODATION

Below main deck Mess, pantry, cabins, sanitary space
 Main deck Industrial personnel area, sanitary spaces
 Air-conditioning Up to 130.000 BTU/hr

NAUTICAL AND COMMUNICATION EQUIPMENT

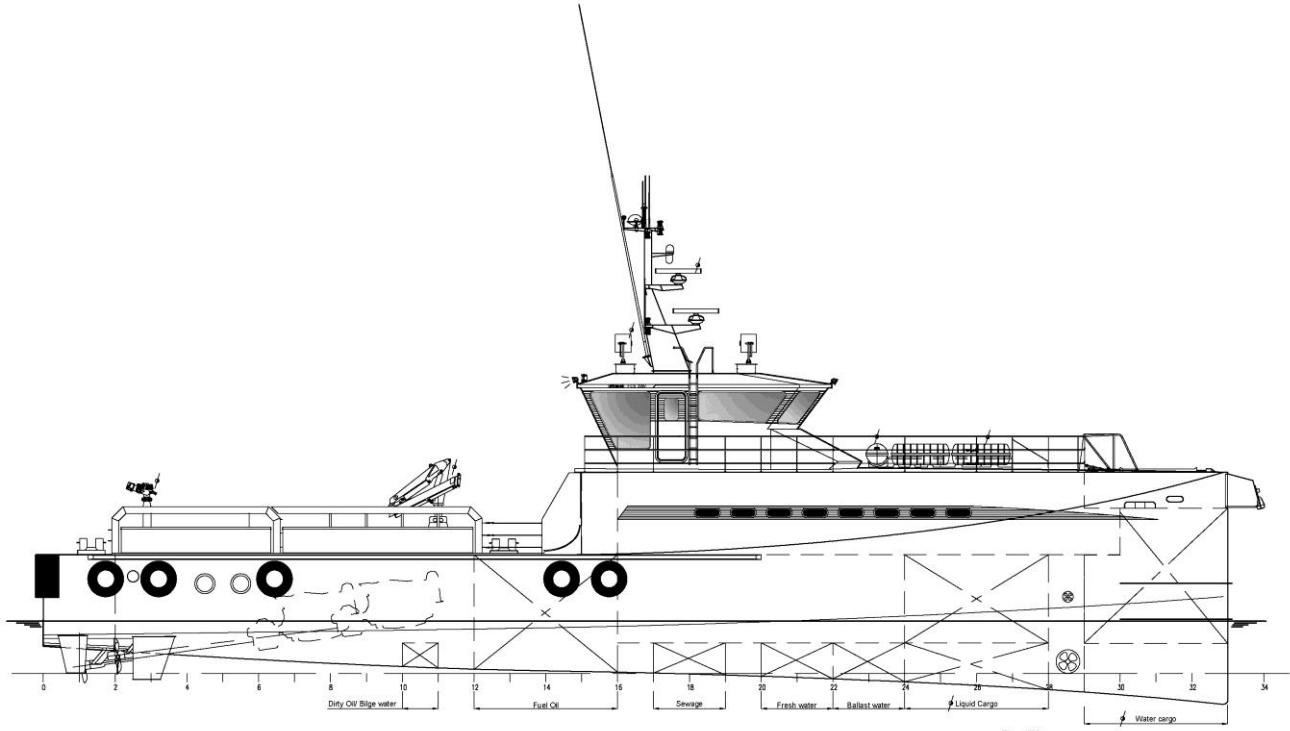
Searchlight 1x
 Radar 1x X-band
 Chart plotter 1x
 GPS 1x
 AIS 1x
 Compass 1x Magnetic, 1x GPS
 Autopilot 1x
 Echo sounder 1x
 Internal communication Intercom, loudhailer
 External communication GMDSS A2
 Weather system 1x

OPTIONAL

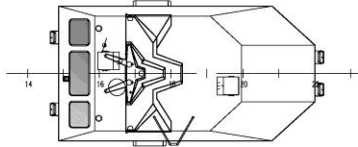
Aft. Steering position
 Bilge water separator
 Fuel separator 1x self cleaning
 Flow indicator
 Fresh water maker
 Sewage treatment plant
 Heating system
 Foldable deck crane
 Fresh water cargo pump 30 m³/hr at 5.5 bar
 Fuel cargo pump 30 m³/hr at 5.5 bar
 External fi-fi system 180 m³/hr
 Second searchlight
 Second Radar
 DGPS
 Night vision camera
 CCTV system
 External communications GMDSS A3
 Fleetbroadband / V-SAT
 Wi-fi system

FAST CREW SUPPLIER 3307

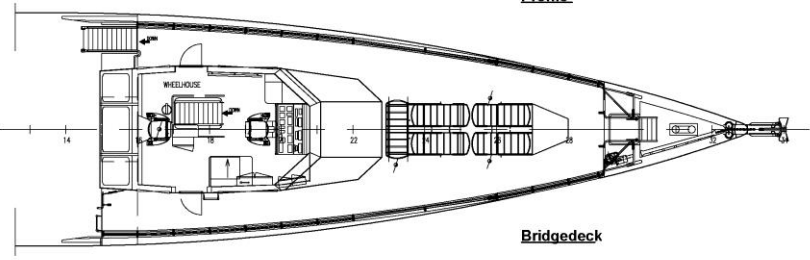
STANDARD



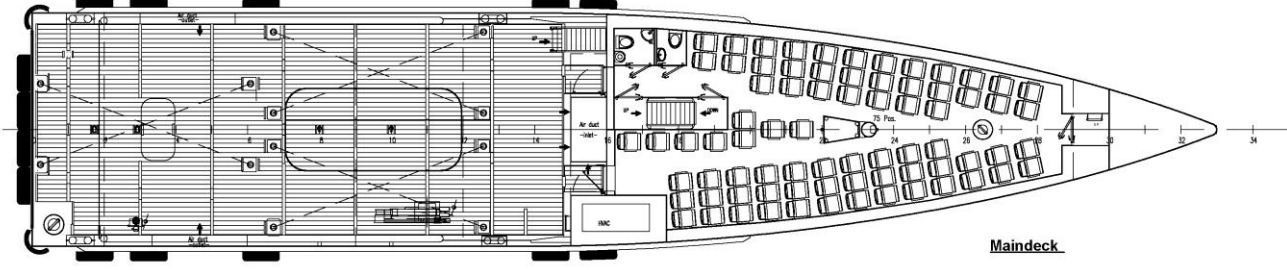
Profile



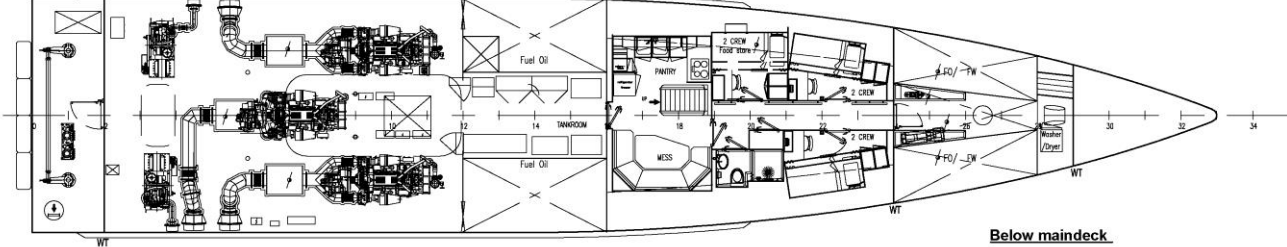
Top of wheelhouse



Bridgedeck



Maindeck



Below maindeck



Items marked with are optional equipment

DAMEN SHIPYARDS GROUP

Avelingen-West 20
4202 MS Gorinchem
The Netherlands

P.O. Box 1
4200 AA Gorinchem
The Netherlands

phone +31 (0)183 63 99 22
fax +31 (0)183 63 21 89

info@damen.com
www.damen.com

© No part of the leaflet may be reproduced in any form, by print, photo print, microfilm, or any other means, without written permission from Damen Shipyards Group