



# FAST CREW SUPPLIER 1605

## STANDARD

### GENERAL

Hull material	Aluminium
Superstructure	FRP
Basic functions	Crew and cargo duties

### DIMENSIONS

Length overall	16.5 m
Beam overall	5.4 m
Depth at side	1.8 m
Draught max	0.8 m
Crew	1
(industrial) personnel	Up to 29 persons

### TANK CAPACITIES

Fuel oil	2.0 m <sup>3</sup>
Fresh water	0.2 m <sup>3</sup>
Waste water	0.1 m <sup>3</sup>
Deck cargo	2.0 t/m <sup>2</sup>

### PERFORMANCES

Speed	Up to 27.5 kn
Range at max speed	210 nm

### PROPULSION SYSTEM

Main engines	2x Caterpillar C18 TA
Total Power	Up to 1100 bkW
Gearboxes	2x Twin Disc HPTO
Propulsion	2x Rolls Royce FF375S, waterjets

### ELECTRICAL EQUIPMENT

Network	24V dc, 230V/400V, 50 Hz a.c.
---------	-------------------------------

### DECK LAY-OUT

Anchor equipment	1x 24 kg Pool TW chain and line
Fendering	Foam fender
Bowfender	Foam filled

### SHIP SYSTEMS

General service pump	1x manually driven
Engine room ventilation	70.000 m <sup>3</sup> /hr
Fire extinguishing	Hand operated fire extinguishers. Fixed fire-fighting system in engine room (Aerosol)

### ACCOMMODATION

Below main deck	Seats and toilet
Main deck	Seats for industrial personnel and helmsman seat
Air conditioning	Up to 40.500 BTU/hr

### NAUTICAL AND COMMUNICATION EQUIPMENT

Searchlight	1x
Radar	1x
GPS	1x
Compass	1x Magnetic
Echo sounder	1x
Internal communication	Loudhailer
VHF	1x

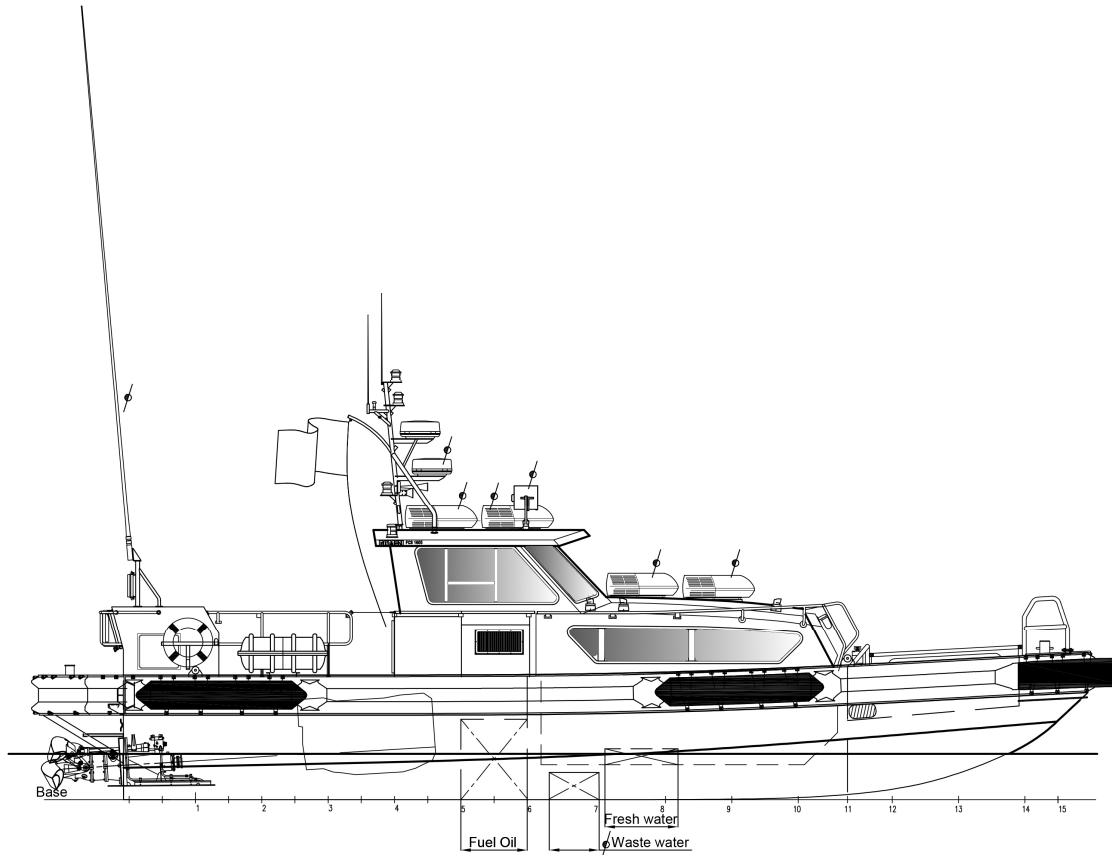
### OPTIONAL

Classification	Bureau Veritas I ✕ Hull •MACH Light Ship / Fast Utility Vessel / Crew boat Sea Area 2
----------------	--

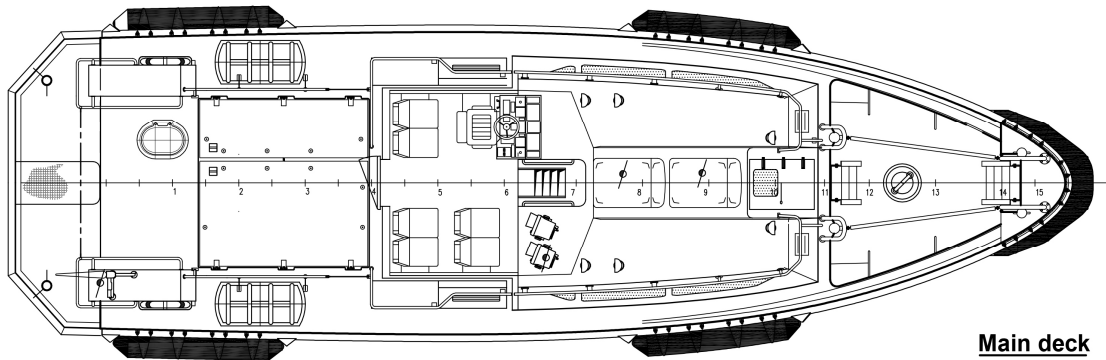
Electrically driven bilge pump	
Generator sets	1x 11.0 ekW - 13.5 kVA
Settee/ pantry	
Sanitary spaces	
Second radar	
AIS	
External communication	GMDSS A1/A2

# FAST CREW SUPPLIER 1605

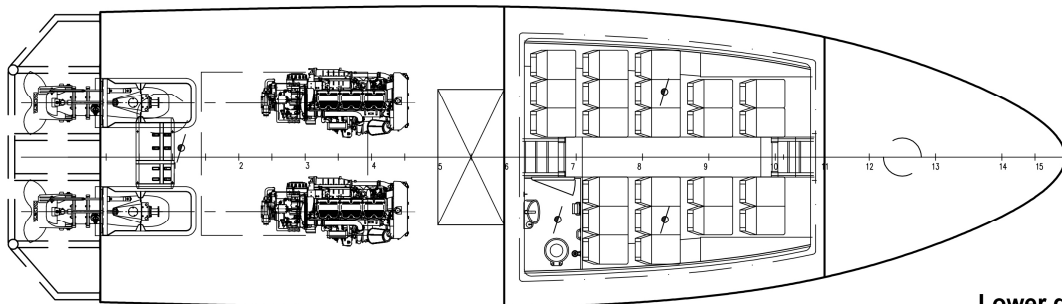
STANDARD



**Profile**



**Main deck**



**Lower deck**

**Total passenger capacity : 29**

**DAMEN**

Items marked with  $\phi$  are optional equipment

DAMEN SHIPYARDS GROUP

Avelingen-West 20  
4202 MS Gorinchem  
The Netherlands

P.O. Box 1  
4200 AA Gorinchem  
The Netherlands

phone +31 (0)183 63 99 22  
fax +31 (0)183 63 21 89

info@damen.com  
[www.damen.com](http://www.damen.com)

© No part of the leaflet may be reproduced in any form, by print, photo print, microfilm, or any other means, without written permission from Damen Shipyards Group

November 2017