



# FAST CREW SUPPLIER 1605 FRP

## STANDARD

### GENERAL

Hull material	FRP
Superstructure	FRP
Basic functions	Crew and cargo duties

### DIMENSIONS

Length overall	16.0 m
Beam overall	4.8 m
Depth at side	2.0 m
Draught max	0.8 m
Deck cargo	2.0 t/m <sup>2</sup>
Crew	1
(industrial) personnel	Up to 30 persons

### TANK CAPACITIES

Fuel oil	1.7 m <sup>3</sup>
Fresh water	0.3 m <sup>3</sup>
Sewage	0.3 m <sup>3</sup>

### PERFORMANCES

Speed	Up to 29.0 kn
Range at max speed	210 nm

### PROPULSION SYSTEM

Main engines	2x Volvo D13-MH
Total Power	Up to 882 bkW
Gearboxes	2x ZF 360
Propulsion	2x Rolls Royce FF37

### ELECTRICAL EQUIPMENT

Network	24 V dc, 230V,50 Hz a.c.
Generator sets	1x 9.5 ekW - 9.5 kVA

### DECK LAY-OUT

Anchor equipment	1x Fortress, chain and line
Fendering	D-fender 190x200 all around
Bowfender	Foam filled

### SHIP SYSTEMS

General service pump	1x electrically driven
Engine room ventilation	5.300 m <sup>3</sup> /hr
Fire extinguishing	Hand operated fire extinguishers. Fixed fire-fighting system in engine room

### ACCOMMODATION

Helmsman seat	
Main deck	Seats for industrial personnel
Air conditioning	Up to 40.500 BTU/hr

### NAUTICAL AND COMMUNICATION EQUIPMENT

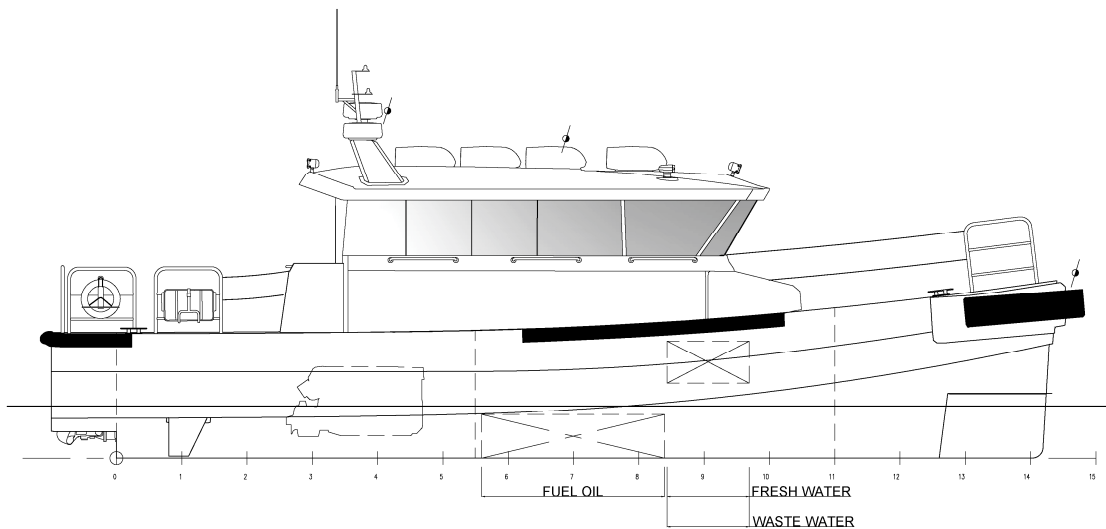
Searchlight	1x
Radar	1x
Chart plotter	1x
GPS	1x
AIS	1x
Compass	1x Magnetic
Echo sounder	1x
VHF	1x

### OPTIONAL

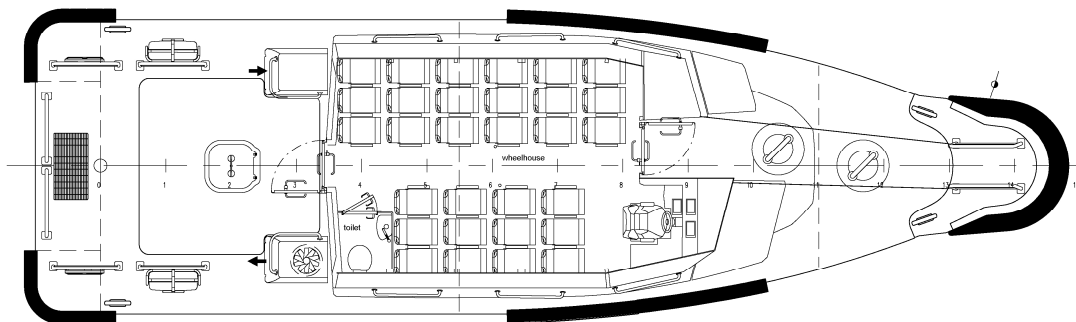
Classification	Bureau Veritas I ✕ Hull • MACH Crew boat Sea Area 3
External communication	GMDSS A1
Navigator seat	
Second radar	
Navtex	
EPIRB	
SART	

# FAST CREW SUPPLIER 1605 FRP

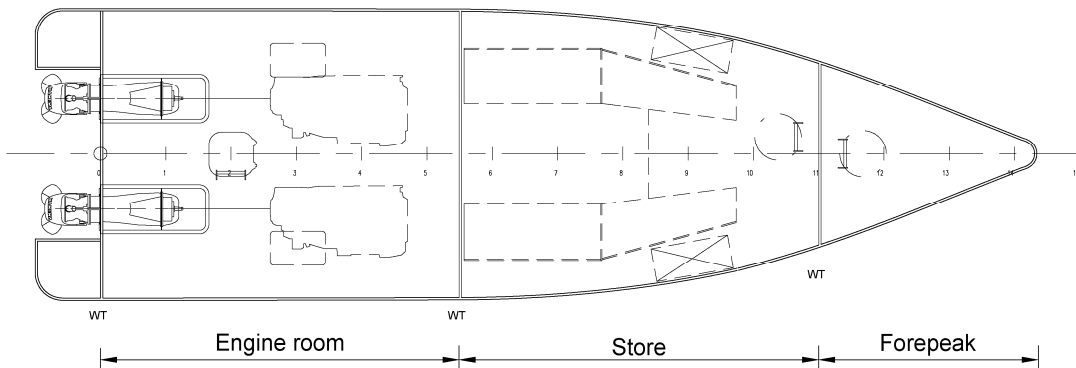
## STANDARD



Profile



Main deck



Lower deck



Items marked with  are optional equipment

DAMEN SHIPYARDS GROUP

Avelingen-West 20  
4202 MS Gorinchem  
The Netherlands

P.O. Box 1  
4200 AA Gorinchem  
The Netherlands

phone +31 (0)183 63 99 22  
fax +31 (0)183 63 21 89

[info@damen.com](mailto:info@damen.com)  
[www.damen.com](http://www.damen.com)