



DAMEN FAST CREW SUPPLIER[®] 1204

"FCS 1204"

GENERAL

HULL MATERIAL
SUPERSTRUCTURE
BASIC FUNCTIONS
CLASSIFICATION

Aluminium
FRP
Crew and Pilot duties
Bureau Veritas
1 * Hull • MACH
Light Ship/Fast Utility Vessel
Sea Area 2

DIMENSIONS

LENGTH O.A. 12.56 m
BEAM O.A. 3.85 m
DEPTH AT SIDES 1.67 m
DRAUGHT MAX 0.80 m

CAPACITIES

FUEL OIL 0.87 m³
FRESH WATER 0.08 m³
SEWAGE 0.03 m³
MAX. DECK LOAD 0.50 t
CREW 2 persons
INDUSTRIAL PERSONNEL Up to 12 persons

PERFORMANCES

SPEED 25 knots
RANGE 150 nm. at max. speed

PROPULSION SYSTEM

MAIN ENGINES 2x Caterpillar C7
TOTAL POWER 470 bkW
GEARBOXES ZF 286
PROPULSION 2x Ultrajet 340

ELECTRICAL EQUIPMENT

NETWORK 24V d.c.; 230V 50 Hz
GENERATOR SETS 1x Onan 4.0 MDKBM
1x 4.0 kW, 5.0 kVA

DECK LAY-OUT

ANCHOR EQUIPMENT 1x 20 kg HHP with chain and line
FENDERING 230 mm x 115 mm D-shaped foam filled fender

LIFE SAVING EQUIPMENT

LIFE BUOYS 2
LIFE JACKETS Based on number of persons on board
LIFE RAFTS 1x 16 persons
FIRE EXTINGUISHING Hand operated fire extinguishers. Fixed Fi-Fi system in engine room (Novac 1230)

AUXILIARY EQUIPMENT

ENGINE ROOM VENTILATION 2x 1500 m³/h
GENERAL SERVICE PUMPS Electrically driven, 24V, Azcue CA 40
CATHODIC PROTECTION

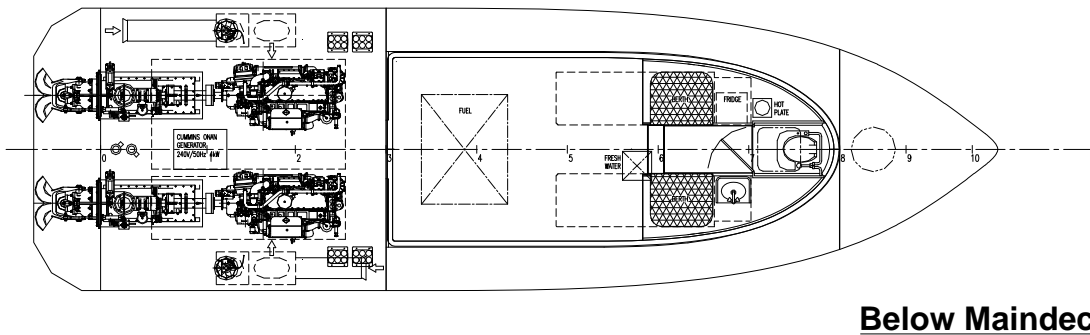
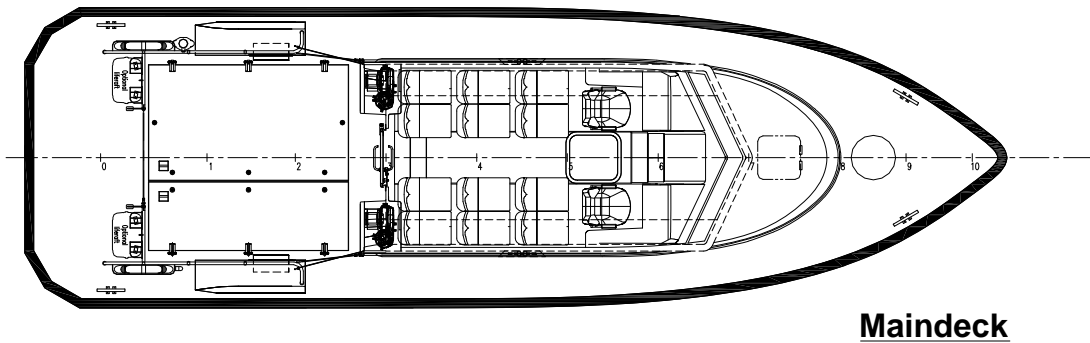
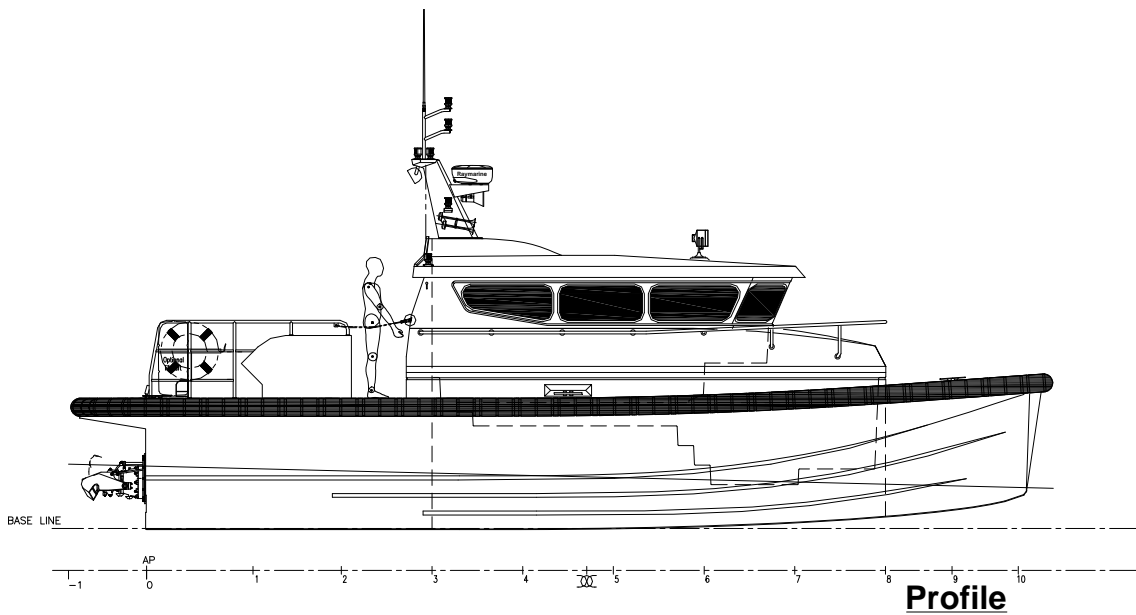
ACCOMODATION

BELOW MAIN DECK Pantry, toilet & 2 bunks
MAIN DECK 12 Seats
AIR-CONDITIONING 24,000 BTU

NAUTICAL, SURVEILLANCE AND COMMUNICATION EQUIPMENT

SEARCHLIGHT 1x 250W 24V
COMPASS Magnetic
ECHO SOUNDER
RADAR
GPS/
AIS
VHF
VHF HANDHELD
NAVTEX

NOTE: SOME ITEMS IN THIS SPECIFICATION ARE OPTIONAL. SPECIFICATION AND GENERAL ARRANGEMENT CAN BE CHANGED WITHOUT NOTICE.



DAMEN FAST CREW SUPPLIER[®] 1204

"FCS 1204"

DAMEN

DAMEN SHIPYARDS GORINCHEM

Member of the DAMEN SHIPYARDS GROUP



Industrieterrein Avelingen West 20
4202 MS Gorinchem

P.O. Box 1
4200 AA Gorinchem
The Netherlands

phone +31 (0)183 63 99 11
fax +31 (0)183 63 21 89

info@damen.nl
www.damen.nl