



## DAMEN COMBI COASTER 2750 STANDARD

### GENERAL

Basic functions	Transport of bulk, steel coils, containers, forest products, general cargo etc.
Classification	Bureau Veritas I ✳ Hull ✳ Mach General Cargo Ship Unrestricted Navigation AUT-UMS, Strength bottom (bottom strengthened for loading aground) Tanktop locally suitable for 117 kN/m <sup>2</sup> (12 ton/m <sup>2</sup> )

### DIMENSIONS

Length o.a.	88,63	m
Length b.p.p.	84,99	m
Beam mld.	11,30	m
Depth to main deck at side	5,40	m
Draught ballast	2,80	m
Air draught from base	12,50	m
Draught design	4,35	m
Deadweight at draught 4,35 m	2.750	t
Deadweight at draught 3,40 m	1.800	t

### TONNAGE MEASUREMENT

London-Convention 1969	1.800	GT
------------------------	-------	----

### CAPACITIES

Hold	3.700	m <sup>3</sup> (131,000 cuft)
Ballast water	1.300	m <sup>3</sup>
Fuel oil (at least)	116	m <sup>3</sup>
Fresh water (approx.)	28	m <sup>3</sup>
Sludge	2,2	m <sup>3</sup>
Sewage	6	m <sup>3</sup>
Lubrication oil	2 x 3	m <sup>3</sup>

Container capacity	54	TEU
--------------------	----	-----

### PERFORMANCES (APPROX.)

Speed (at d = 2,80 m and 100% MCR)	10,8	kn
------------------------------------	------	----

### PROPULSION

1 ABC diesel engine, type 6MDZC, output 1104 kW at 800 rpm, running on MDO  
Fixed pitch propeller, 2000 mm in nozzle  
Bow thruster, FPP, 267 kW, diesel driven, 4 outlet channels

### AUXILIARY

Networks	2 Generator sets, 137kVA - 50HZ 1 Emerg./ harbour generator set, 71 kVA – 50HZ
Starting air compressors	2 Starting air compressors
Non self-cleaning MGO filter separator	1 Non self-cleaning MGO filter separator
Non self-cleaning LO filter separator	1 Non self-cleaning LO filter separator
Fuel oil trim pump	1 Fuel oil trim pump
Bilge water separator	1 Bilge water separator
General service pumps	2 General service pumps
Firefighting pump	1 Firefighting pump
Freshwater pressure set	1 Freshwater pressure set
UV sterilizing set	1 UV sterilizing set
Sewage pump	1 Sewage pump
Central heating boiler, running on MGO	1 Central heating boiler, running on MGO
CO <sub>2</sub> firefighting system for engine room	1 CO <sub>2</sub> firefighting system for engine room
Steering gear unit	1 Steering gear unit

### DECK LAY-OUT AND EQUIPMENT

Hydraulic bow anchor winch with two warping heads	Hydraulic bow anchor winch with two warping heads
Hydraulic stern anchor winch with one warping head and wire rope drum	Hydraulic stern anchor winch with one warping head and wire rope drum
Rudder, fishtail type	Rudder, fishtail type
Lashing eyes in hold and outside of coaming	Lashing eyes in hold and outside of coaming
Grain bulkheads (2 pcs) with 13 stowage positions	Grain bulkheads (2 pcs) with 13 stowage positions
Electrically driven hold ventilation for 6 changes per hour	Electrically driven hold ventilation for 6 changes per hour
Loose gangway	Loose gangway
Rescue boat FRC with crane on SB	1 Rescue boat FRC with crane on SB
Life rafts	2 Life rafts

### HATCHES

Weather deck hatches, steel pontoon type, with gantry crane

### ACCOMMODATION

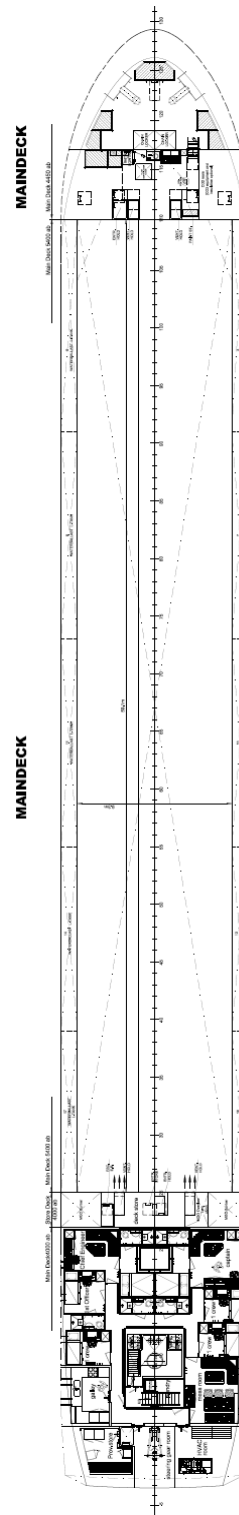
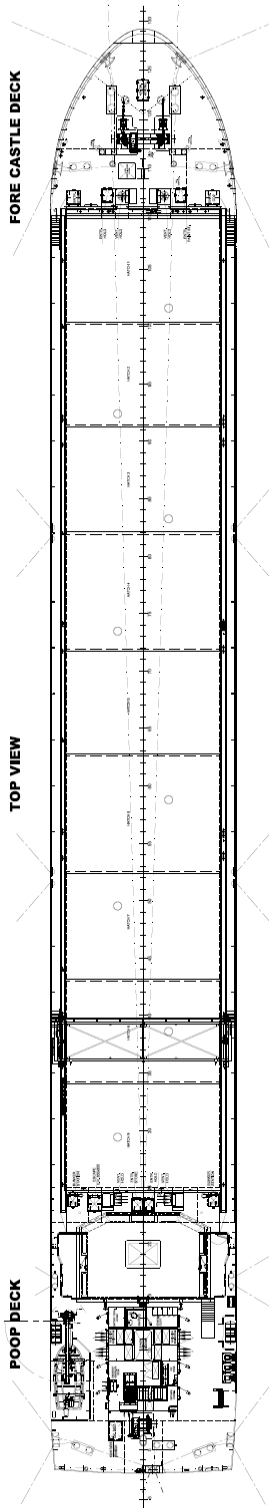
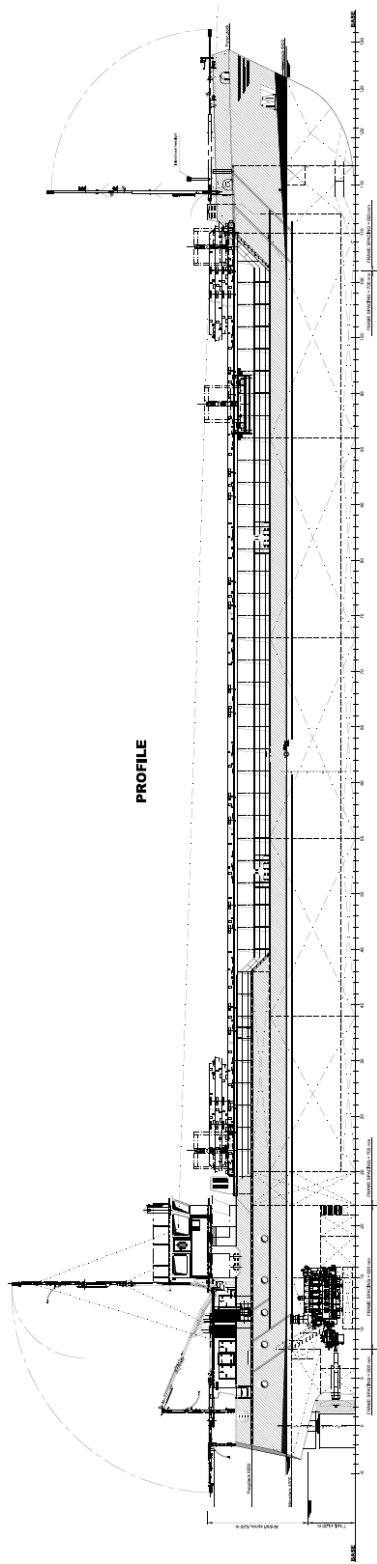
For captain and crew for a total of 6 (+2) persons with heating, ventilation and air-conditioning.

### NAUTICAL AND COMMUNICATION EQUIPMENT

Radio telephone set according to GMDSS for area A3

### OPTIONS

Fixed wheelhouse  
Dangerous cargo  
Dangerous cargo explosives  
SCR  
Ballast Water Treatment  
ECDIS  
Cooling water aux engines connected to aft peak  
Loading computer  
FC driven PTO



# DAMEN COMBI COASTER 2750

## STANDARD

**DAMEN**

DAMEN SHIPYARDS GORINCHEM

Member of the DAMEN SHIPYARDS GROUP



Industrieterrein Avelingen West 20  
4202 MS Gorinchem

P.O. Box 1  
4200 AA Gorinchem  
The Netherlands

phone  
fax

+31 (0)183 63 99 11  
+31 (0)183 63 21 89

info@damen.com  
www.damen.com